

UP18 R

LEGS ARE DEAD HANGING FROM GRID

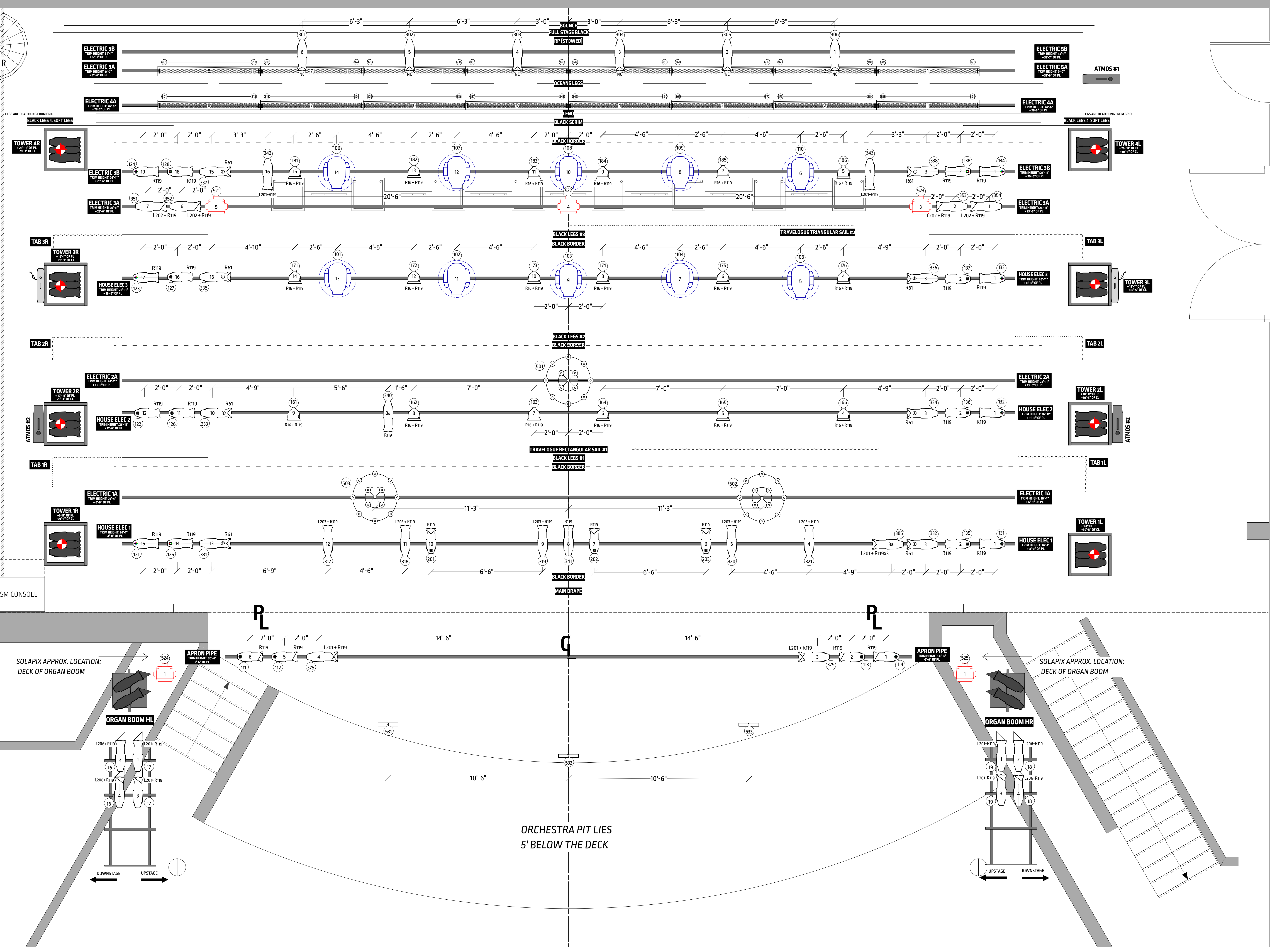
SAFETY LINE

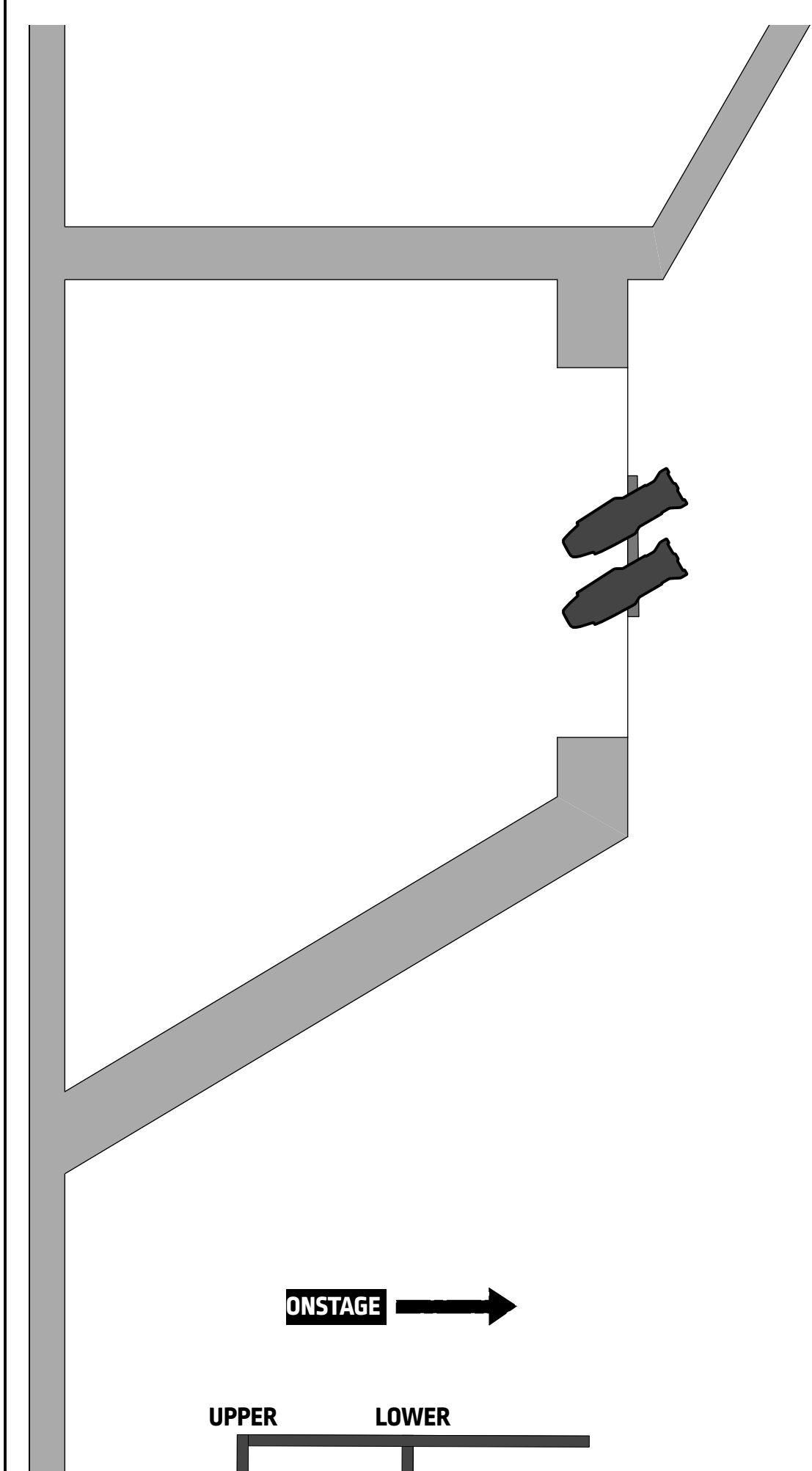
E 34'-0"	ROAD LINE SET	43
E 34'-0"	BOUNCE	42
E 33'-0"	FULL STAGE BLACK	41
E 33'-3"	RP (STOWED)	40
E 32'-0"	ELECTRIC 5B WILD	39
E 32'-2"	ELECTRIC 5A	38
E 31'-0"	ELECTRIC 5A (GROUND ROW) WILD	37
E 30'-0"	OCEANS LEGS WILD	36
E 30'-0"	ELECTRIC 5	35
E 29'-0"	ELECTRIC 4A	34
E 29'-0"	LENO WILD	33
E 28'-0"	BLACK SCRIM WILD	32
E 27'-0"	HOUSE ELECTRIC 4 (BLACK BORDER)	31
E 26'-0"	SHELL NO. 4	30
E 25'-0"	ELECTRIC 3B	29
E 25'-0"	ELECTRIC 3A	28
E 24'-0"	ELECTRIC 3A WILD	27
E 23'-0"	TRAVELQUE TRIANG SAIL #2 WILD	26
E 22'-0"	BLACK LEGS 3	25
E 21'-0"	12" BLACK BORDER 4	24
E 20'-0"	SHELL NO. 3	23
E 19'-0"	HOUSE ELECTRIC 3	22
E 18'-0"	ELECTRIC 2A	21
E 18'-0"	ELECTRIC 2B	20
E 17'-0"	BLACK LEGS 2	19
A 16'-0"	BLACK BORDER 3 (BOC)	18
E 15'-0"	BLACK LEGS 1	17
E 14'-0"	12" BLACK BORDER 2	16
E 14'-0"	ELECTRIC 2A (CHANDELIER II) WILD	15
E 13'-0"	SHELL NO. 2	14
E 11'-0"	HOUSE ELECTRIC 2	13
E 10'-0"	ELECTRIC 1A	12
E 10'-0"	TRAVELQUE REC SAIL 1 WILD	11
E 9'-0"	BLACK LEGS 1	10
E 8'-0"	12" BLACK BORDER 1	9
E 8'-0"	ELECTRIC 1A (CHANDELIER II) WILD	8
E 7'-0"	SHELL 1	7
E 4'-0"	SHELL 1	6
E 4'-0"	HOUSE ELECTRIC 1	5
E 3'-0"	HOUSE ELECTRIC 1	4
E 2'-0"	20" BLACK BORDER 1	3
E 1'-0"	MAIN DRAPE WILD	2
E 1'-0"	SM CONSOLE	1

ELECTRIC Trim heights measured from house deck to 30' legs.

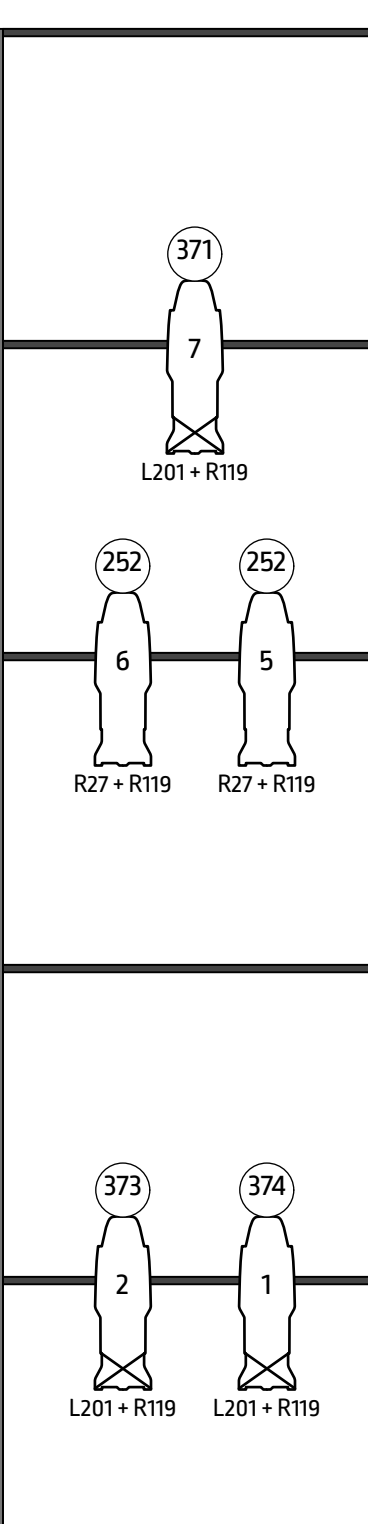
SCENERY Trim heights measured from house deck to bottom of piece.

Denotes electric winch batten.

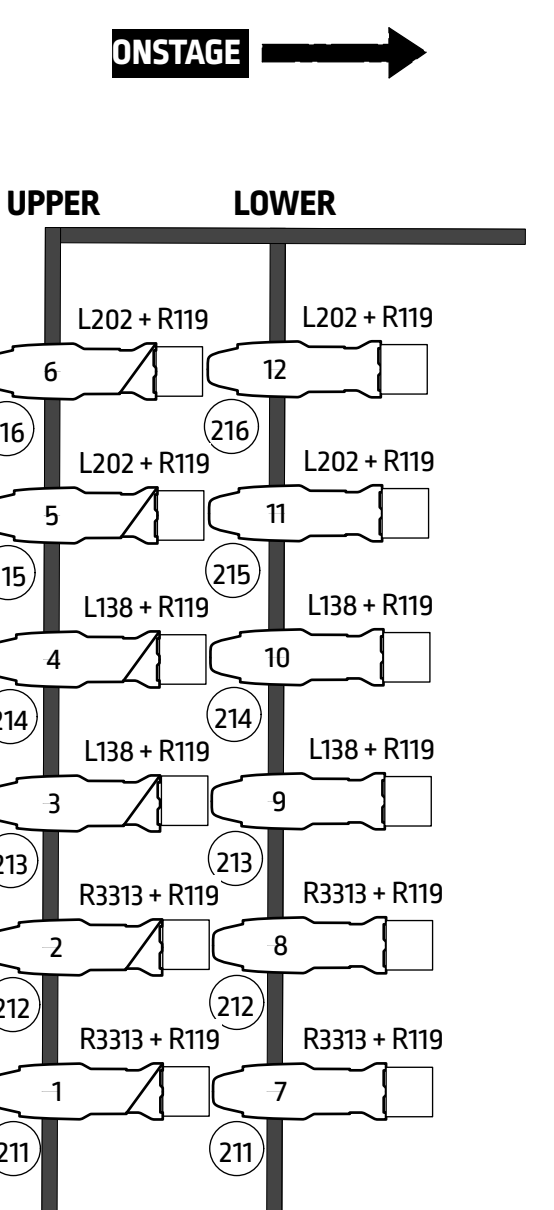
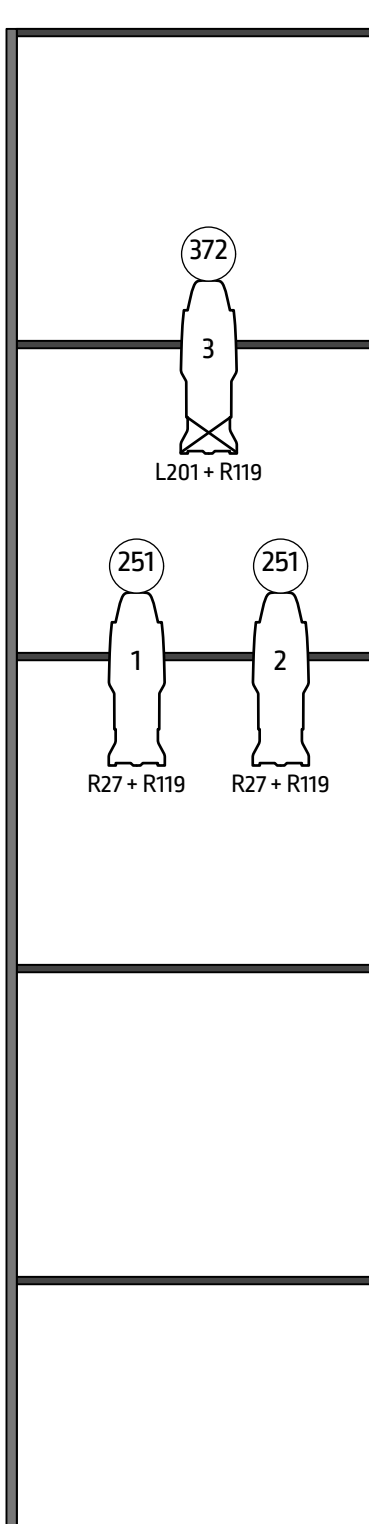




HL BOX BOOM

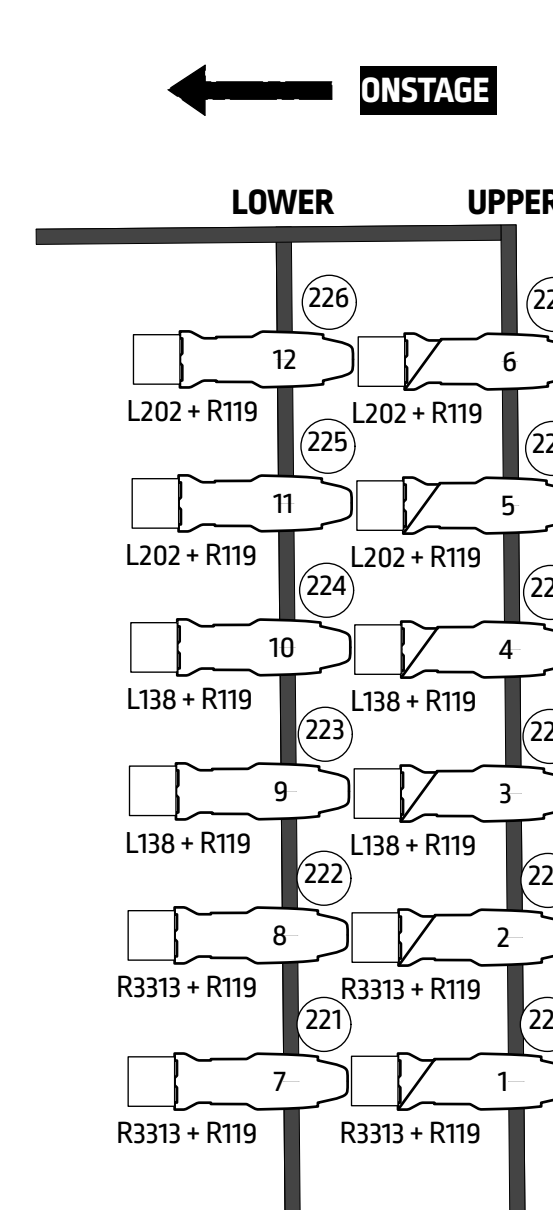


HR BOX BOOM



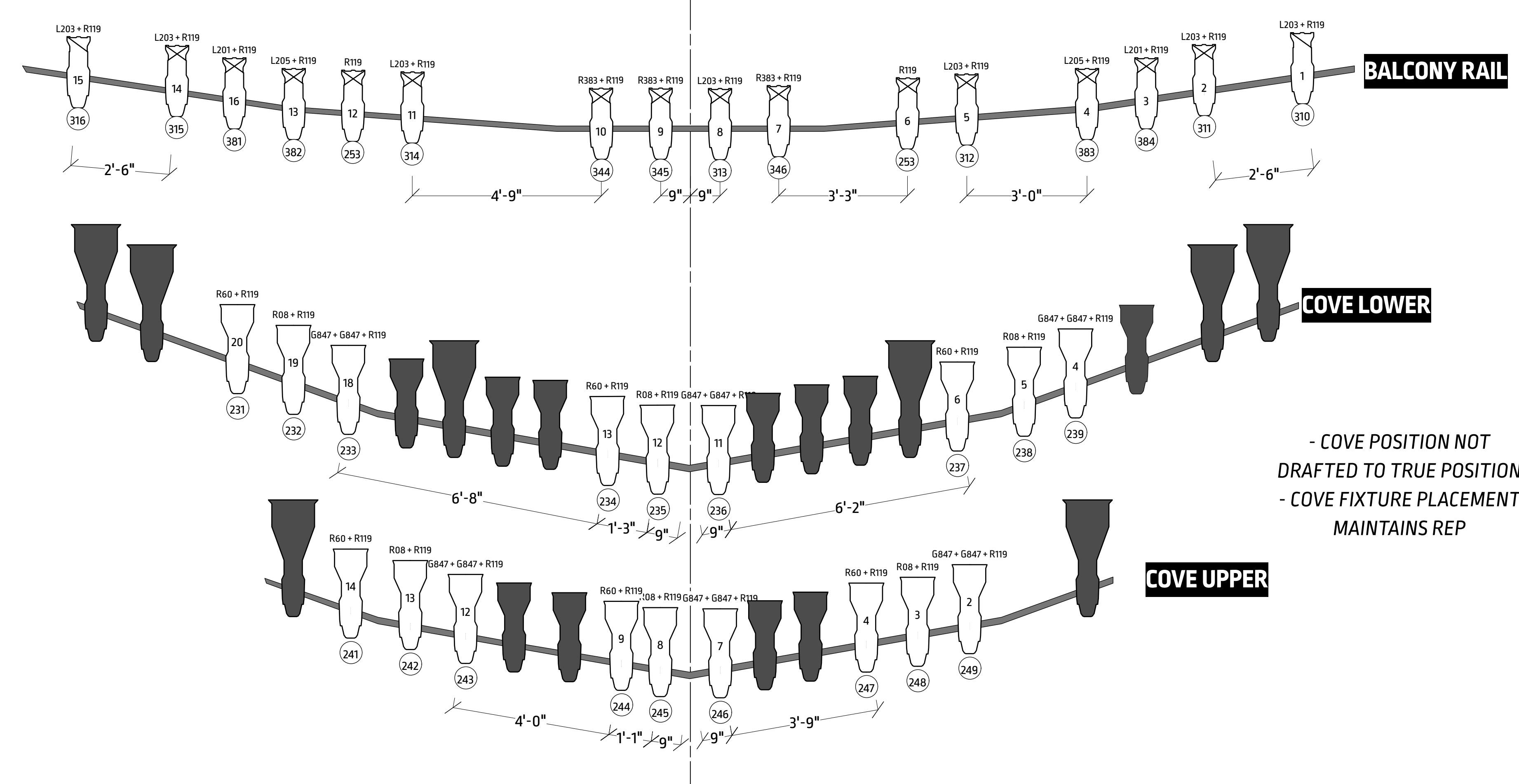
HL GALLERY

- HL GALLERY FIXTURE
PLACEMENT MAINTAINS REP
- FIXTURE DIMENSION 1'6" FROM
EDGE OF PIPE



HR GALLERY

- HR GALLERY FIXTURE
PLACEMENT MAINTAINS REP
- FIXTURE DIMENSION 1'6" FROM
EDGE OF PIPE



BALCONY RAIL

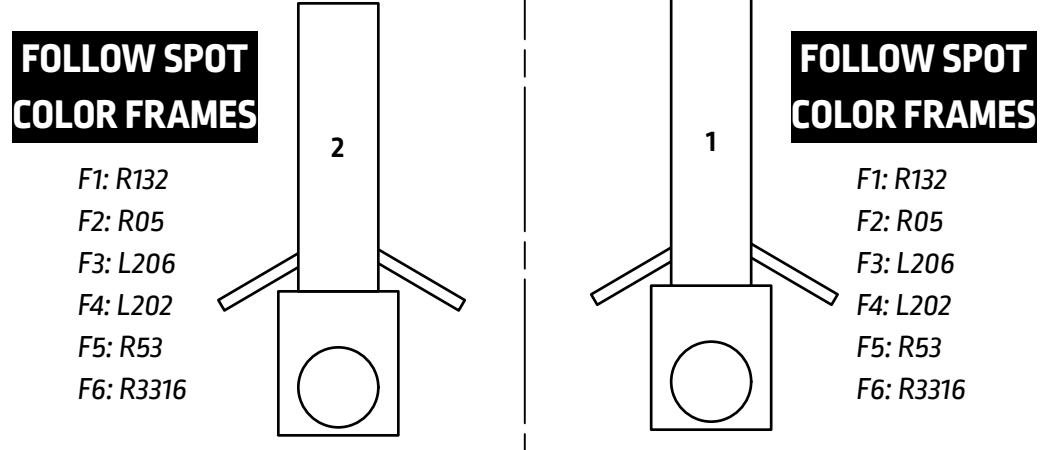
COVE LOWER

- COVE POSITION NOT
DRAFTED TO TRUE POSITION
- COVE FIXTURE PLACEMENT
MAINTAINS REP

COVE UPPER

FOLLOW SPOT BOOTH

- FOLLOW SPOT BOOTH
NOT DRAFTED TO SCALE



KEY

- ETC SOURCE4 100EG @ 575w
- ETC SOURCE4 190EG @ 575w
- ETC SOURCE4 260EG @ 575w
- ETC SOURCE4 360EG @ 575w
- ETC SOURCE4 500EG @ 575w
- ETC S4 LUSTR II 26 @ 167w (Direct)
- ETC S4 LUSTR II 36 @ 167w (Direct)
- ETC S4 LUSTR II 50 @ 167w (Direct)
- ETC S4 PAR MFL @ 575w
- CHROMAQ COLORBLAST TR @ 50w
- High End Systems SOLAPIX 19 @ 1000w
- AVRION GHBLI @ 800w (EXTREME MODE)
- CHROMAQ COLORFORCE 172 @ 800w (CYC LENS [2CH X RGBA])
- LYCIAN 1295 ELT @ 1.2 kw
- MDG ATMe @ 775w
- FAN

LEGEND

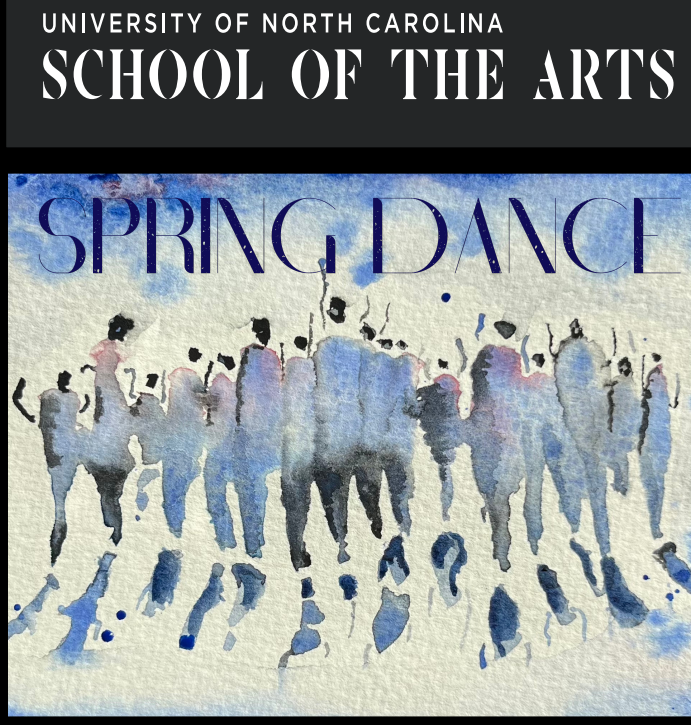
- COLOR EXTENDER
- BEAM BENDER
- BARNDÖÖR
- HALF HAT
- MOTOR POINT
- COLOR
- TEMPLATE
- UII
- CH

NOTES

- ALL TRIMS ARE FROM BOTTOM OF PIPE TO STAGE DECK OR TOWER
- DANCE TOWER PLACEMENT MEASURED FROM CENTER OF TOWER
- REFER TO LW FOR COLOR, TEMPLATE AND PURPOSE
- PLEASE ACCOUNT FOR 10% OF SPARES
- ML SCREENS FACE UPSTAGE
- ALL C7 725 REQUIRE CYC LENSES
- NO SUBSTITUTIONS WITHOUT DESIGNER APPROVAL
- PLEASE PROVIDE SPARE BLACKTAK, BLACKWRAP, R119
- DROP COLOR - TEMPLATES PRIOR TO FOCUS

REVISIONS

REV. #	DATE	DESCRIPTION
A	02/16/2023	Rough Plot
B	03/02/2023	Final Plot Rev B
C	03/02/2023	Chamfering - P16
D	03/02/2023	Final plot changes
E	03/02/2023	OCEANS Revisions
F	03/12/2023	DT-LEGS
G	04/02/2023	FOH Frost Additions
H	04/16/2023	As Built



LIGHTING DESIGNERS

Sage Green (760) 822-4063
Dominick Z. Riches (818) 877-0337

green.sm@artists.uncsa.edu riches.d@artist.uncsa.edu

THIS DRAWING REPRESENTS VISUAL AND CONSTRUCTION SUGGESTIONS ONLY. IT DOES NOT REPLACE THE KNOWLEDGE AND ADVICE OF A LICENSED STRUCTURAL ENGINEER. THE DESIGNER IS UNQUALIFIED TO DETERMINE THE STRUCTURAL OR ELECTRICAL APPROPRIATENESS OF THIS DESIGN AND WILL NOT ASSUME RESPONSIBILITY FOR IMPROPER ENGINEERING, CONSTRUCTION, HANDLING, OR USE. ALL MATERIALS AND CONSTRUCTION MUST COMPLY WITH THE MOST STRINGENT FEDERAL AND LOCAL FIRE, SAFETY, ENERGY AND ENVIRONMENTAL CODES.

THE STEVENS CENTER
Joan Hanes Theatre
405 4th Street NW
Winston-Salem NC 27101

Choreographers

Mere Cunningham, Eriban Outlaw, Ashley Lindsey, Tom Gold

PRODUCTION TEAM

LD: Sage Green + Dominick Z. Riches
Oceans Lighting Director: Eli Thomas
Assoc. LD: Lauren Lee
Asst. LD: Chris Mendell
PE: Evie Nootenboom
ET: Julian Cordova
Programmer: Garrett Deutsch
Production Manager: Cameron Russell
PSM: Sydney Knowland

FRONT OF HOUSE

DRAFTED BY: Sage Green + Dominick Z. Riches
Date: 04-15-2023
Scale: 1/2"=1'-0"
VW File Name: SPRANCE PLOT AS-BUILT.vwx

SHEET
2
OF 5

KEY

- ETC SOURCE4 1006G @ 575w
- ETC SOURCE4 1906G @ 575w
- ETC SOURCE4 2606G @ 575w
- ETC SOURCE4 3606G @ 575w
- ETC SOURCE4 5006G @ 575w
- ETC S4 Lustr II 26 @ 167w (Direct)
- ETC S4 Lustr II 36 @ 167w (Direct)
- ETC S4 Lustr II 50 @ 167w (Direct)
- ETC S4 PAR MFL @ 575w
- CHROMAQ COLORBLAST TR @ 50w
- High End Systems SOLAPX 19 @ 1000w
- AVRION GIBLI @ 800w (Extend Mod)
- CHROMAQ COLORFORCE 172 @ 800w (2CH X RGB)
- LYCIAN 1295 ELT @ 1.2 kw
- MDG ATMe @ 75w
- FAN

LEGEND

- COLOR EXTENDER
- BEAM BENDER
- BARNDÖÖR
- HALF HAT
- MOTOR POINT
- COLOR
- TEMPERATURE
- UB
- CH

NOTES

- ALL TRIMS ARE FROM BOTTOM OF PIPE TO STAGE DECK
- DANCE TOWER PLACEMENT MEASURED FROM CENTER OF TOWER
- REFER TO I/F FOR COLOR, TEMPLATE AND PURPOSE
- PLEASE ACCOUNT FOR 10% OF SPARES
- M SCREENS FACE UPSTAGE
- ALL CP 725 REQUIRE CYC LENSES
- NO SUBSTITUTIONS WITHOUT DESIGNER APPROVAL
- PLEASE PROVIDE SPARE BLACKTAK, BLACKWRAP, R19
- DROP COLOR = TEMPLATES PRIOR TO FOCUS

REVISIONS

REV. #	DATE	DESCRIPTION
A	02/16/2023	Rough Plot
B	03/02/2023	Final Plot Rev B
C	03/02/2023	Changeing R19
D	03/02/2023	Final plot changes
E	03/02/2023	OCEANS Revisions
F	03/02/2023	DT-LEGS
G	04/02/2023	FOH Frost Additions
H	04/02/2023	As Bults



LIGHTING DESIGNERS

Sage Green (760) 822-4063
 dominick.z.riches@uncc.edu

Dominick Z. Riches (818) 877-0337
 riches.d@artst.uncc.edu

THIS DRAWING REPRESENTS VISUAL AND CONSTRUCTION SUGGESTIONS ONLY. IT DOES NOT REPLACE THE KNOWLEDGE AND ADVICE OF A LICENSED STRUCTURAL ENGINEER. THE DESIGNER IS UNQUALIFIED TO DETERMINE THE STRUCTURAL OR ELECTRICAL APPROPRIATENESS OF THIS DESIGN AND WILL NOT ASSUME RESPONSIBILITY FOR IMPROPER ENGINEERING, CONSTRUCTION, HANDLING, OR USE. ALL MATERIALS AND CONSTRUCTION MUST COMPLY WITH THE MOST STRINGENT FEDERAL AND LOCAL FIRE, SAFETY, ENERGY AND ENVIRONMENTAL CODES.

THE STEVENS CENTER

Joan Hanes Theatre
 405 4th Street NW
 Winston-Salem NC 27101

Choreographers

Mere Cunningham, Eriban Outlaw, Jobby Lindsey, Tom Gold

PRODUCTION TEAM

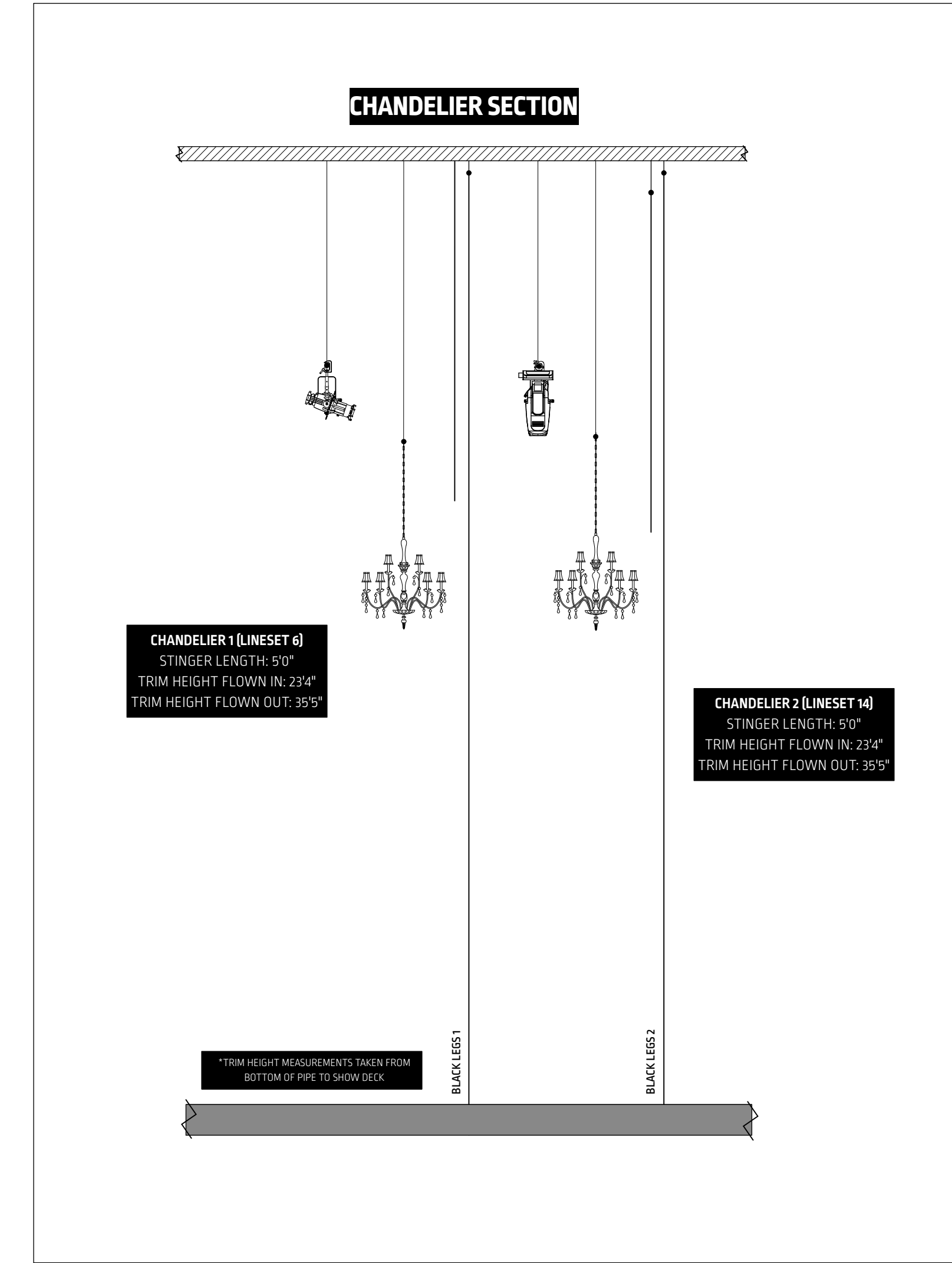
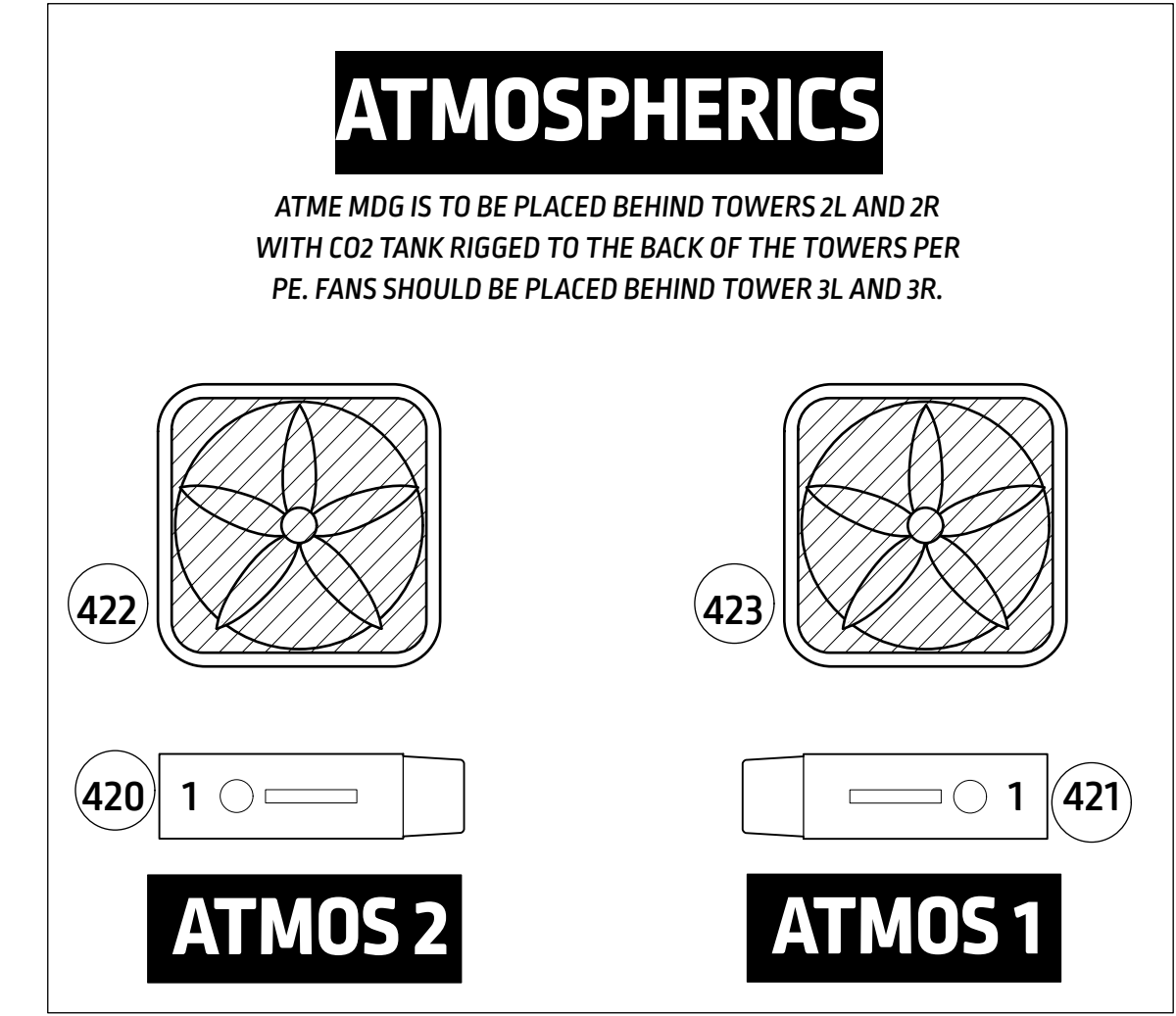
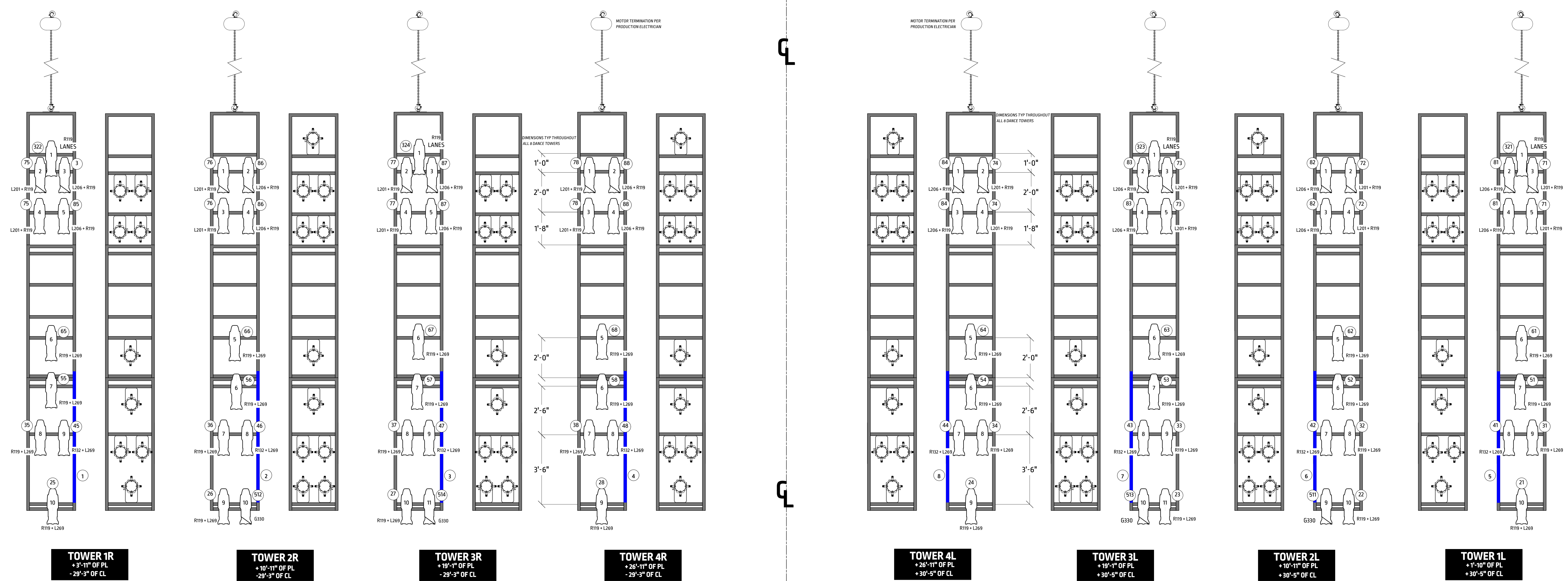
LD: Sage Green + Dominick Z. Riches
 Oceans Lighting Director: Eli Thomas
 Assoc. LD: Lauren Lee
 Asst. LD: Chris Mendell
 PE: Evie Nootenboom
 ET: Julian Cordova
 Programmer: Garrett Deutsch
 Production Manager: Cameron Russell
 PSM: Sydney Knowland

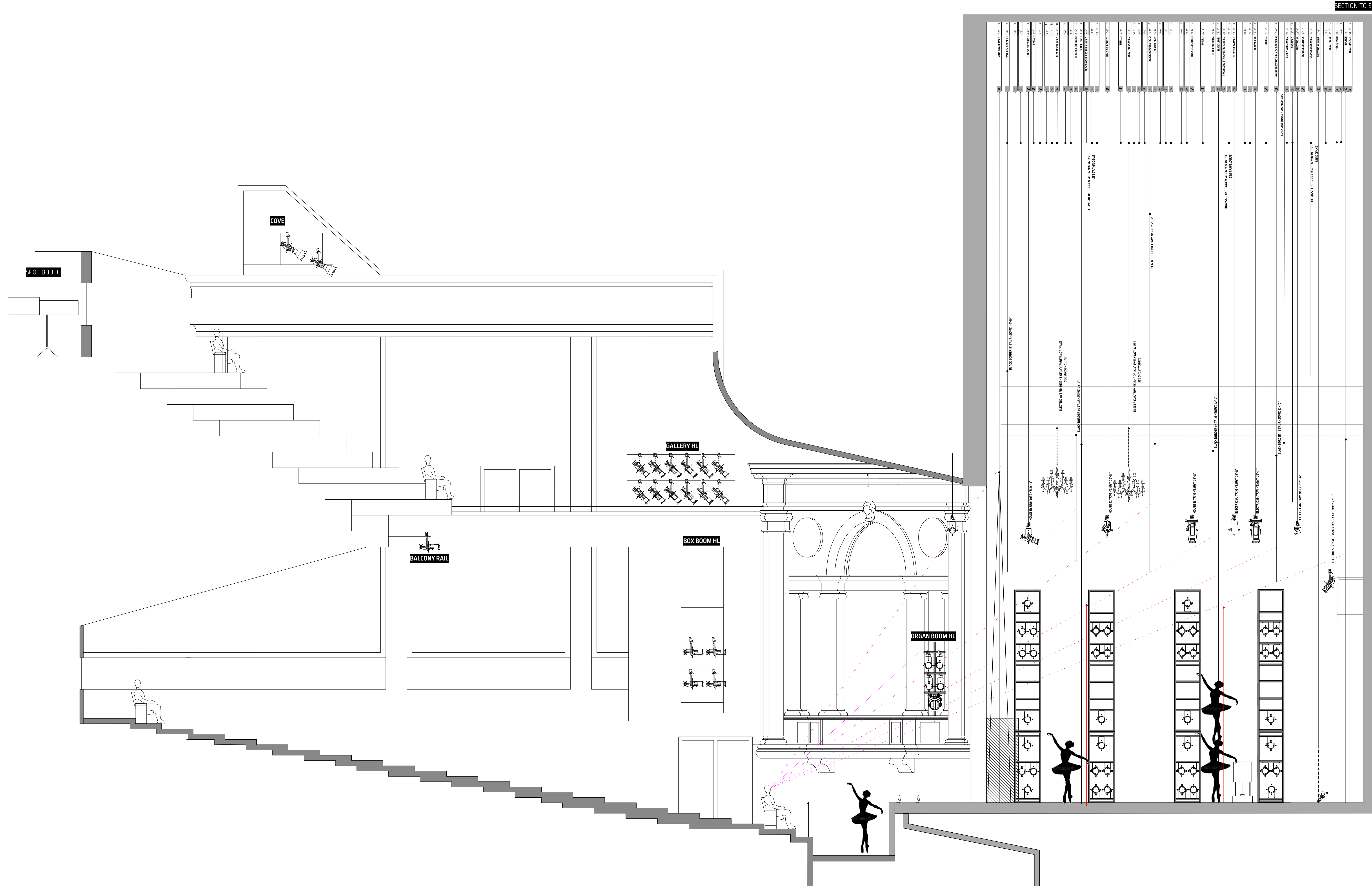
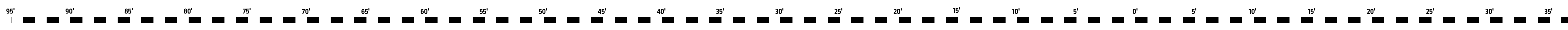
BOOMS + DETAIL

DRAFTED BY: Sage Green + Dominick Z. Riches
 Date: 04-15-2023
 Scale: 1/2" = 1'-0"
 Chandelier Section: 3/4" = 1'-0"
 VW File Name: SPRANCE PLOT AS-BUILT.vwx

SHEET 3

OF 5





KEY

- ETC SOURCE4 100EG @ 575w
- ETC SOURCE4 190EG @ 575w
- ETC SOURCE4 260EG @ 575w
- ETC SOURCE4 360EG @ 575w
- ETC SOURCE4 500EG @ 575w
- ETC S4 LUSTR II 26 @ 167w (DIRECT)
- ETC S4 LUSTR II 36 @ 167w (DIRECT)
- ETC S4 LUSTR II 50 @ 167w (DIRECT)
- ETC S4 PAR MFL @ 575w
- CHROMA Q COLORBLAST TR @ 50w
- HIGH END SYSTEMS SOLAPIX 19 @ 1000w
- Ayrton GHBLI @ 800w (EXTEND MODE)
- CHROMA Q COLORFORCE 172 @ 800w (CYC LENS (LZCH X RGB))
- LYCIAN 1295 ELT @ 1.2 kW
- MDG ATME @ 75w
- FAN

LEGEND

- COLOR EXTENDER
- BEAM BENDER
- BARNDOOR
- HALF HAT
- MOTOR POINT
- COLOR TEMPLATE
- COLOR TEMPLATE
- COLOR TEMPLATE

NOTES

- ALL TRIMS ARE FROM BOTTOM OF PIPE TO STAGE DECK
- DANCE TOWER PLACEMENT MEASURED FROM CENTER OF TOWER
- REFER TO LW FOR COLOR, TEMPLATE AND PURPOSE
- PLEASE ACCOUNT FOR 10% OF SPARES
- ALL SCREENS FACE UPSTAGE
- ALL CF 72'S REQUIRE CYC LENSES
- NO SUBSTITUTIONS WITHOUT DESIGNER APPROVAL
- PLEASE PROVIDE SPARE BLACKTAK, BLACKWRAP, R19
- DROP COLOR + TEMPLATES PRIOR TO FOCUS

REVISIONS

REV. #	DATE	DESCRIPTION
A	02/16/2023	Rough Plot
B	03/02/2023	Final Plot Rev B
C	03/02/2023	Chambling - P/E
D	03/02/2023	Final p/t Changes
E	03/02/2023	OCEANS Revisions
F	03/12/2023	DT-LEGS
G	04/02/2023	FOH Frost Additions
H	04/16/2023	As Built



LIGHTING DESIGNERS

Sage Green (762) 822-4063
 sage.sm@artists.unca.edu

Dominick Z. Riches (818) 877-0337
 riches.d@artist.unca.edu

THIS DRAWING REPRESENTS VISUAL AND CONSTRUCTION SUGGESTIONS ONLY. IT DOES NOT REPLACE THE KNOWLEDGE AND ADVICE OF A LICENSED STRUCTURAL ENGINEER. THE DESIGNER IS UNQUALIFIED TO DETERMINE THE STRUCTURAL OR ELECTRICAL APPROPRIATENESS OF THIS DESIGN AND WILL NOT ASSUME RESPONSIBILITY FOR IMPROPER ENGINEERING, CONSTRUCTION, HANDLING, OR USE. ALL MATERIALS AND CONSTRUCTION MUST COMPLY WITH THE MOST STRINGENT FEDERAL AND LOCAL FIRE, SAFETY, ENERGY AND ENVIRONMENTAL CODES.

THE STEVENS CENTER

Joan Hanes Theatre
 405 4th Street NW
 Winston-Salem NC 27101

Choreographers

Mere Cunningham Eriban Outlaw Ashley Lindsey Tom Gold

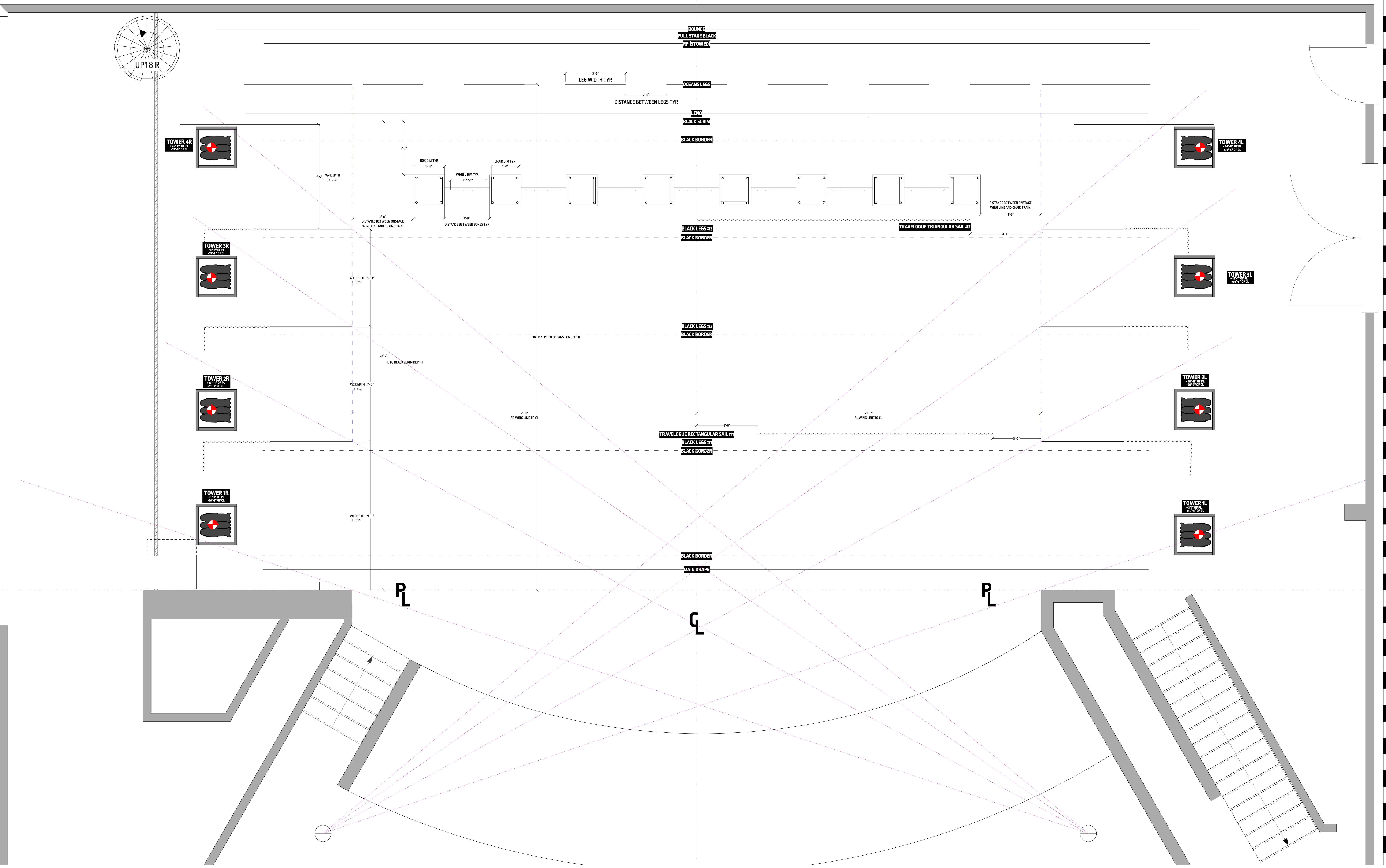
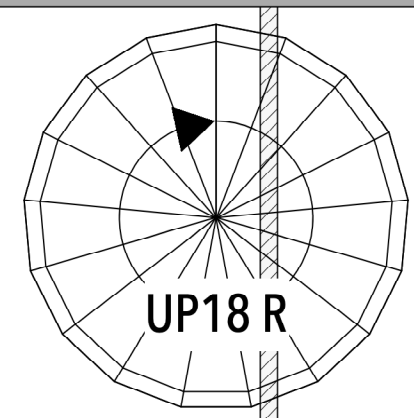
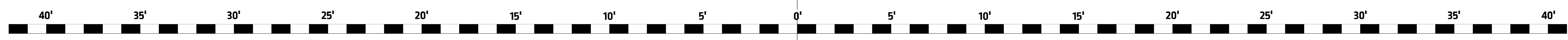
PRODUCTION TEAM

LD: Sage Green + Dominick Z. Riches
 Oceans Lighting Director: Eli Thomas
 Assoc. LD: Lauren Lee
 Asst. LD: Chris Mendell
 PE: Evie Nootenboom
 ET: Julian Cordova
 Programmer: Garrett Deutsch
 Production Manager: Cameron Russell
 PSM: Sydney Knowland

SECTION SHEET

DRAFTED BY: Sage Green + Dominick Z. Riches
 Date: 04-15-2023
 Scale: 1/4"=1'-0"
 VW File Name: SPRANCE PLOT AS-BUILT.vwx

4 OF 5



KEY

- ETC SOURCE4 100EG @ 575w
- ETC SOURCE4 190EG @ 575w
- ETC SOURCE4 260EG @ 575w
- ETC SOURCE4 360EG @ 575w
- ETC SOURCE4 500EG @ 575w
- ETC S4 Lustr II 26 @ 167w (Direct)
- ETC S4 Lustr II 36 @ 167w (Direct)
- ETC S4 Lustr II 50 @ 167w (Direct)
- ETC S4 PAR MFL @ 575w
- CHROMAQ COLORBLAST TR @ 50w
- HIGH END SYSTEMS SOLARIX 10 @ 1000w
- ANYTON GHBLU @ 800w (EXTEND MODE)
- CHROMAQ COLORFORCE 172 @ 800w
- CYC Lens (2CH X RGB)
- LYCIAN 1295 ELY @ 1.2 kw
- MDG ATM @ 755w
- FAN

LEGEND

- COLOR EXTENDER
- MOTOR POINT
- BEAM BENDER
- BARNDÖÖR
- HALF HAT
- COLOR
- TEMPLE
- UIR
- CH

NOTES

- ALL TRIMS ARE FROM BOTTOM OF PIPE TO STAGE DECK
- DANCE TOWER PLACEMENT MEASURED FROM CENTER OF TOWER
- REFER TO LW FOR COLOR, TEMPLATE AND PURPOSE
- PLEASE ACCOUNT FOR 1% OF SPARES
- ALL SCREENS FACE UPSTAGE
- ALL CF 72'S REQUIRE CYC LENSES
- NO SUBSTITUTIONS WITHOUT DESIGNER APPROVAL
- PLEASE PROVIDE SPARE BLACKK, BLACKVRAR, R70
- DROP COLOR - TEMPLATES PRIOR TO FOCUS

REVISIONS

REV. #	DATE	DESCRIPTION
A	02/02/2023	Rough Plot
B	03/02/2023	Final Plot Rev B
C	03/02/2023	Chambering - P/E
D	03/02/2023	Final plot Changes
E	03/29/2023	OCEANS Revisions
F	03/29/2023	DTL EGS
G	04/20/2023	FOH Frost Additions
H	04/20/2023	As Built



LIGHTING DESIGNERS

Sage Green (762) 622-4063
 Dominick Z. Riches (818) 877-0337
 green.sm@artists.unca.edu riches.d@artist.unca.edu

THIS DRAWING REPRESENTS VISUAL AND CONSTRUCTION SUGGESTIONS ONLY. IT DOES NOT REPLACE THE KNOWLEDGE AND ADVICE OF A LICENSED STRUCTURAL ENGINEER. THE DESIGNER IS UNQUALIFIED TO DETERMINE THE STRUCTURAL OR ELECTRICAL APPROPRIATENESS OF THIS DESIGN, AND WILL NOT ASSUME RESPONSIBILITY FOR IMPROPER ENGINEERING, CONSTRUCTION, HANDLING, OR USE. ALL MATERIALS AND CONSTRUCTION MUST COMPLY WITH THE MOST STRINGENT FEDERAL AND LOCAL FIRE, SAFETY, ENERGY AND ENVIRONMENTAL CODES.

THE STEVENS CENTER

Joan Hanes Theatre
 405 4th Street NW
 Winston-Salem NC 27101

Choreographers

Merc Cunningham, Endym Outlaw, Ashley Lindsey, Tom Gold

PRODUCTION TEAM

LD: Sage Green + Dominick Z. Riches
 Oceans Lighting Director: Eli Thomas
 Assoc. LD: Lauren Lee
 Asst. LD: Chris Mendell
 PE: Evie Nootenboom
 ET: Julian Cordova
 Programmer: Garrett Deutsch
 Production Manager: Cameron Russell
 PSM: Sydney Knowland

GROUND PLAN

DRAFTED BY: Sage Green + Dominick Z. Riches
 Date: 04-15-2023
 Scale: 1/2"=1'-0"
 VW File Name: SPRANCE PLOT AS-BUILT.vwx

SHEET 5 OF 5