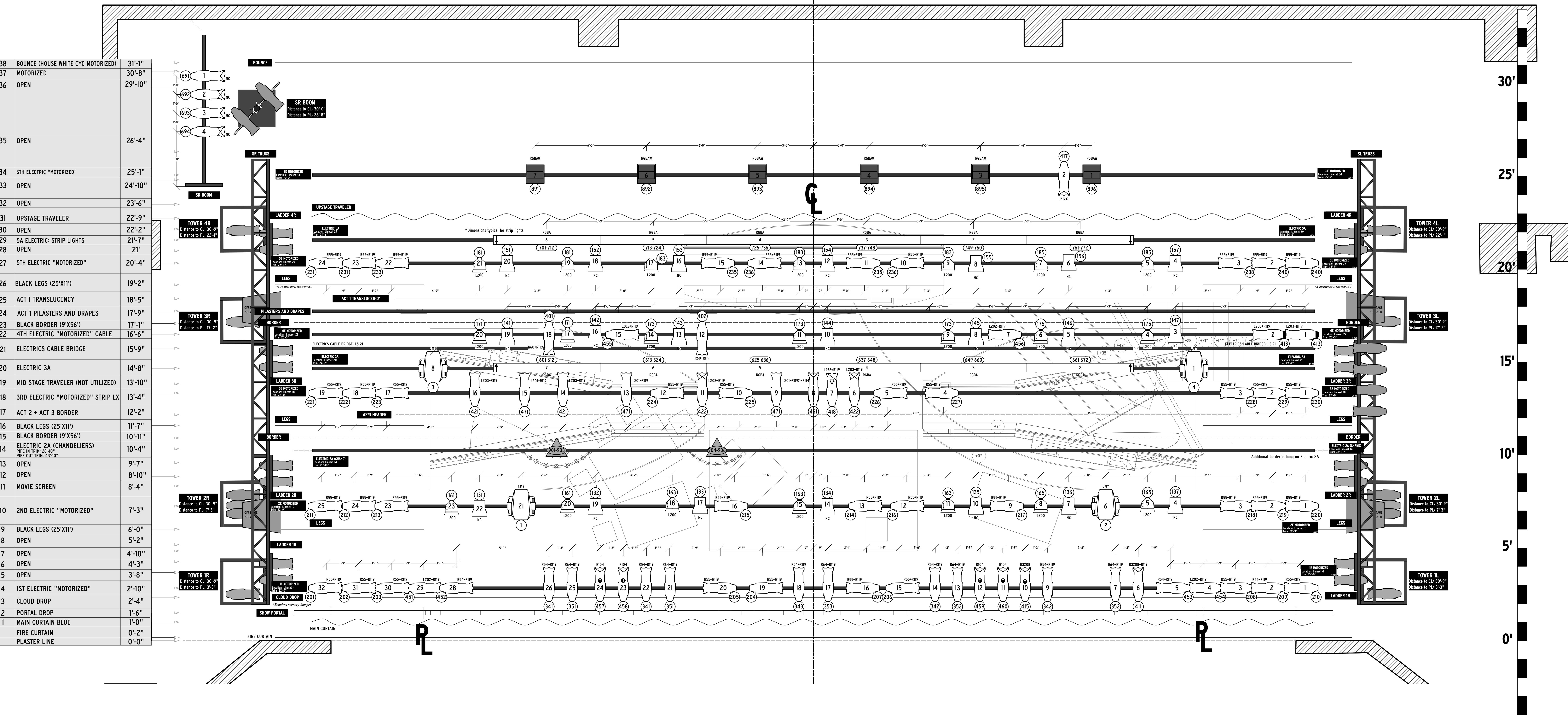
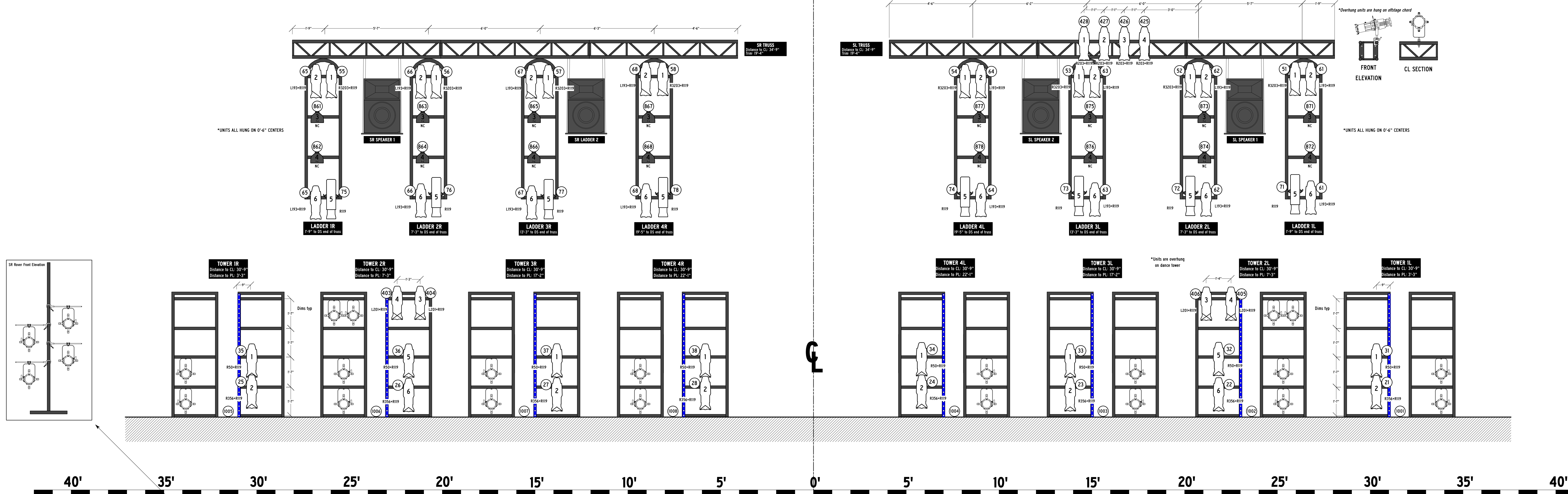
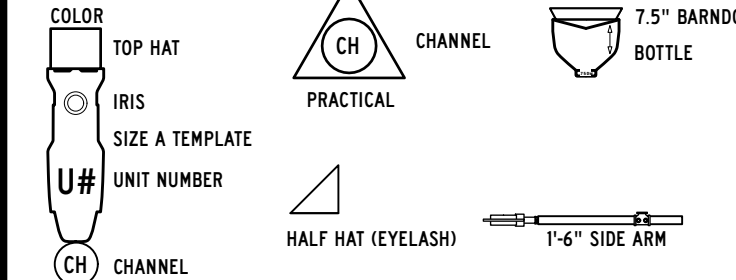


- ETC SOURCE4 10DEG @575W
- ETC SOURCE4 19DEG @575W
- ETC SOURCE4 26DEG @575W
- ETC SOURCE4 36DEG @575W
- ETC SOURCE4 36DEG @750W
- ETC SOURCE4 50DEG @575W
- ETC S4 19DEG LUSTRII @117W DIRECT MODE
- ETC S4 26DEG LUSTRII @117W DIRECT MODE
- CHAUVET OVATION E-F910FC @225W BICH MODE
- CHAUVET OVATION C-640FC @175W BICH
- ETC D60 VIVID MEDIUM OVAL @161W DIRECT MODE
- ETC SOURCE4 PAR MCM MFL @575W
- ETC SOURCE4 PARNEL @575W
- HES STUDIO BEAM @700W
- HES SOLAFRAME 1000 @900W
- CHROMAQ COLORFORCE 72 @800W ARCH BEAM MODE
- BLUE ROPE LIGHT @10W
- ADAFRUIT NEOPIXEL FLEXIBLE 16x16 RGB LED MATRIX



LABEL LEGEND



NOTES

- ALL UNITS ARE PLACED TO UNLESS NOTED OTHERWISE
- ALL UNITS ON HANGERS ARE HUNG ON 0'-4" CENTERS
- ALL TOWER OR BOTTOM ARE TAKEN FROM BOTTOM OF SYSTEM PIPE
- DIMENSIONS FOR LADDERS/SPACERS COORDINATES ARE NOTED FROM CENTER
- PLEASE PROVIDE ELECTRICAL TAP, GAY TAP, AND SPICE TAPE
- L20 SCENE FACE RACE FROM THE AUDIENCE
- PLEASE PROVIDE SPARE WIRE (RED, BLUE, BLACK, AND BROWN)
- PLEASE DRAP ALL CABLES, PIPES, AND TRIMMINGS FROM TO FOCUS
- LADDERS ARE MEASURED FROM CENTER OF LADDER TO 50 POINT OF CORRESPONDING PIPES
- GREYED UNITS INDICATE UNACTIVE REF UNITS THAT WILL REMAIN IN SPACE
- OR RIGGING IS ONLY IN PLACE DURING ACT 1
- CLOUD DROP REQUIRES SCENERY HANGER
- ORIENT HALF HATS WITH BACKS TOWARD HOUSE

LIGHTING DESIGNER

DOMINICK ZAYNE RICHES
(818) 877-0337
riches@artist.uncsa.edu



HIGH POINT THEATRE
220 EAST COMMERCE AVE.
HIGH POINT, NORTH CAROLINA, 27661

PRODUCTION STAFF

| | |
|-----------------------------|-------------------|
| DIRECTOR | Steve LaCasse |
| PRODUCTION MANAGER | Carson Rainey |
| SCENIC DESIGNER | Nikolas Serrano |
| PRODUCTION STAGE MANAGER | Eva Hesse-Schramm |
| PRODUCTION ELECTRICIAN | Evie Nootenboom |
| E1 | George Janikula |
| E2 | Abby Buck |
| ASSOCIATE LIGHTING DESIGNER | Noah Welby |
| PROGRAMMER | Harrison Reid |
| FACULTY ADVISOR | Clifton Taylor |

REVISIONS

| REVISION | DATE | DESCRIPTION |
|----------|------------|--------------------------|
| N/R | 1/16/2023 | PRELIM ROUGH |
| A | 11/20/2023 | FINAL |
| B | 12/10/2023 | VENUE MODIFICATIONS |
| C | 12/20/2023 | SET ELECTRIC/TEMPERATURE |
| D | 12/29/2023 | CHANNEL/CLEAN UP |
| E | 1/6/2024 | COLOR CLEAN UP |
| F | 1/13/2024 | AS BUILTS |

OVERSTAGE

DRAWN BY: DZR/NRW
DATE: 1/31/2024
SCALE: 1/2" = 1'-0"



KEY

- ETC SOURCE4 10DEG @575W
- ETC SOURCE4 19DEG @575W
- ETC SOURCE4 26DEG @575W
- ETC SOURCE4 36DEG @575W
- ETC SOURCE4 36DEG @750W
- ETC SOURCE4 50DEG @575W
- ETC S4 19DEG LUSTRI II @117W DIRECT MODE
- ETC S4 26DEG LUSTRI II @117W DIRECT MODE
- CHAUVET OVATION E-F910FC 10CH MODE @225W
- CHAUVET OVATION C-640FC @175W
- ETC D60 VIVID MEDIUM OVAL @161W DIRECT MODE
- ETC SOURCE4 PAR MCM MFL @575W
- ETC SOURCE4 PARNEL @575W
- HES STUDIO BEAM @700W
- HES SOLAFRAME 1000 @900W
- CHROMAQ COLORFORCE 72 @800W ARCH BEAM MODE
- BLUE ROPE LIGHT @10W
- ADAFRUIT NEOPIXEL FLEXIBLE 16x16 RGB LED MATRIX

LABEL LEGEND

- TEMPERATURE
- COLOR
- TOP HAT
- IRIS
- SIZE & TEMPLATE
- UNIT NUMBER
- CHANNEL
- 7.5" BARNDORF BOTTLE
- PRACTICAL
- HALF HAT (EYEGLASS)
- 7.5" SIDE ARM

NOTES

- ALL UNITS ARE PLACED TO UNLESS OTHERWISE SPECIFIED
- ALL UNITS ON DANCE TOWERS ARE HUNG ON 2'-6" CENTERS
- ALL TOP OF BOTTLES ARE TAKEN FROM BOTTOM OF SYSTEM PIPE
- DANCE TOWER/LADDER/SERVER COORDINATES ARE NOTED FROM CENTER
- PLEASE PROVIDE ELECTRICAL TAP, GAY TUBE, AND SPIKE TUBE
- LED SCENE FACE AWAY FROM THE AUDIENCE
- PLEASE PROVIDE SPARE BAY, RISER, LASH, RISER, AND RISE
- PLEASE DRAP ALL CLOUT, FRONS, AND TEMPLATES FROM TO FOCUS
- LADDERS ARE MEASURED FROM CENTER OF LADDER TO POINT OF CORRESPONDING TUBE
- GREYED UNITS INDICATE UNACTIVE REF UNITS THAT WILL REMAIN IN SPACE
- DRY RIVER IS ONLY IN PLACE DURING FC1
- CLOUD DRAP REQUIRES CENTER NUMBER
- ORIENT HALF HATS WITH BACKS TOWARD HOUSE

LIGHTING DESIGNER

DOMINICK ZAYNE RICHES
(818) 877-0337
riches.d@artist.uncsa.edu

THIS DRAWING REPRESENTS VISUAL AND CONSTRUCTION SUGGESTIONS ONLY. IT DOES NOT REPLACE THE KNOWLEDGE AND ADVICE OF A LICENSED STRUCTURAL ENGINEER. THE DESIGNER IS UNQUALIFIED TO DETERMINE THE STRUCTURAL OR ELECTRICAL APPROPRIATENESS OF THIS DESIGN AND WILL NOT ASSUME RESPONSIBILITY FOR IMPROPER ENGINEERING, CONSTRUCTION, HANDLING, OR USE. ALL MATERIALS AND CONSTRUCTION MUST COMPLY WITH THE MOST STRINGENT FEDERAL AND LOCAL FIRE, SAFETY, ERECTION, AND ENVIRONMENTAL CODES.



HIGH POINT THEATRE
220 EAST COMMERCE AVE.
HIGH POINT, NORTH CAROLINA 27261

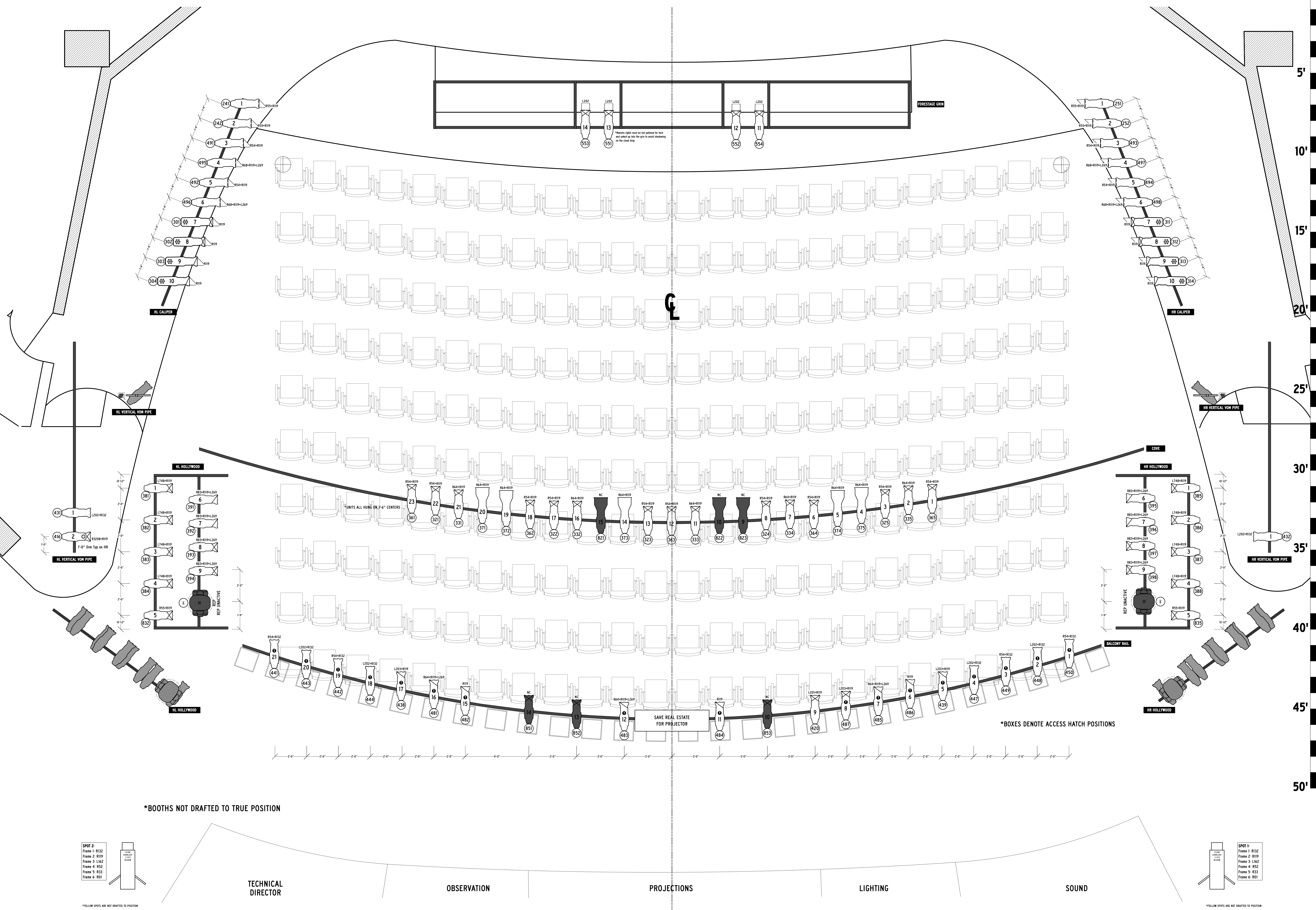
PRODUCTION STAFF

| | |
|-----------------------------|-------------------|
| DIRECTOR | Steve LaCasse |
| PRODUCTION MANAGER | Carson Rainey |
| SCENIC DESIGNER | Nikolas Serrano |
| PRODUCTION STAGE MANAGER | Eva Hesse-Schramm |
| PRODUCTION ELECTRICIAN | Evie Nootenboom |
| E1 | George Janikula |
| E2 | Abby Bouck |
| ASSOCIATE LIGHTING DESIGNER | Noah Welby |
| PROGRAMMER | Harrison Reid |
| FACULTY ADVISOR | Clifton Taylor |

REVISIONS

| REVISION | DATE | DESCRIPTION |
|----------|------------|--|
| N/R | 11/01/2023 | PRELIM ROUGH |
| A | 11/09/2023 | FINAL |
| B | 12/10/2023 | VENUE MODIFICATIONS |
| C | 12/20/2023 | SET ELECTRIC/TEMPERATURE CHANNELS/CLEAN UP |
| D | 12/20/2023 | CHANNELS/CLEAN UP |
| E | 1/06/2024 | COLOR CLEAN UP |
| F | 1/30/2024 | AS-BUILTS |

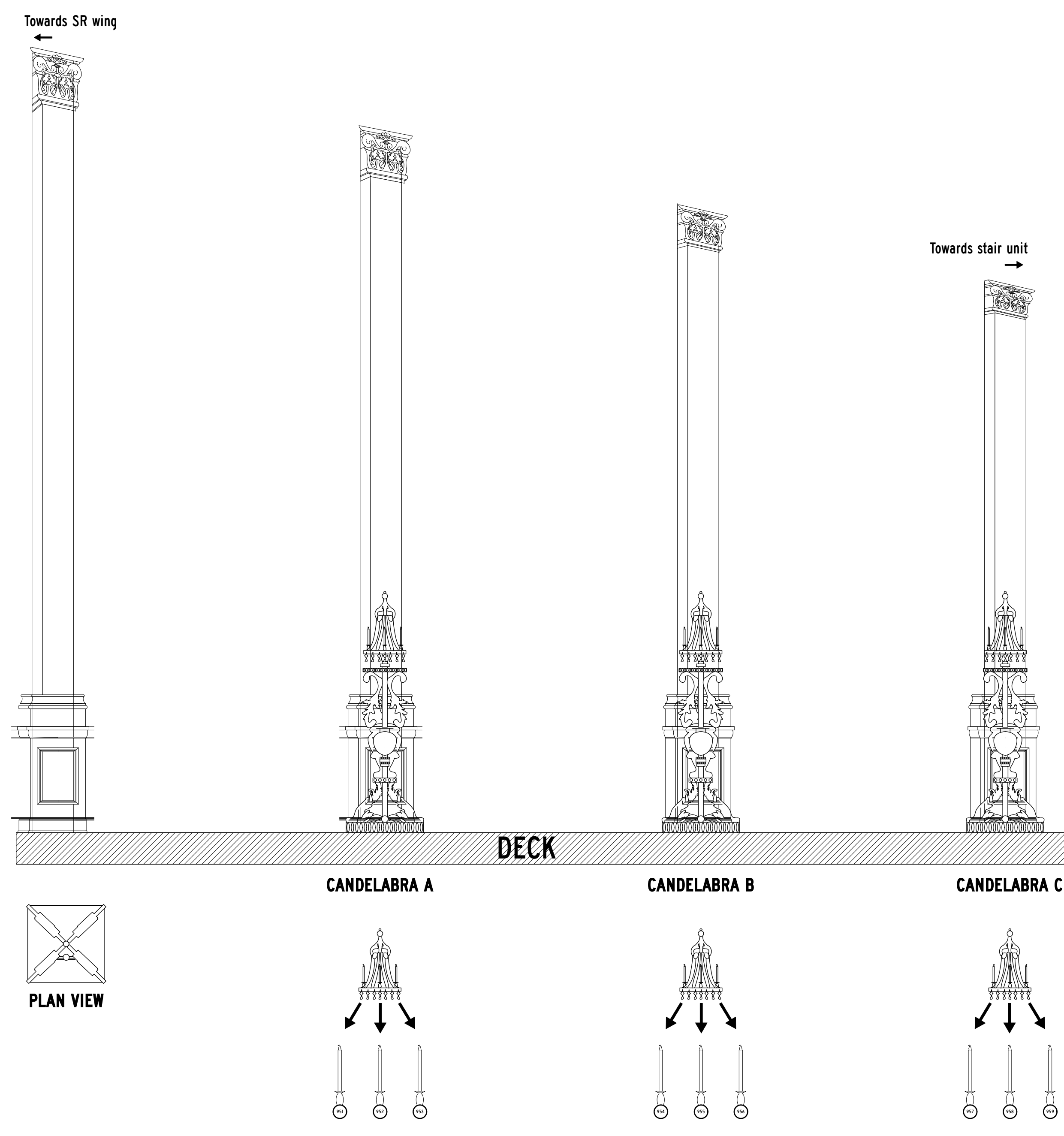
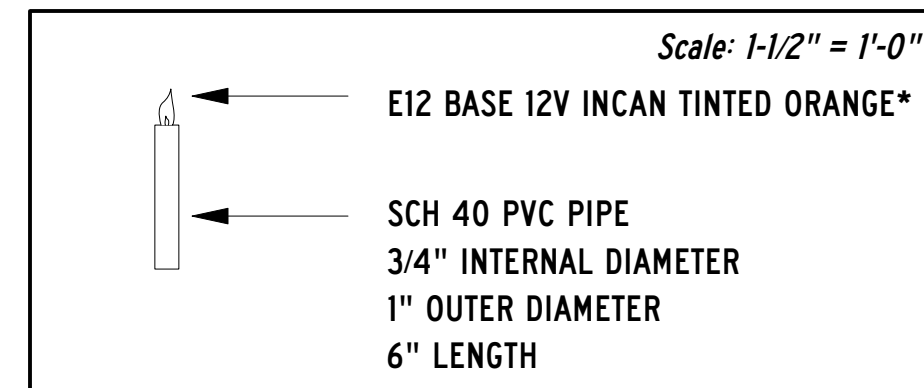
FOH
DRAWN BY: DZR-NRW
DATE: 1/31/2024
SCALE: 1/2" = 1'-0"



ACT 1 CANDELABRAS

Candelabras Specifications:
Candelabras A, B, and C rest in front of the 3 onstage most pilasters.
Candelabras A, B, and C all have three candles each.
Candelabras A, B, and C all require wireless control.

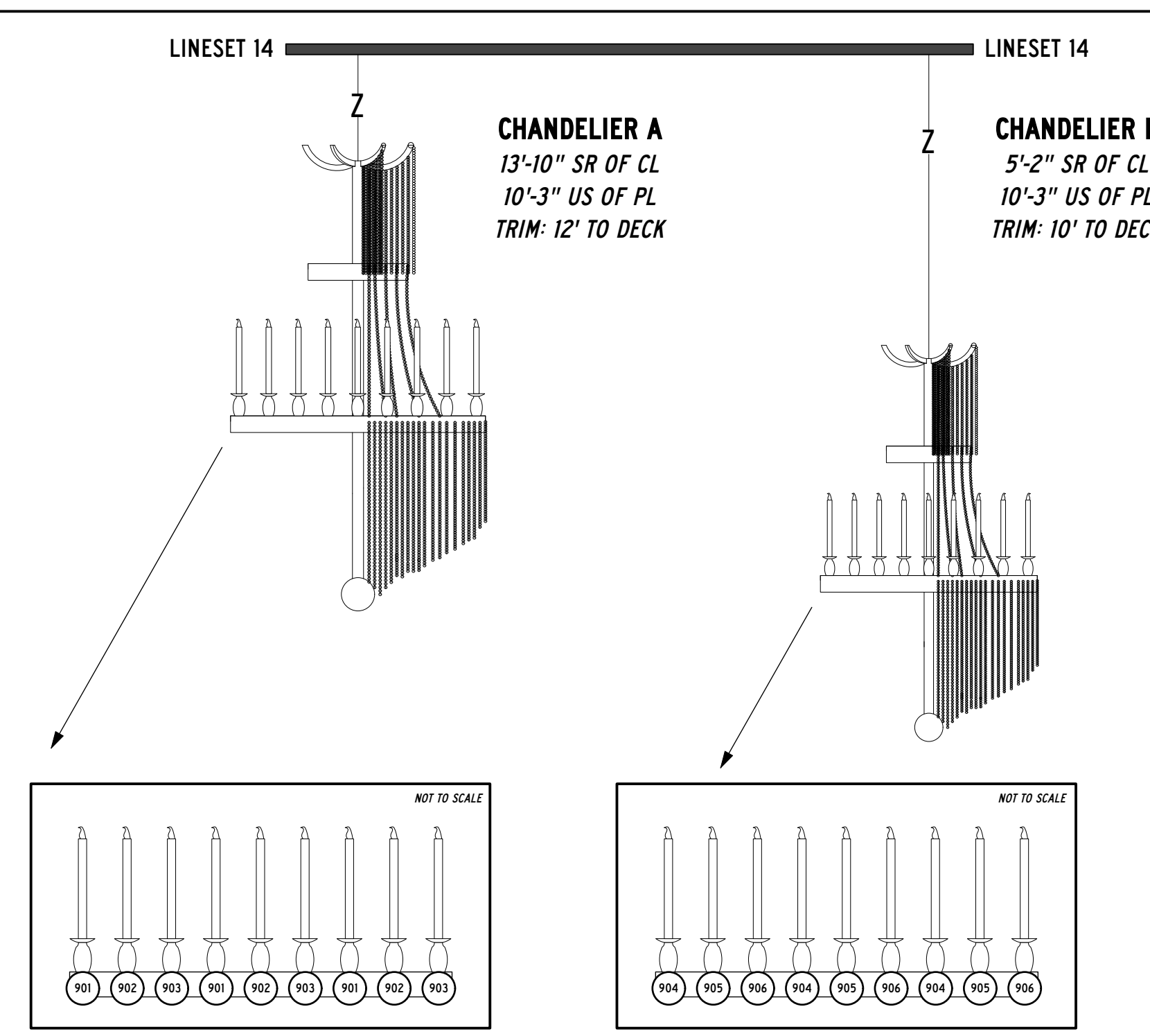
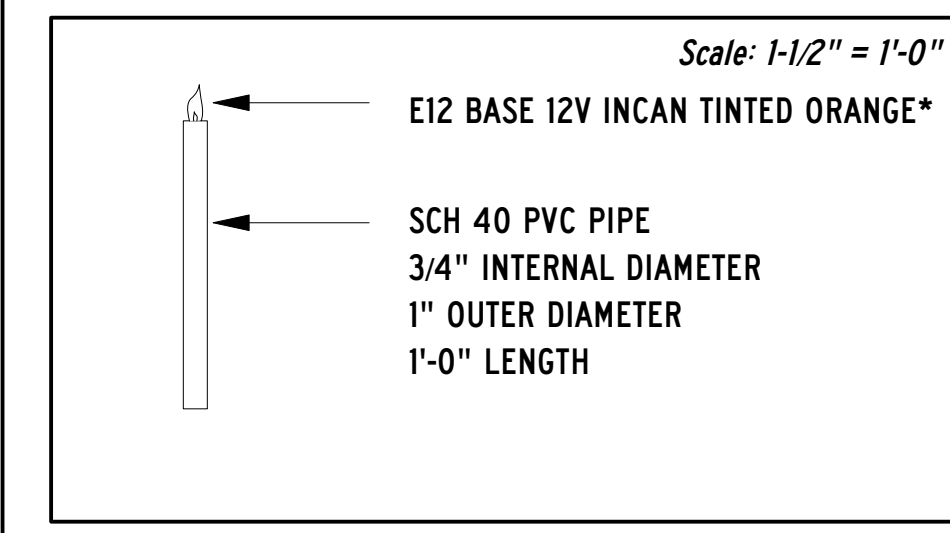
Candle Specifications:
*E12 base 12V incandescent tinted orange
Candles are made of 3/4" internal diameter PVC piping.
Lamps should sit flush with the top of the PVC piping.



ACT 1 CHANDELIERS

Chandelier Specifications:
Chandeliers are on LS 14.
Chandelier A and B both require 9 candles each.
Chandelier A and B both do not require wireless control.

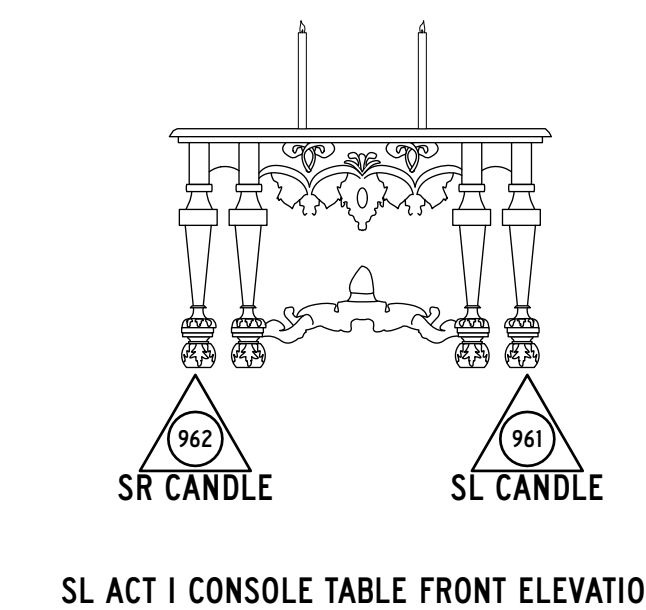
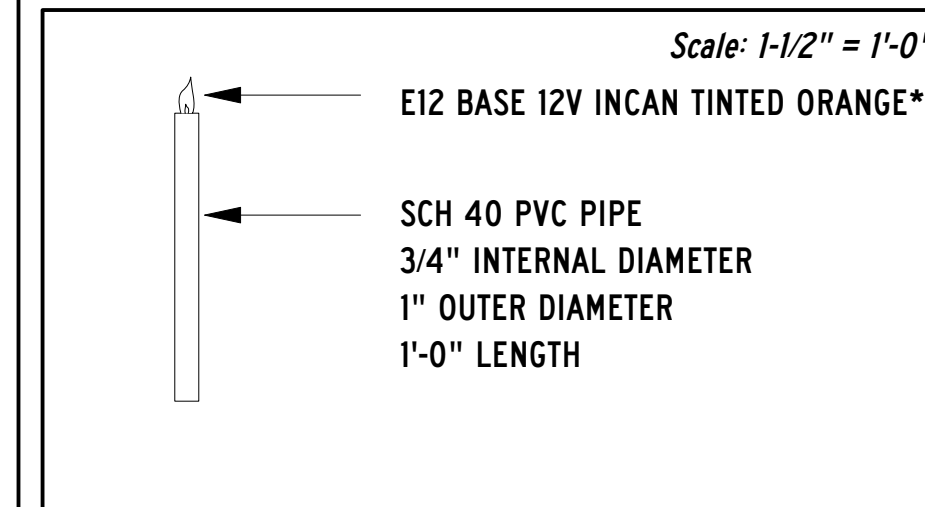
Candle Specifications:
E12 base 12V incandescent tinted orange*
Candles are made of 3/4" internal diameter PVC piping.
Lamps should sit flush with the top of the PVC piping.
Each chandelier requires three channels.



ACT 1 CONSOLE TABLE

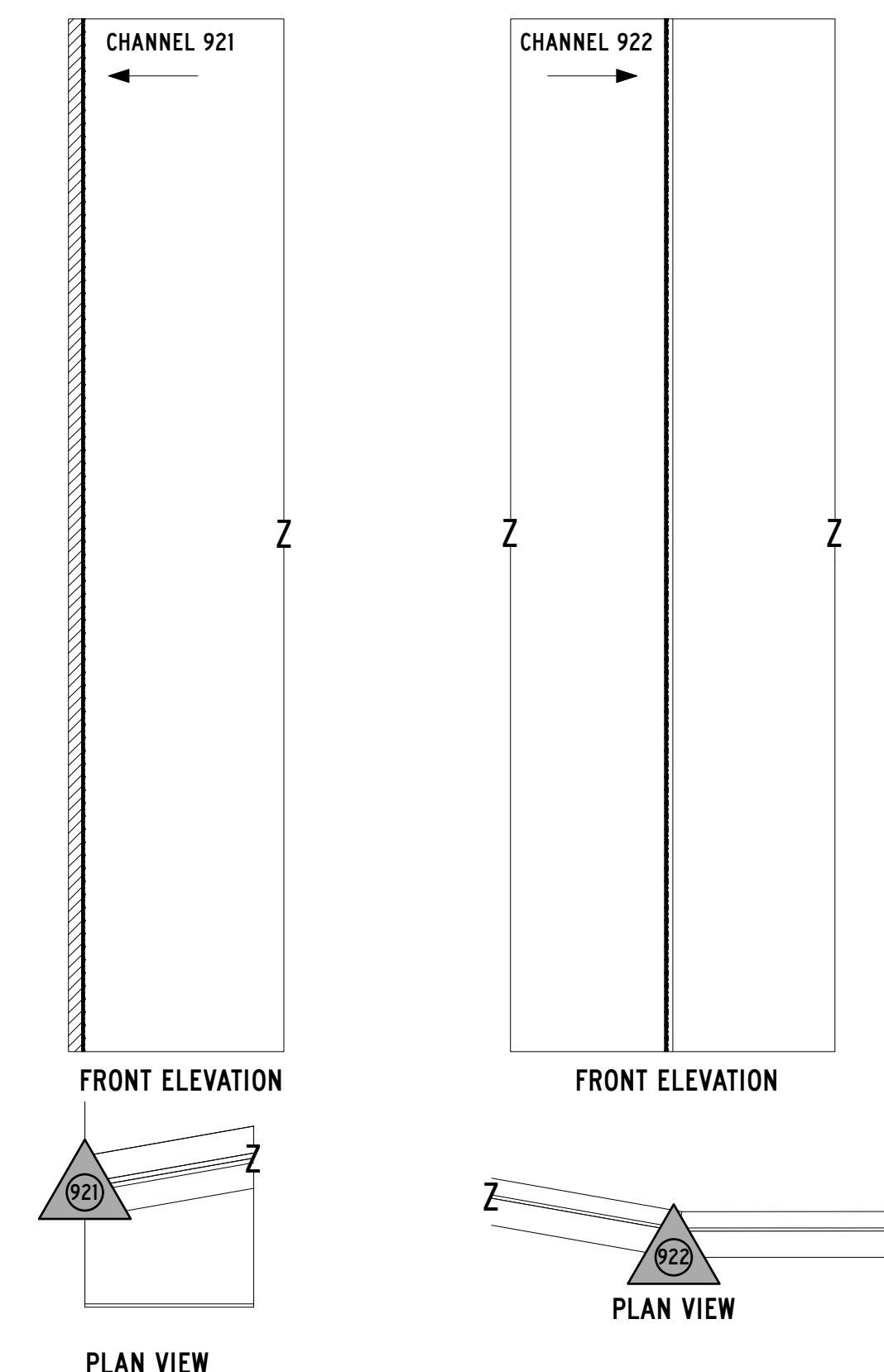
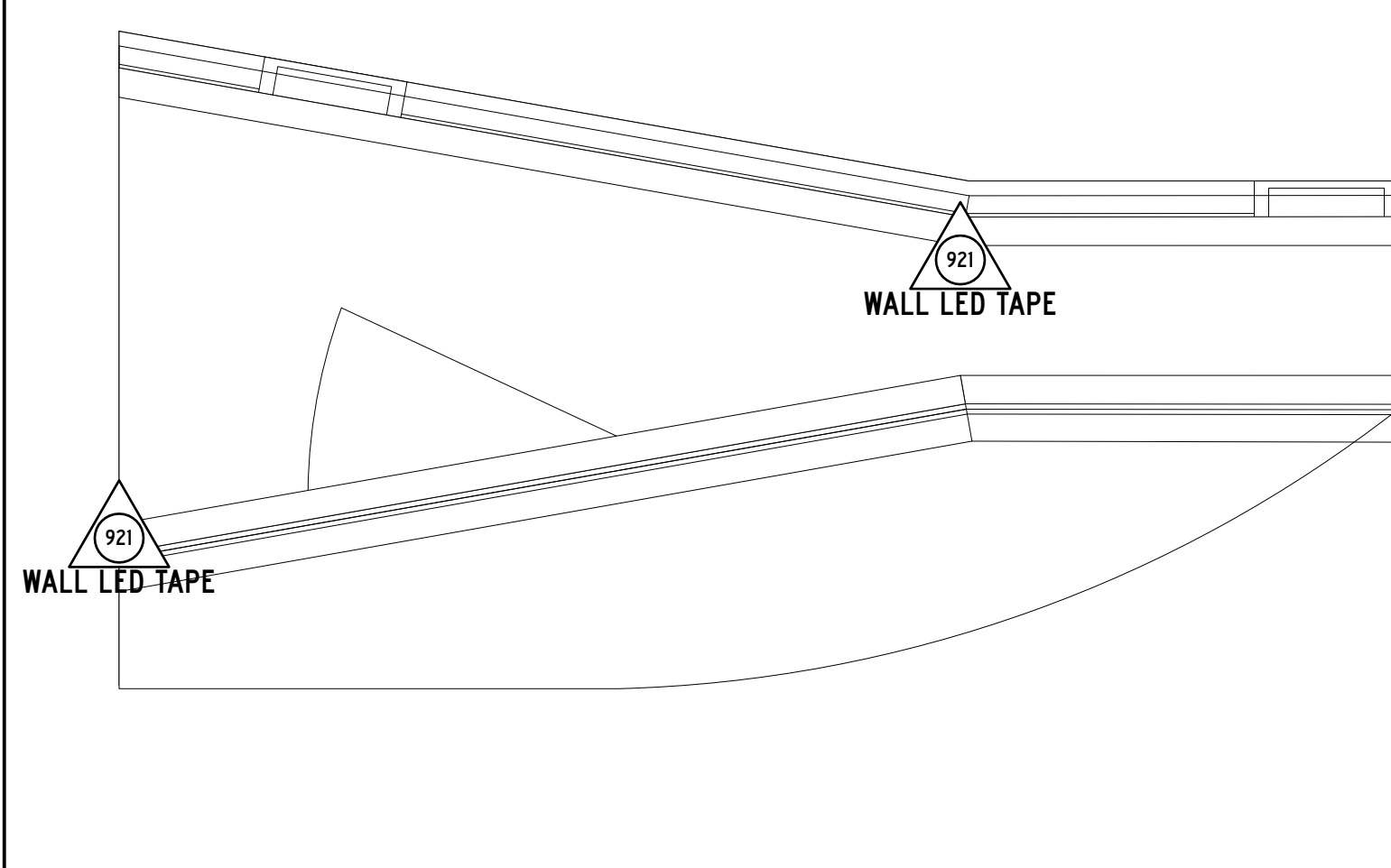
Specifications:
Candle sticks must be secured to the table.
Candle sticks requires wireless control.

Candle Specifications:
E12 base 12V incandescent tinted orange*
Candles are made of 3/4" internal diameter PVC piping.



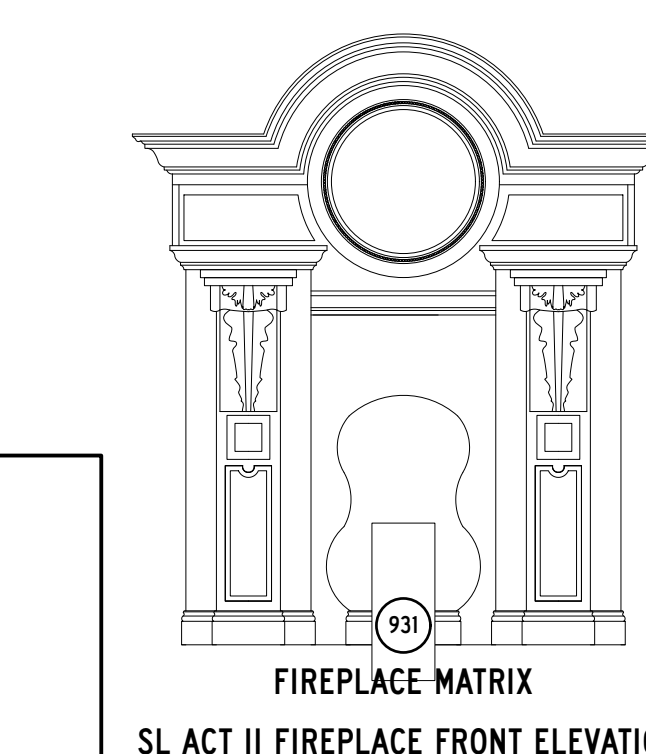
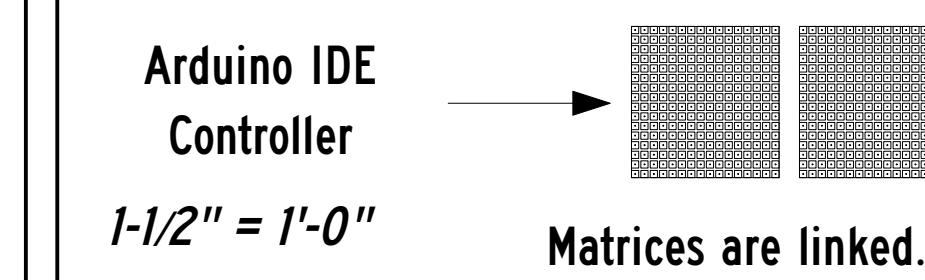
ACT 2 STAGE RIGHT WAGON

Specifications:
BTF Lighting 12V 5050 RGB+ Warm White IP 30 White PCB
CHANNEL 921: 13'-0" Requires wireless control
CHANNEL 922: 13'-0" Requires wireless control
Both channels line the internal walls from the deck to the top of the unit.



ACT 2 FIREPLACE

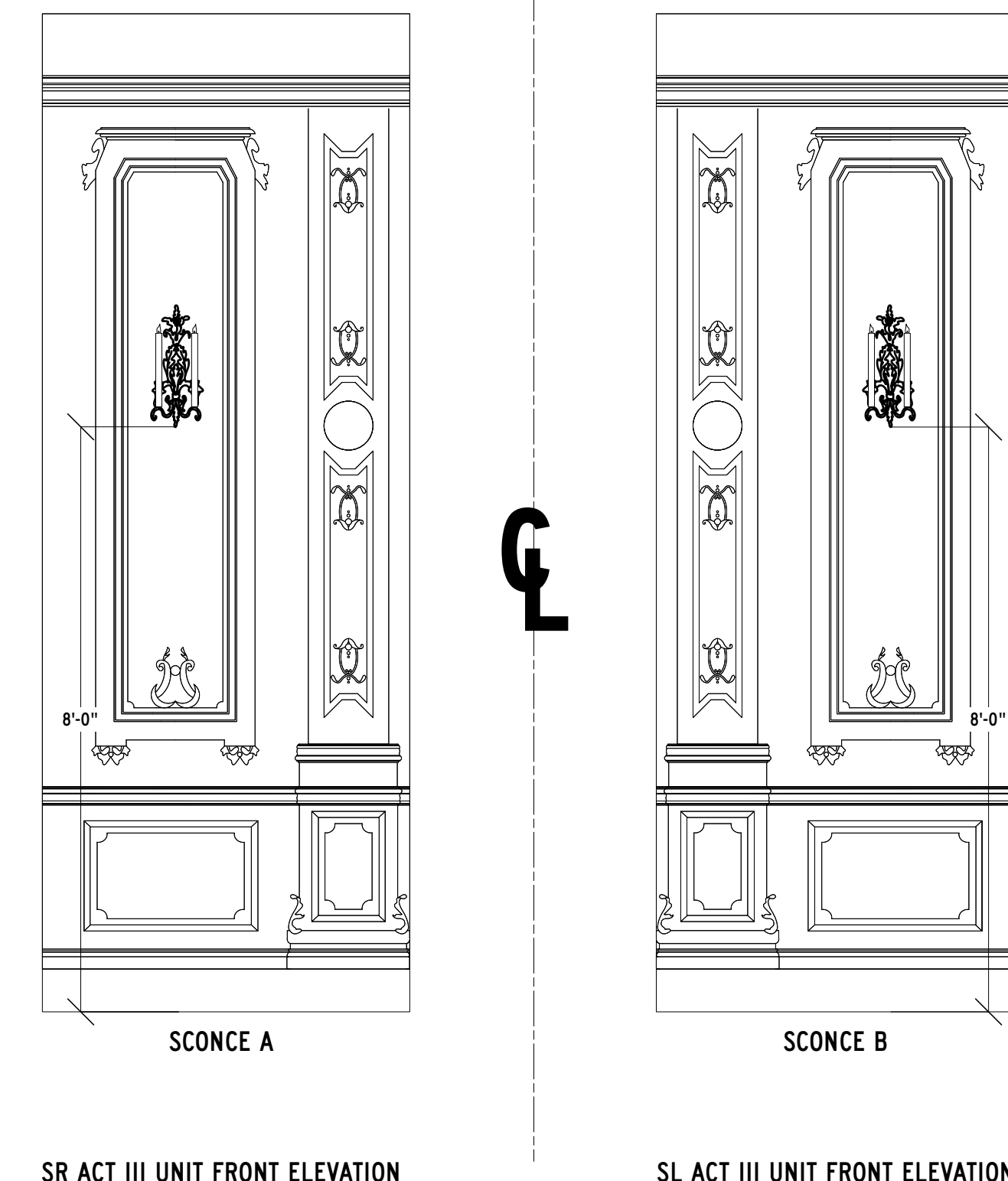
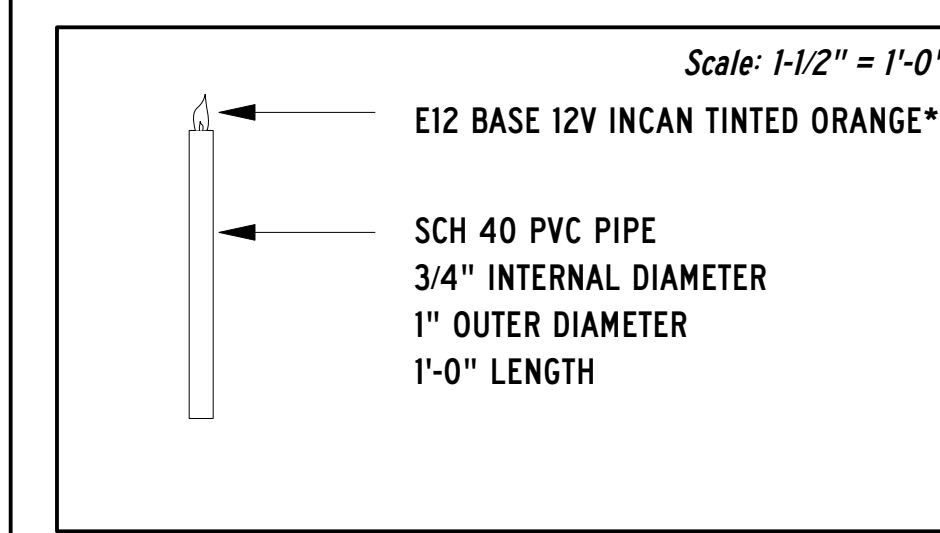
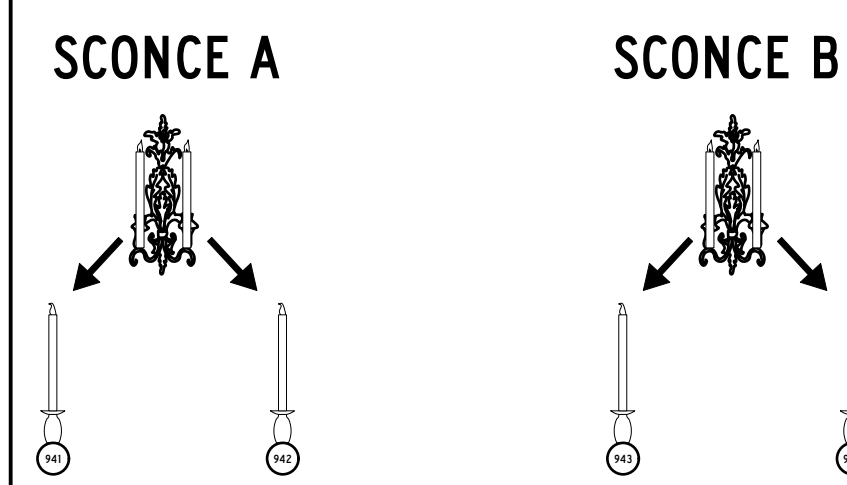
Specifications:
2 Flexible 16x16 NeoPixel RGB LED Matrices compatible with Arduino IDE
Panels are to be linked together to create one large matrix.
Panels must be hidden behind butternut squash base and out of sightlines.
Only one channel is required.
Tin foil is to be attached to the back facing side of the butternut squash base.



ACT 3 WALL SCONCES

Specifications:
Sconce A requires wireless control.
Sconce B requires wireless control.
Both sconces require 2 candle sticks.

Candle Specifications:
E12 base 12V incandescent tinted orange*
Candles are made of 3/4" internal diameter PVC piping.
Lamps should sit flush with the top of the PVC piping.
Each sconce requires one channel.



KEY

- ETC SOURCE4 10DEG @575W
- ETC SOURCE4 19DEG @575W
- ETC SOURCE4 26DEG @575W
- ETC SOURCE4 36DEG @575W
- ETC SOURCE4 36DEG @750W
- ETC SOURCE4 50DEG @575W
- ETC S4 19DEG LUSTRII @117W DIRECT MODE
- ETC S4 26DEG LUSTRII @117W DIRECT MODE
- CHAUVET OVATION E-F910FC @225W 10CH MODE
- CHAUVET OVATION C-640FC @175W 4CH
- ETC D60 VIVID MEDIUM OVAL @161W DIRECT MODE
- ETC SOURCE4 PAR MCM MFL @575W
- ETC SOURCE4 PARNEL @575W
- HES STUDIO BEAM @700W
- HES SOLAFRAME 1000 @900W
- CHROMAQ COLORFORCE 72 @800W ARCH NEAR MODE
- BLUE ROPE LIGHT @10W
- ADAFRUIT NEOPIXEL FLEXIBLE 16x16 RGB LED MATRIX

LABEL LEGEND

- TEMPLATE
- COLOR
- TOP HAT
- IRIS
- FACE A TEMPLATE
- UNIT NUMBER
- CHANNEL
- PRACTICAL
- CHANNEL
- 7.5" BARNDOOD
- BOTTLE
- HALF HAT LEVELSHAW
- 1" 3/4\"/> 1" 3/4" BARNDOOD

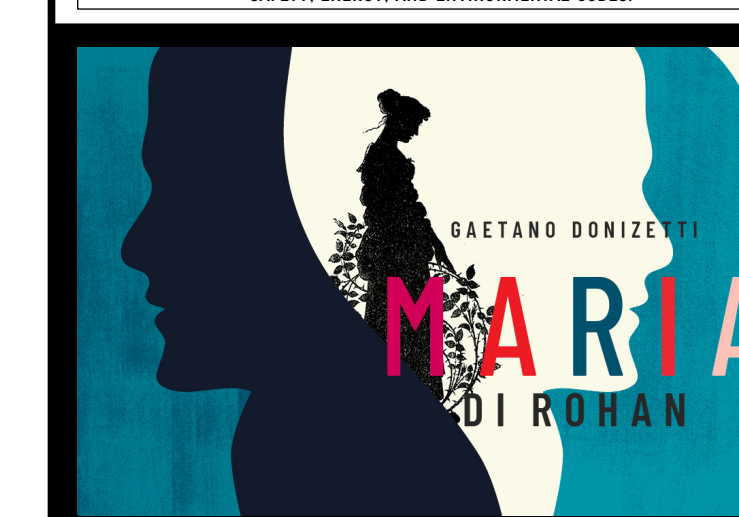
NOTES

- ALL UNITS ARE PLACED TO UNLESS NOTED OTHERWISE
- ALL UNITS ON HANGS TOWERS ARE HUNG ON 2'-6" CENTERS
- ALL TOP OF HANGS ARE TAKEN FROM BOTTOM OF SYSTEM PIPE
- DIMS TOWARDS LADDERS/OVER COORDINATES ARE NOTED FROM CENTER
- PLEASE PROVIDE ELECTRICAL TAP, GAIT TAPE, AND SPIKE TAPE
- LED SCREENS FACE AWAY FROM THE AUDIENCE
- PLEASE PROVIDE SPARE RIG, RISE, LASH, RISK, AND RISK
- PLEASE DRAP ALL COLOR, PROPS, AND TEMPLATES FROM TO FOCUS
- LADDERS ARE MEASURED FROM CENTER OF LADDERS TO QS POINT OF CORRESPONDING DIMS
- GREYED UNITS INDICATE UNACTIVE REF UNITS THAT WILL REMAIN IN SPACE
- DR RIGGED IS ONLY IN PLACE DURING ACT 1
- CLOUD DRAP REQUIRES SCENERY HUNTER
- ORIENT HALF HATS WITH BACKS TOWARD HOUSE

LIGHTING DESIGNER

DOMINICK ZAYNE RICHES
(818) 877-0337
riches.d@artist.uncsa.edu

THIS DRAWING REPRESENTS VISUAL AND CONSTRUCTION SUGGESTIONS ONLY. IT DOES NOT REPLACE THE KNOWLEDGE AND ADVICE OF A LICENSED STRUCTURAL ENGINEER. THE DESIGNER IS UNQUALIFIED TO DETERMINE THE STRUCTURAL OR ELECTRICAL APPROPRIATENESS OF THIS DESIGN AND WILL NOT ASSUME RESPONSIBILITY FOR IMPROPER ENGINEERING, CONSTRUCTION, HANDLING, OR USE. ALL MATERIALS AND CONSTRUCTION MUST COMPLY WITH THE MOST STRINGENT FEDERAL AND LOCAL FIRE, SAFETY, ERECTION, AND ENVIRONMENTAL CODES.



HIGH POINT THEATRE

220 EAST COMMERCE AVE.
HIGH POINT, NORTH CAROLINA 27261

PRODUCTION STAFF

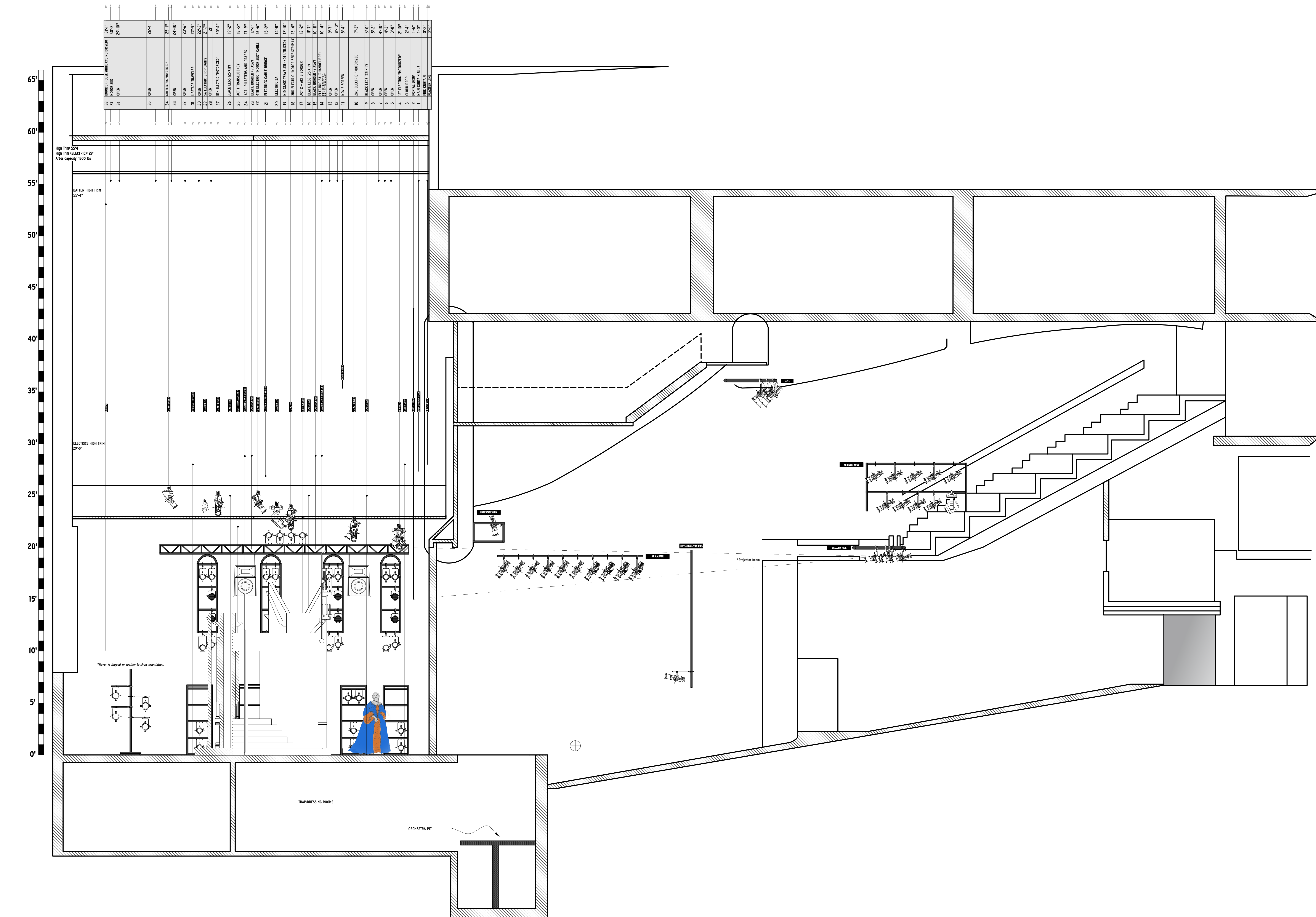
| | |
|-----------------------------|-------------------|
| DIRECTOR | Steve LaCasse |
| PRODUCTION MANAGER | Carson Rainey |
| SCENIC DESIGNER | Nikolas Serrano |
| PRODUCTION STAGE MANAGER | Eva Hesse-Schramm |
| PRODUCTION ELECTRICIAN | Evie Nootenboom |
| E1 | George Janikula |
| E2 | Abby Bouck |
| ASSOCIATE LIGHTING DESIGNER | Noah Welby |
| PROGRAMMER | Harrison Reid |
| FACULTY ADVISOR | Clifton Taylor |

REVISIONS

| REVISION | DATE | DESCRIPTION |
|----------|------------|-----------------------|
| N/R | 11/01/2023 | PRELIM ROUGH |
| A | 11/09/2023 | FINAL |
| B | 12/10/2023 | VENUE MODIFICATIONS |
| C | 12/19/2023 | SET ELECTRIC TEMPLATE |
| D | 12/29/2023 | CHANNEL/CLEAN UP |
| E | 1/06/2024 | COLOR CLEAN UP |
| F | 1/13/2024 | AS BUILTS |

DETAIL

DRAWN BY: DZR+NRW
DATE: 1/31/2024
SCALE: 1/2" = 1'-0"



KEY

- ETC SOURCE4 10DEG @575W
- ETC SOURCE4 19DEG @575W
- ETC SOURCE4 26DEG @575W
- ETC SOURCE4 36DEG @575W
- ETC SOURCE4 36DEG @750W
- ETC SOURCE4 50DEG @575W
- ETC S4 19DEG LUSTR II @117W DIRECT MODE
- ETC S4 26DEG LUSTR II @117W DIRECT MODE
- CHAUVET OVATION E-F910FC 10CH MODE @225W
- CHAUVET OVATION C-640FC @175W R/A
- ETC D60 VIVID MEDIUM OVAL @161W DIRECT MODE
- ETC SOURCE4 PAR MCM MFL @575W
- ETC SOURCE4 PARNEL @575W
- HES STUDIO BEAM @700W
- HES SOLAFRAME 1000 @900W
- CHROMAQ COLORFORCE 72 @800W ARCH NEAR MODE
- BLUE ROPE LIGHT @10W
- ADAFRUIT NEOPIXEL FLEXIBLE 16x16 RGB LED MATRIX

LABEL LEGEND

- TOP HAT
- RIS
- TRUSS
- CHANNEL
- 7.5" BARRADOOR
- BOTTLE
- HALF HAT KEVLARISH
- 1/2" SIDE BAR

NOTES

- ALL UNITS ARE PLACED TO UNLESS NOTED OTHERWISE
- ALL UNITS ON RANCA TOWERS ARE HUNG ON 2'-6" CENTERS
- ALL TOPS OF UNITS ARE TAKEN FROM BOTTOM OF SYSTEM PIPE
- DANCE FLOOR/LAUNDRY/COVER COORDINATES ARE NOTED FROM CENTER
- PLEASE PROVIDE ELECTRICAL TAP, GAY TAPE, AND SPIKE TAPE
- LED SCENE FACE AWAY FROM THE AUDIENCE
- PLEASE PROVIDE SPARE RIG RIS, LAY, RISK, AND RISK
- PLEASE DRIP ALL COLOR, FROST, AND TEMPERATURE FROM TO FOCUS
- LAUNDERS ARE MEASURED FROM CENTER OF LAUNDER TO POINT OF CORRESPONDING TRUSS
- GREYED UNITS INDICATE UNACTIVE REF UNITS THAT WILL REMAIN IN SPACE
- DR RIGGING IS ONLY IN PLACE DURING ACT 1
- CLOUD DRIP REQUIRES SCENEY NUMBER
- ORIENT HALF HATS WITH BACKS TOWARD HOUSE

LIGHTING DESIGNER

DOMINICK ZAYNE RICHES
(818) 877-0337
riches.d@artist.uncsa.edu

THIS DRAWING REPRESENTS VISUAL AND CONSTRUCTION SUGGESTIONS ONLY. IT DOES NOT REPLACE THE KNOWLEDGE AND ADVICE OF A LICENSED STRUCTURAL ENGINEER. THE DESIGNER IS UNQUALIFIED TO DETERMINE THE STRUCTURAL OR ELECTRICAL APPROPRIATENESS OF THIS DESIGN AND WILL NOT ASSUME RESPONSIBILITY FOR IMPROPER ENGINEERING, CONSTRUCTION, HANDLING, OR USE. ALL MATERIALS AND CONSTRUCTION MUST COMPLY WITH THE MOST STRINGENT FEDERAL AND LOCAL FIRE, SAFETY, EROSION, AND ENVIRONMENTAL CODES.



HIGH POINT THEATRE

220 EAST COMMERCE AVE.
HIGH POINT, NORTH CAROLINA, 27261

PRODUCTION STAFF

| | |
|-----------------------------|-------------------|
| DIRECTOR | Steve LaCasse |
| PRODUCTION MANAGER | Carson Rainey |
| SCENIC DESIGNER | Nikolas Serrano |
| PRODUCTION STAGE MANAGER | Eva Hesse-Schramm |
| PRODUCTION ELECTRICIAN | Evie Nootenboom |
| E1 | George Janikula |
| E2 | Abby Bouck |
| ASSOCIATE LIGHTING DESIGNER | Noah Welby |
| PROGRAMMER | Harrison Reid |
| FACULTY ADVISOR | Clifton Taylor |

REVISIONS

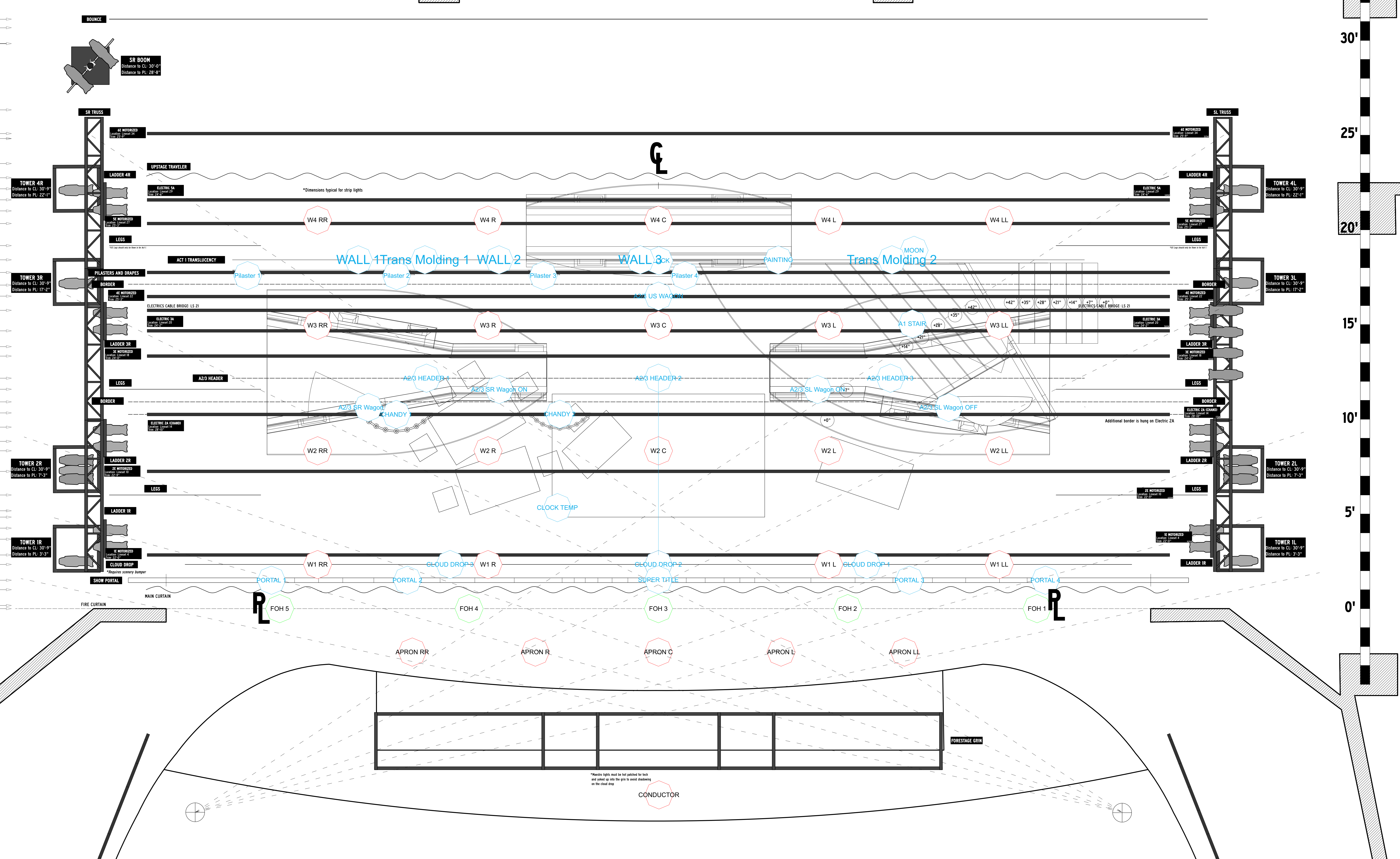
| REVISION | DATE | DESCRIPTION |
|----------|------------|----------------------------|
| N/R | 11/01/2023 | PRELIM ROUGH |
| A | 11/09/2023 | FINAL |
| B | 12/14/2023 | VENUE MODIFICATIONS |
| C | 12/29/2023 | SET ELECTRICAL/TEMPERATURE |
| D | 12/29/2023 | CHANNEL/CLEAN UP |
| E | 1/06/2024 | COLOR CLEAN UP |
| F | 1/10/2024 | AS BUILTS |

SECTION
DRAWN BY: DZR-NRW
DATE: 1/31/2024
SCALE: 1/2" = 1'-0"
4 OF 5

- ETC SOURCE4 10DEG @575W
- ETC SOURCE4 19DEG @575W
- ETC SOURCE4 26DEG @575W
- ETC SOURCE4 36DEG @575W
- ETC SOURCE4 36DEG @750W
- ETC SOURCE4 50DEG @575W
- ETC S4 19DEG LUSTRII @117W DIRECT MODE
- ETC S4 26DEG LUSTRII @117W DIRECT MODE
- CHAUVET OVATION E-F910FC @225W TECH MODE
- CHAUVET OVATION C-640FC @175W
- ETC D60 VIVID MEDIUM OVAL @161W DIRECT MODE
- ETC SOURCE4 PAR MCM MFL @575W
- ETC SOURCE4 PARNEL @575W
- HES STUDIO BEAM @700W
- HES SOLAFRAME 1000 @900W
- CHROMA COLORFORCE 72 @800W ARCH NEWM LIGHT
- BLUE ROPE LIGHT @10W
- ADAFRUIT NEOPIXEL FLEXIBLE 16x16 RGB LED MATRIX



| | | |
|----|--|---------|
| 38 | BOUNCE (HOUSE WHITE CYC MOTORIZED) | 31'-1" |
| 37 | MOTORIZED | 30'-8" |
| 36 | OPEN | 29'-10" |
| 35 | OPEN | 26'-4" |
| 34 | 6TH ELECTRIC "MOTORIZED" | 25'-1" |
| 33 | OPEN | 24'-10" |
| 32 | OPEN | 23'-6" |
| 31 | UPSTAGE TRAVELLER | 22'-9" |
| 30 | OPEN | 22'-2" |
| 29 | 5A ELECTRIC STRIP LIGHTS | 21'-7" |
| 28 | OPEN | 21' |
| 27 | 5TH ELECTRIC "MOTORIZED" | 20'-4" |
| 26 | BLACK LEGS (25'X11') | 19'-2" |
| 25 | ACT 1 TRANSLUCENCY | 18'-5" |
| 24 | ACT 1 PILASTERS AND DRAPES | 17'-9" |
| 23 | BLACK BORDER (9'X56') | 17'-1" |
| 22 | 4TH ELECTRIC "MOTORIZED" CABLE | 16'-6" |
| 21 | ELECTRICS CABLE BRIDGE | 15'-9" |
| 20 | ELECTRIC 3A | 14'-8" |
| 19 | MID STAGE TRAVELLER (NOT UTILIZED) | 13'-10" |
| 18 | 3RD ELECTRIC "MOTORIZED" STRIP LX | 13'-4" |
| 17 | ACT 2 + ACT 3 BORDER | 12'-2" |
| 16 | BLACK LEGS (25'X11') | 11'-7" |
| 15 | BLACK BORDER (9'X56') | 10'-11" |
| 14 | ELECTRIC 2A (CHANDELIERS) PIPE IN TRIM 25'x30' PIPE SIZES 3/8" 42'x30" | 10'-4" |
| 13 | OPEN | 9'-7" |
| 12 | OPEN | 8'-10" |
| 11 | MOVIE SCREEN | 8'-4" |
| 10 | 2ND ELECTRIC "MOTORIZED" | 7'-3" |
| 9 | BLACK LEGS (25'X11') | 6'-0" |
| 8 | OPEN | 5'-2" |
| 7 | OPEN | 4'-10" |
| 6 | OPEN | 4'-3" |
| 5 | OPEN | 3'-8" |
| 4 | 1ST ELECTRIC "MOTORIZED" | 2'-10" |
| 3 | CLOUD DROP | 2'-4" |
| 2 | PORTAL DROP | 1'-6" |
| 1 | MAIN CURTAIN BLUE | 1'-0" |
| | FIRE CURTAIN | 0'-2" |
| | PLASTER LINE | 0'-0" |



LABEL LEGEND

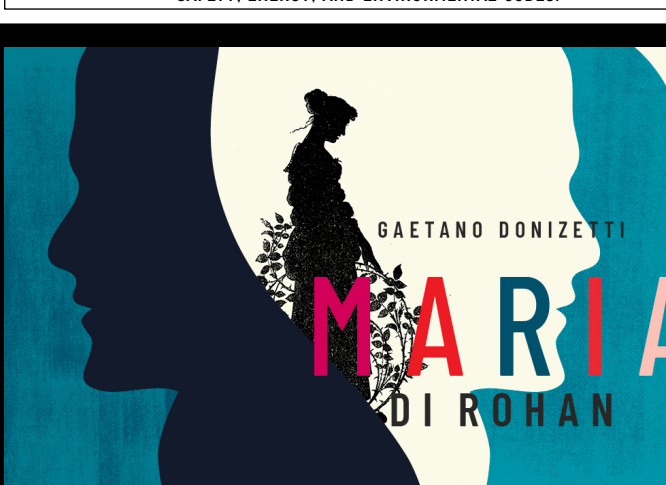
- TOP HAT
- IRIS
- UNIT NUMBER
- CHANNEL
- PRACTICAL
- 7.5' BARRIOUR
- BOTTLE
- HARD HAT EYEGLASS
- 7'x5' SIDE BAR

NOTES

- ALL UNITS ARE PLACED TO 1/8" UNLESS NOTED OTHERWISE
- ALL UNITS ON HANGS/TOWERS ARE HUNG ON 2'-6" CENTERS
- ALL TOWER UP BOTTOMS ARE TAKEN FROM BOTTOM OF SYSTEM PIPE
- DIMS: DIMENSIONS/LEVELS/COORDINATES ARE NOTED FROM CENTER
- PLEASE PROVIDE ELECTRICAL TAP, GAGE TAPE, AND SPICE TAPE
- LED SYSTEMS FACE AWAY FROM THE AUDIENCE
- PLEASE PROVIDE SPARE RIGS: RIGS, RIGS, AND RIGS
- PLEASE SHIP ALL COLOR, FRONT, AND TEMPLATES FROM TO FOCUS
- LADDERS ARE MEASURED FROM CENTER OF LADDER TO OS POINT OF CORRESPONDING TRUSS
- GREYED UNITS INDICATE UNACTIVE RIG UNITS THAT WILL REMAIN IN SPACE
- SR RIGS IS ONLY IN PLACE DURING ACT 1
- CLOUD DRAP REQUIRES SCENERY NUMBER
- ORIENT HALF HATS WITH BACKS TOWARD HOUSE

LIGHTING DESIGNER

DOMINICK ZAYNE RICHES
(818) 877-0337
riches.d@artlist.uncsa.edu



HIGH POINT THEATRE
220 EAST COMMERCE AVE.
HIGH POINT, NORTH CAROLINA, 27261

PRODUCTION STAFF

| | |
|-----------------------------|-------------------|
| DIRECTOR | Steve LaCasse |
| PRODUCTION MANAGER | Carson Ranney |
| SCENIC DESIGNER | Nikolas Serrano |
| PRODUCTION STAGE MANAGER | Eva Hesse-Schramm |
| PRODUCTION ELECTRICIAN | Evie Nootenboom |
| E1 | George Janikula |
| E2 | Abby Bouck |
| ASSOCIATE LIGHTING DESIGNER | Noah Welby |
| PROGRAMMER | Harrison Reid |
| FACULTY ADVISOR | Clifton Taylor |

REVISIONS

| REVISION | DATE | DESCRIPTION |
|----------|------------|----------------------|
| N/R | 11/01/2023 | PRELIM ROUGH |
| A | 11/03/2023 | FINAL |
| B | 12/10/2023 | VENUE MODIFICATIONS |
| C | 12/20/2023 | SET ELECTRICAL/PLANT |
| D | 12/29/2023 | CHANNEL/CLEAN UP |
| E | 1/06/2024 | COLOR CLEAN UP |
| F | 1/10/2024 | AS BUILTS |

GROUNDPLAN

DRAWN BY: DZR+NRW
DATE: 1/31/2024
SCALE: 1/2" = 1'-0"