

Winter Opera:
Maria Di Rohan

Lighting Design Research

Maria Di Rohan Lighting Summary

Major Themes: Desire, rivalry, deceit, deception, royalty, cruel destiny

Given Circumstances: Paris, France. 1630's during the reign of King Louis XIII.

Act I: Ground floor hall of the Louvre. Night.

- Progression from elegant night to gentle dawn
- Deep blue cyc with dominating moon key

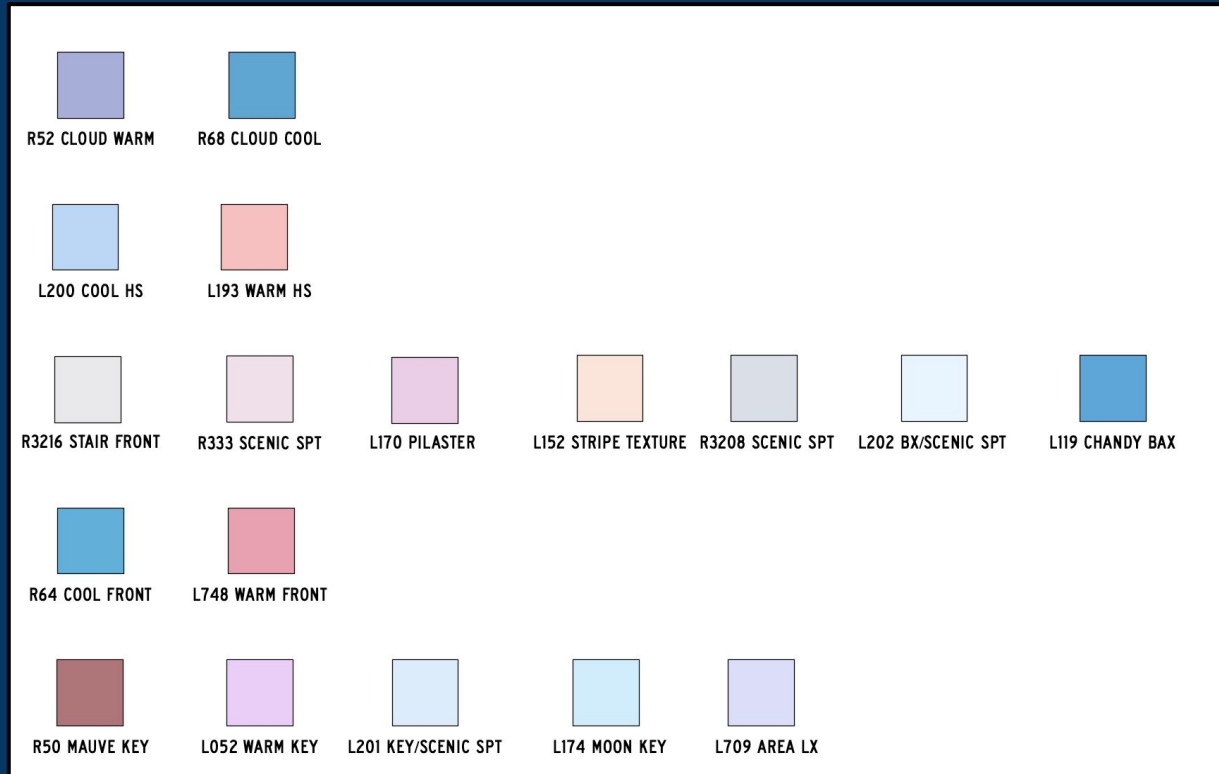
Act II: Room in Chalais' hotel

- Surrealist scenic highlights
- Clear/neutral area lighting
- Flickering fireplace

Act III: Hall in Chevreuse's hotel

- Mauve/rouge/dark rosy touch
- Line breakup
- Machiavellian red/Richelieu "Red Eminence"
 - "More important to be feared than to be loved"
- Dramatic progression
- Clock enhancement

Maria Di Rohan Color Palettes



ACT I

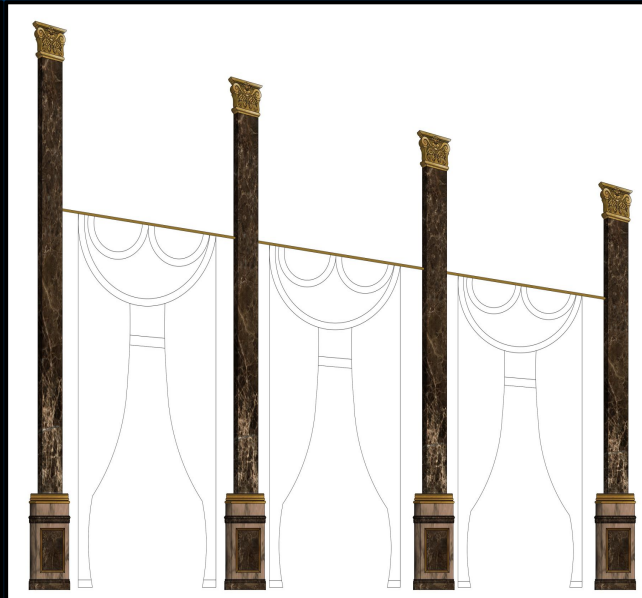
LIGHTING PLAN:

- Clear CTB key coming from SL
- Focal point on moon and stairway entrance.
- Light boosts out of the stairs. Something angelic is coming.
- Hazy
- Rich and saturate cyc to contrast with the key and moon.
- Beautifully back and side lit chandelier. Enhance and make crystals sparkle
- Chandelier and candelabra fire is an ornament to the act. Not the dominating key.
- All scenery pops. Especially the pilasters. They will stand out and have lots of dimension.

ACT I Rendering



Act I Scenery



Act I Scenery



Front Elevation



Stair Railing Elevation

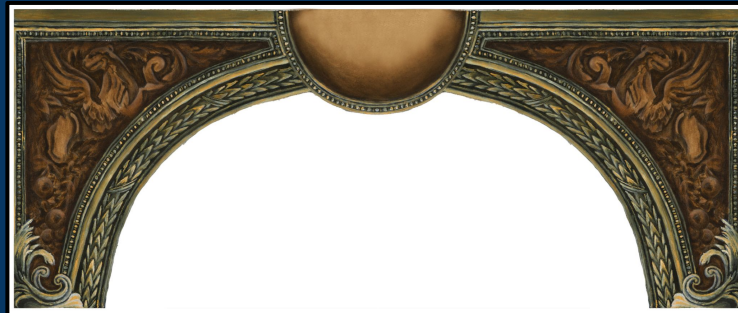


Plan Elevation

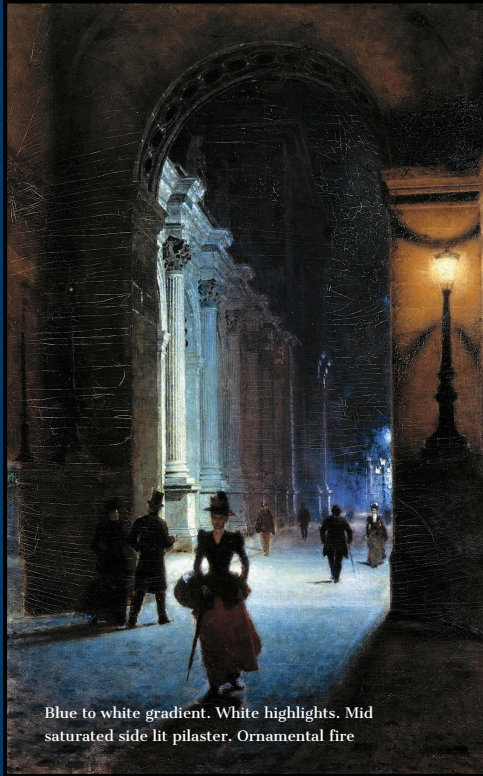


Wall Elevation

Show Portal/Drop



Act I Research Imagery



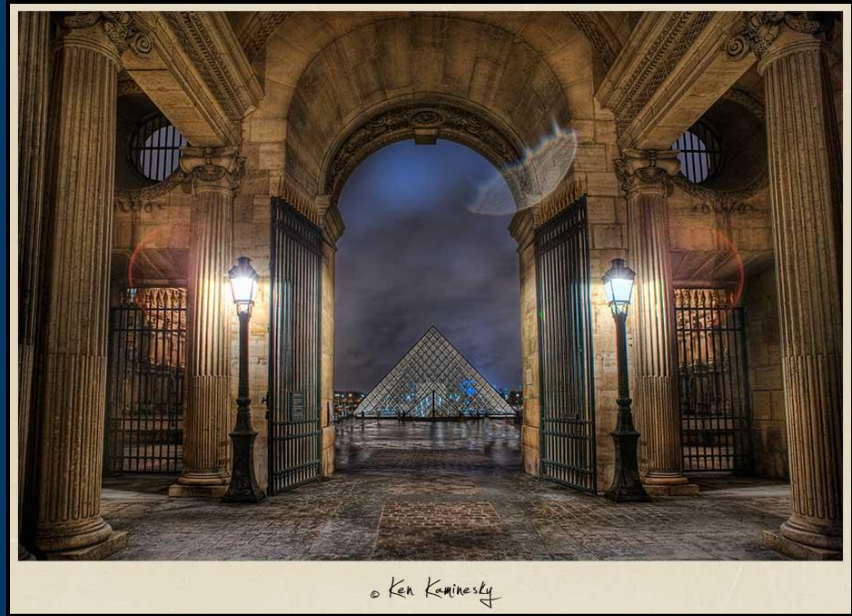
Act I Research Imagery



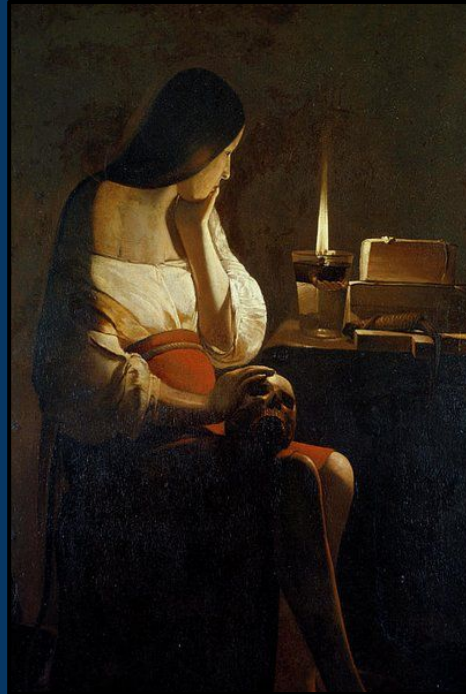
Act I Research Imagery



Act I Research Imagery



Act I Set Electrics



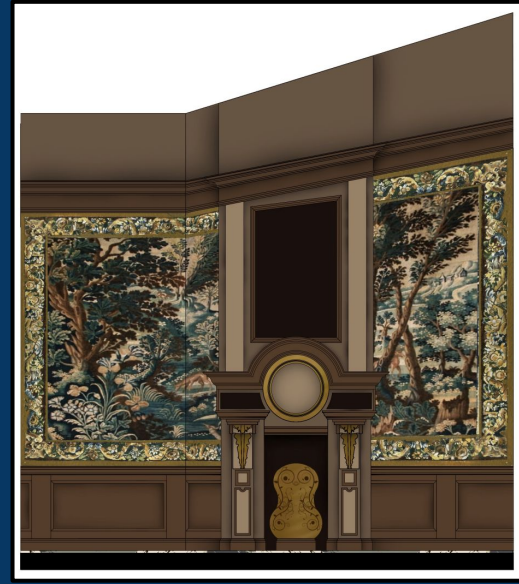
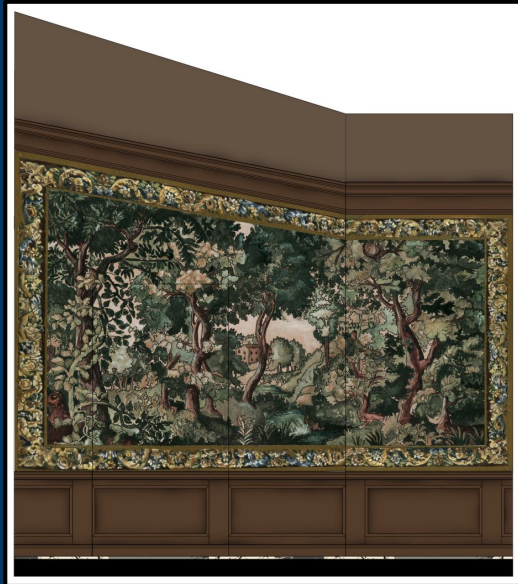
Present firelight used as an ornament. Key light is from a natural source. Clear open lighting.

ACT II

LIGHTING PLAN:

- Clear CTB key. Unified. Touch of violet coming from SR. SL stronger key
- Inside of fireplace lights up with fire pixel effects
- Inside of closet lights up. Becomes focal point at moments. Borderline surrealist.
- Warmer than Act I
- Most neutral act

Act II Scenery



Act II Research Imagery



Act II Research Imagery



Act II Research Imagery



ACT III

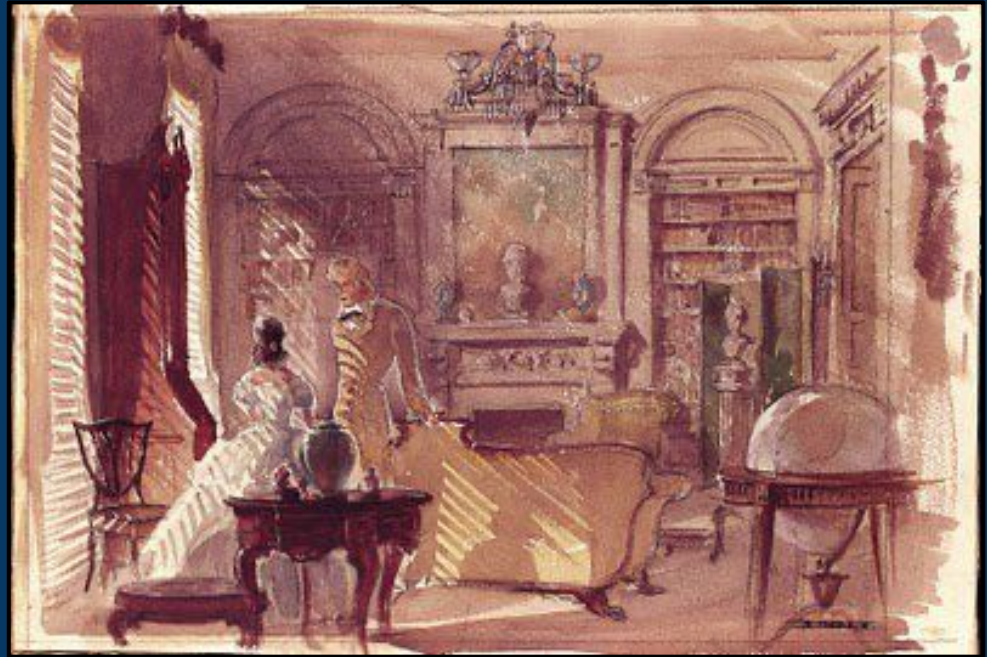
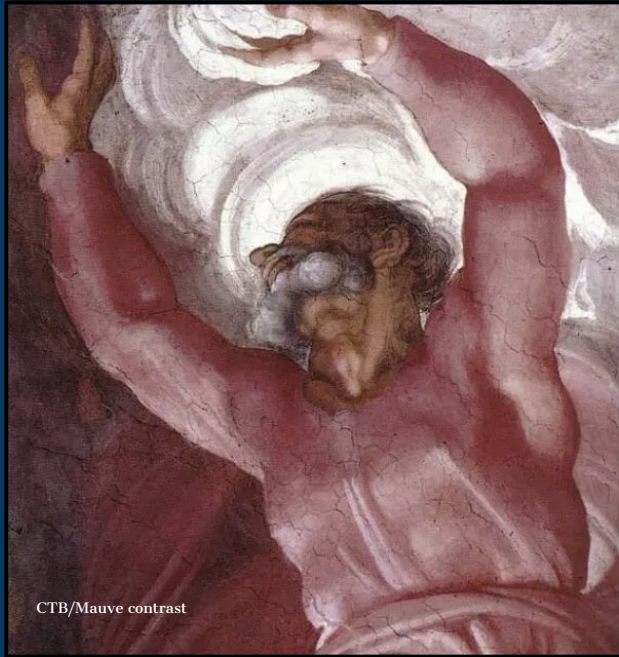
LIGHTING PLAN:

- Mauve/rouge lowlight
- Machiavellian red/Richelieu “Red Eminence”
- Dramatic progression
- Enhanced clock.
- Mauve CTB contrast
- Elegant mortality

Act III Scenery



Act III Research Imagery



Template look with mauve lowlight

Act III Research Imagery



Cruel destiny: moments of isolation, warmed by mauve, still natural

Act III: Red Eminence/Machiavellian Influence



Act III: Red Eminence/Machiavellian Influence



Mauve/CTB contrast

Act III Research Imagery

