

# 34.4	DEAD LINE SET	43
# 34.1	FIRST IMPULSE DROP	42
# 33.8	BOUNCE	41
# 33.3	BLACK BORDER	40
# 32.7		39
# 32.2		38
# 31.6		37
# 30.9		36
# 30.0	5TH HOUSE ELECTRIC	35
# 29.0	CYC (TRANSLUCENCY)	34
# 28.0	BLACK SCRIM	33
# 27.0	BLACK LEGS #4	32
# 26.0	4TH HOUSE ELECTRIC	31
# 25.0		30
# 24.0		29
# 23.0	ELECTRIC 3A	28
# 22.0		27
# 21.0	BLACK LEGS #3	26
# 20.0	BLACK BORDER	25
# 19.0		24
# 18.0		23
# 17.0	ELECTRIC 2A	22
# 16.0		21
# 15.0	RP SCREEN	20
# 14.0	BLACK LEGS #2	19
# 13.0	BLACK OUT CURTAIN (BORDER)	18
# 12.0	BLACK LEGS #1	17
# 11.0	2ND HOUSE ELECTRIC	16
# 10.0		15
# 9.0	ELECTRIC 1B	14
# 8.0		13
# 7.0	BLACK LEGS #1	12
# 6.0	BLACK BORDER	11
# 5.0	ELECTRIC 1A	10
# 4.0	MOVIE SCREEN	9
# 3.0	SHELL NO. 1	8
# 2.0	1ST HOUSE ELECTRIC	7
# 1.0	1ST BORDER	6
# 0	HOUSE GRAND DRAPE	5

ELECTRIC Trim heights measured from house deck bottom.  
SCENERY Trim heights measured from house deck bottom of piece.  
# Denotes electric winch batten.

### KEY

- ETC Source4 05deg @ 575w
- ETC Source4 10deg @ 575w
- ETC Source4 19deg @ 575w
- ETC Source4 26deg @ 575w
- ETC Source4 36deg @ 575w
- ETC Source4 50deg @ 575w
- ETC Source4 LEDLS 26deg @ 117w
- ETC Source4 LEDLS 36deg @ 117w
- HES Solawash 1000 @ 967w
- HES Solaframe 1000 @ 900w
- ETC Seldor Desire D60 Vvid LED - MR Lens @ 161w (Direct)
- ChromaQ Colorforce 72 - Cyc Lens @ 700w (x12 RGBA)
- Lycian 1000
- PAR WFL

### LABEL LEGEND

- PURPOSE: COLOR, US, CH
- SYMBOLS: EYELASH, TOP HAT

### NOTES

- All fixtures should be hung, cabled and working prior to focus.
- No substitutions or changes without the designers permission.
- Worklight per the Production Electrician.
- Please have spare R119 on hand for focus.
- Refer to Lightwright for fixture related information.
- All fixtures to be hung on 1'-0" centers unless otherwise noted.
- Please have black wrap available for focus.
- Ground row will be focused in space by designers.
- Explosives should be placed on the side of the light closest to the audience.

### LIGHTING DESIGNERS

**TAYLOR GORDON**  
(682) 251-5011  
gordon.ig@artist.uncsa.edu

**IZZY FLORES**  
(713) 724-0108  
flores.if@artist.uncsa.edu

**DOMINICK Z. RICHES**  
(818) 877-0337  
riches.d@artist.uncsa.edu



**PRODUCTION MANAGER** Kayli Kimerer  
**ASSOCIATE LD** Malcolm Foster  
**ASSISTANT LD** Bill Nowlin  
**PRODUCTION ELECTRICIAN** Jacob Grebber  
**HEAD ELECTRICIANS** Rocco Turano & Noelle Longenberger  
**DECK ELECTRICIANS** Trevor Kinschenheiter  
**PROGRAMMER** Greyson Nicholson

### REVISIONS

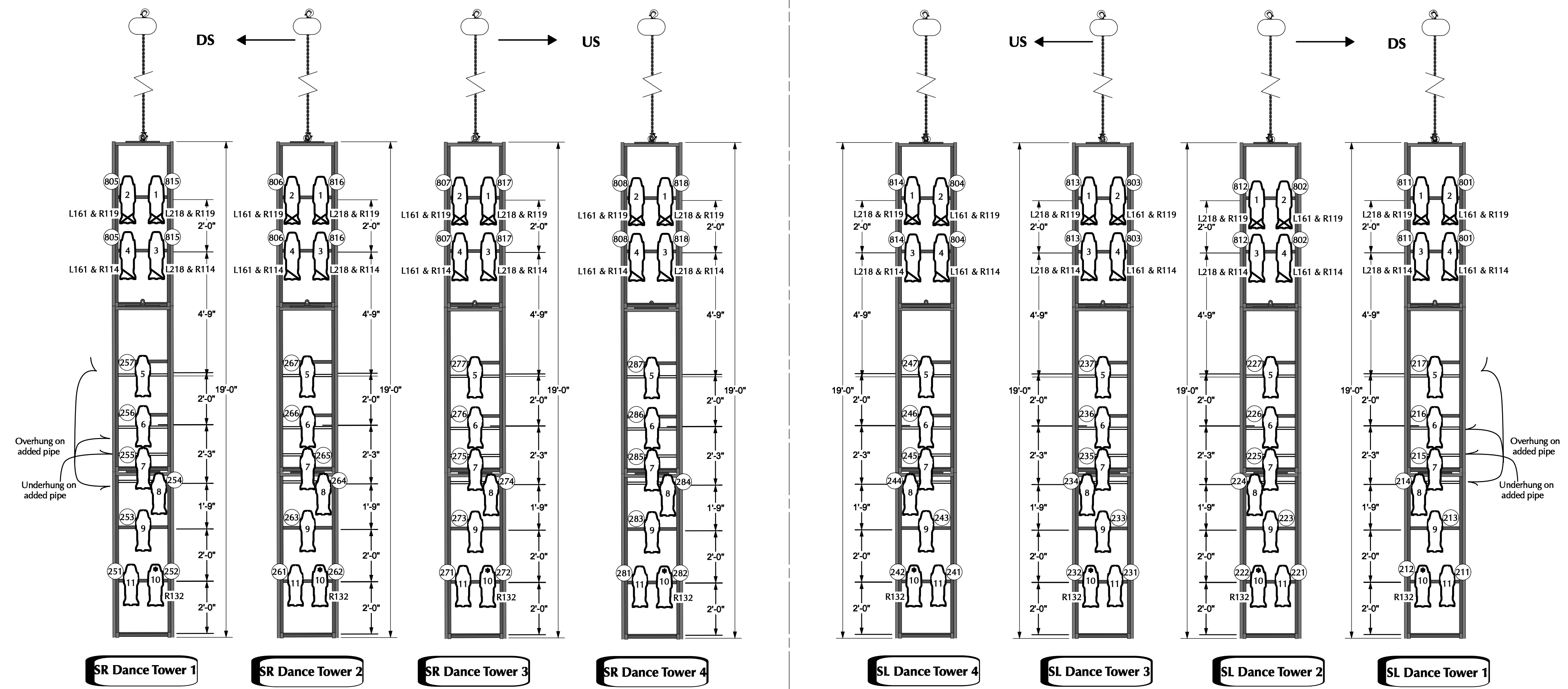
Revision	Date	Description
C	1/17/2023	Rough Plot
D	1/23/2023	Final Plot
E	1/30/2023	Final Plot/Notes
F	1/31/2023	Updated Tower Placement

### OVERSTAGE

DRAWN BY: Taylor Gordon, Izzy Flores, Dominick Riches  
DATE: 2/10/2023  
Scale: 1/2" = 1'-0"

1 OF 4

Dance Towers



### KEY

- ETC Source4 05deg @ 575w
- ETC Source4 10deg @ 575w
- ETC Source4 19deg @ 575w
- ETC Source4 26deg @ 575w
- ETC Source4 36deg @ 575w
- ETC Source4 50deg @ 575w
- ETC Source4 LEDLS 26deg @ 117w
- ETC Source4 LEDLS 36deg @ 117w
- HES Solawash 1000 @ 967w
- HES Solafame 1000 @ 900w
- ETC Selador Desire D60 VIVID LED - MR Lens @ 161w (Direct)
- ChromaQ Colorforce 72 - Cyc Lens @ 700w (x12 RGB)
- lycian 1000

### LABEL LEGEND

PURPOSE COLOR

- UV
- CH
- TO

### NOTES

- All fixtures should be hung, cabled and working prior to focus.
- No substitutions or changes without the designers permission.
- Worklight per the Production Electrician.
- Please have spare R19 on hand for focus.
- Refer to lightwright for fixture related information.
- All fixtures to be hung on 1'-0" centers unless otherwise noted.
- Please have black wrap available for focus.
- All fixtures on organ boom position should have half hats.
- Ground row will be focused in space by designers
- Eyeballs should be placed on the side of the light closest to the audience.

### LIGHTING DESIGNERS

**TAYLOR GORDON**  
(682) 251-5011  
gordon.ig@artist.uncsa.edu

**IZZY FLORES**  
(713) 724-0108  
flores.iz@artist.uncsa.edu

**DOMINICK Z. RICHES**  
(818) 877-0337  
riches.d@artist.uncsa.edu

**WINTER DANCE**

PRODUCTION MANAGER Kayli Kimmerer  
ASSOCIATE LD Malcolm Foster  
ASSISTANT LD Bill Nowlin  
PRODUCTION ELECTRICIAN Jacob Grebner  
HEAD ELECTRICIANS Rocco Turano & Noelle Longenberger  
DECK ELECTRICIAN Trevor Kinschenheiter  
PROGRAMMER Gresson Nicholson

### REVISIONS

Revision	Date	Description
C	1/17/2023	Rough Plot
D	1/23/2023	Final Plot
E	1/30/2023	Final Plot/Notes
F	1/31/2023	Updated Tower Placement

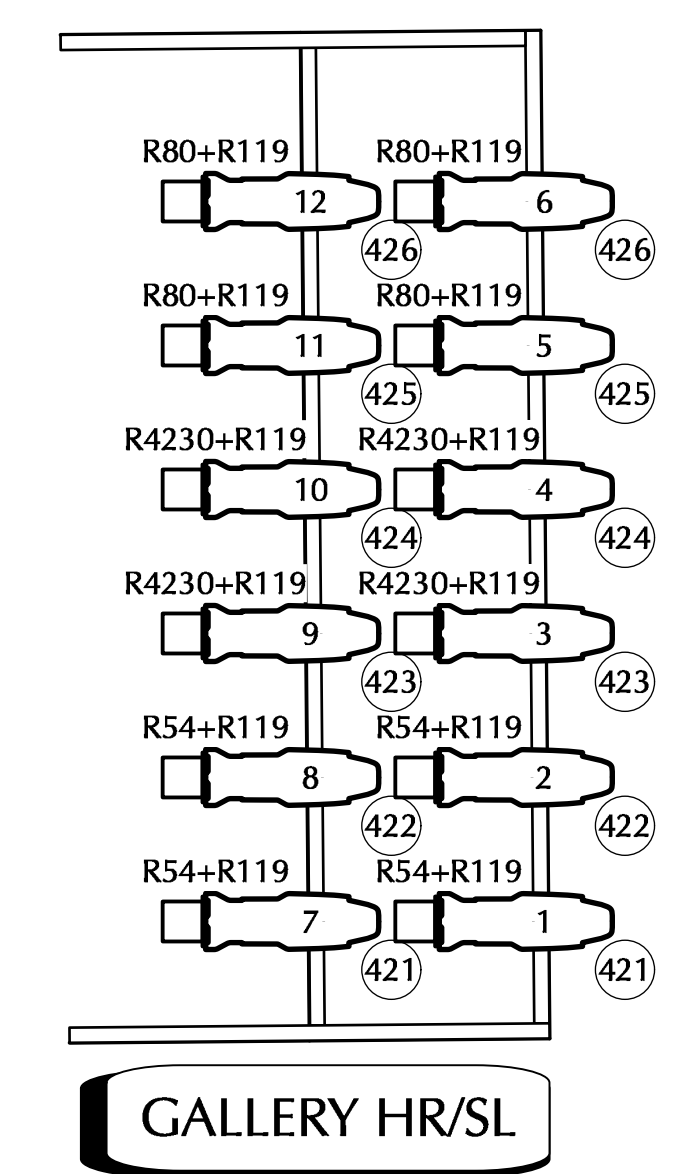
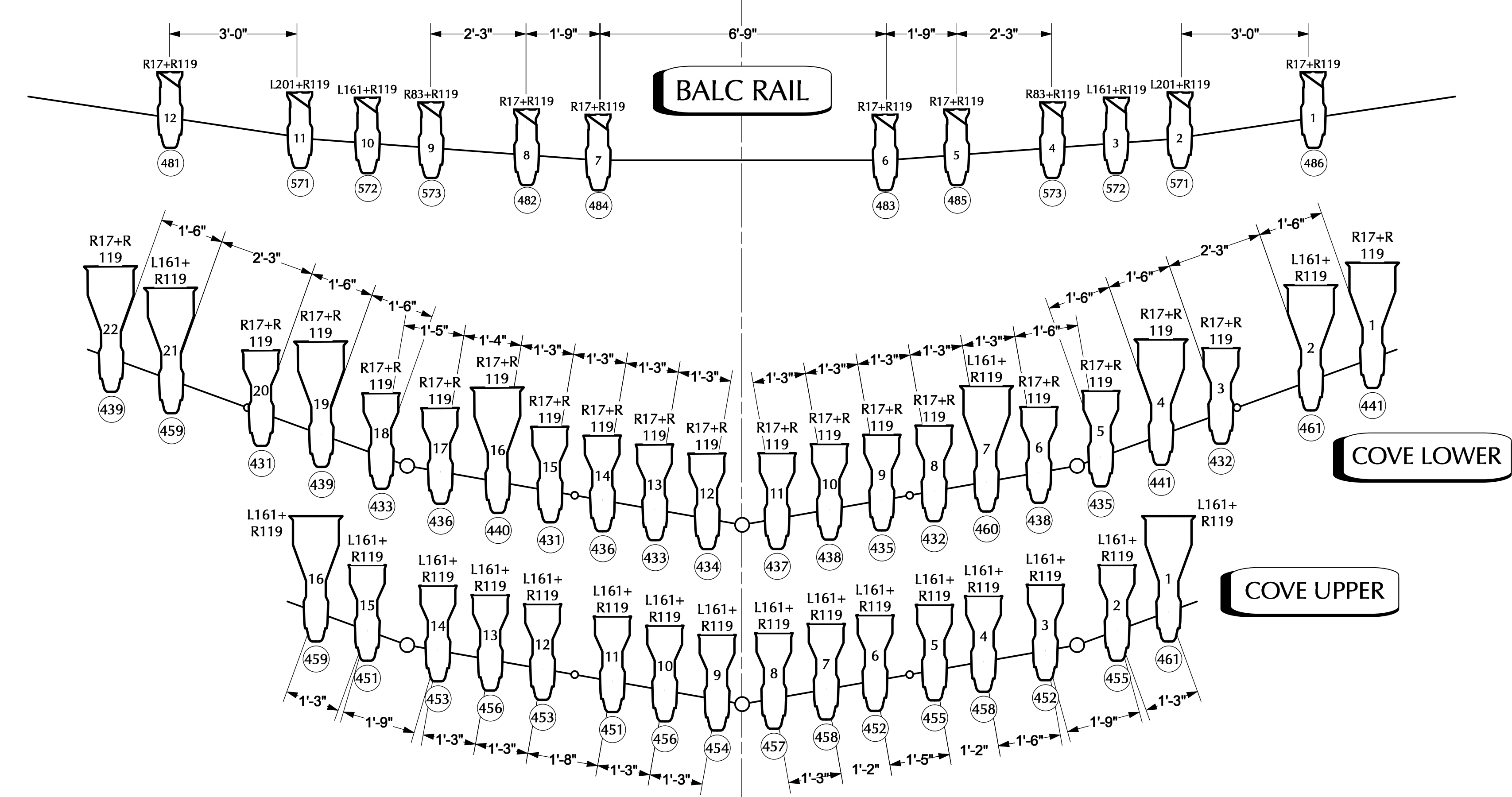
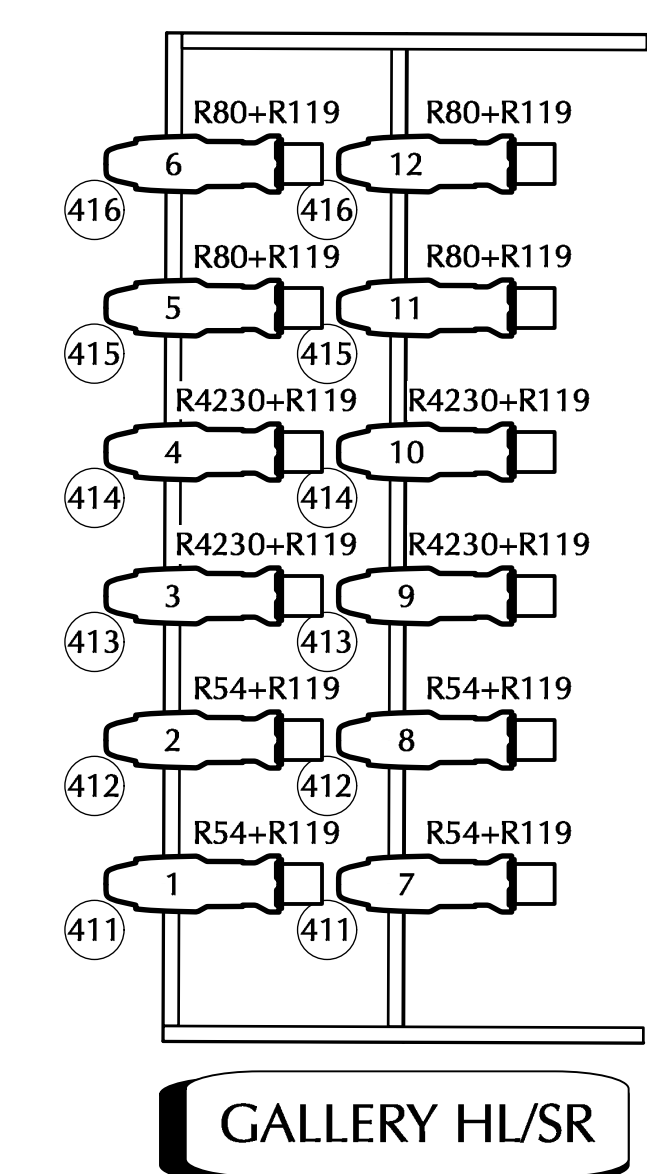
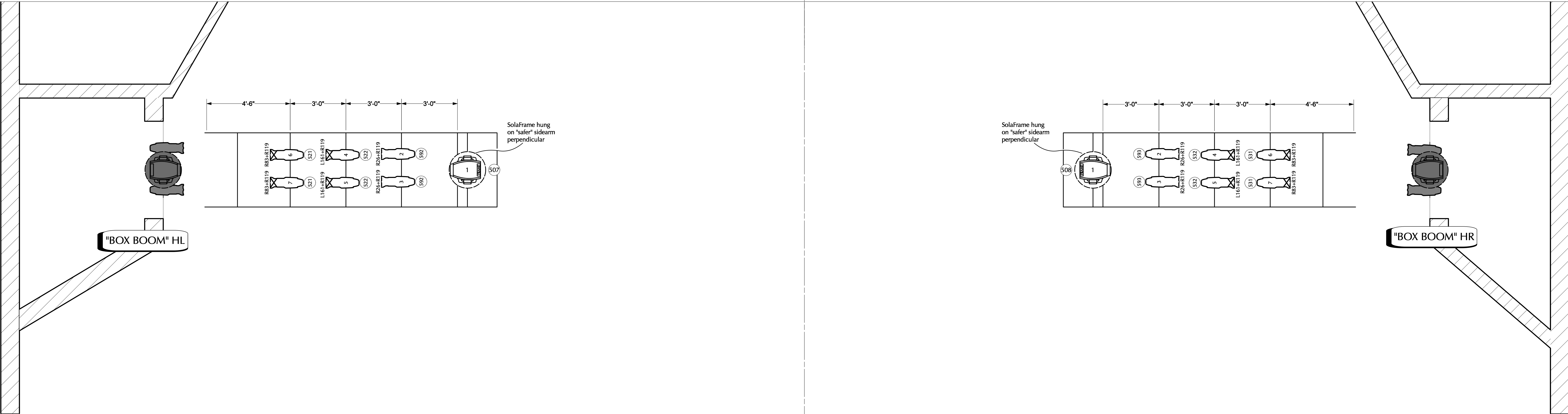
### FOH/ELEVATIONS

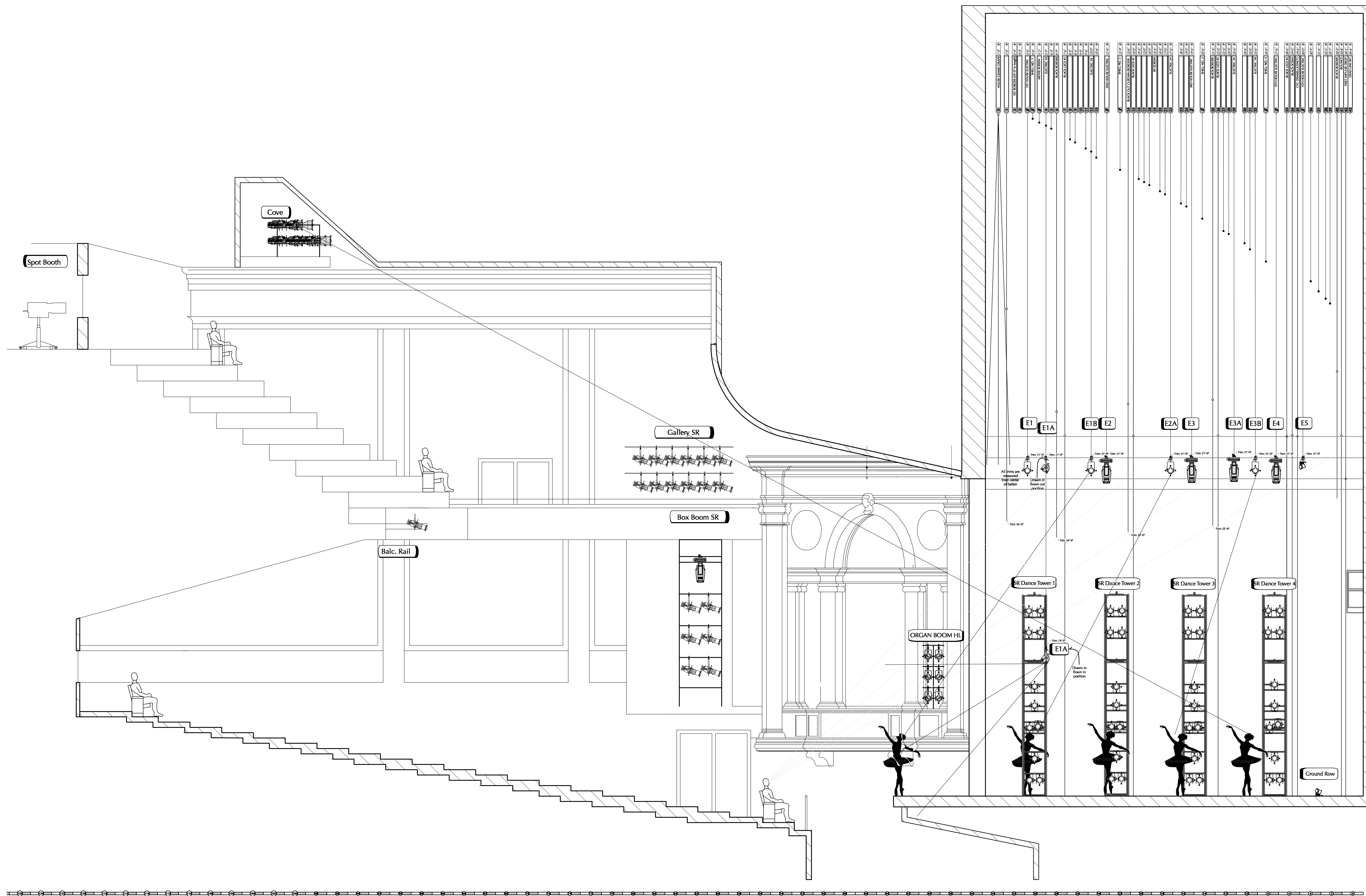
DRAWN BY: Taylor Gordon, Izzy Flores, Dominick Riches

DATE: 2/10/2023


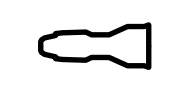









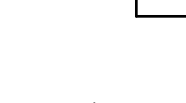
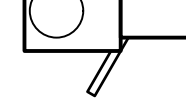
Scale: 1/2" = 1'-0"

2 OF 4

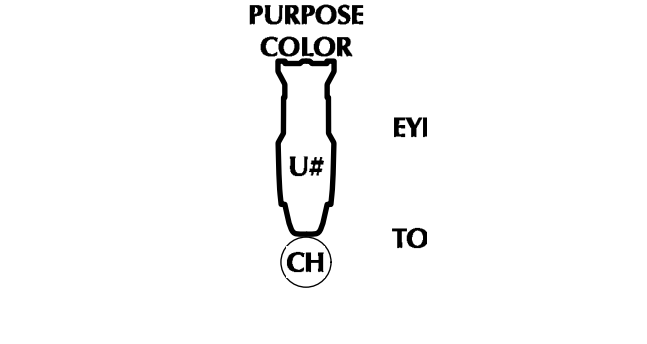




**KEY**

-  ETC Source4 05deg @ 575w
-  ETC Source4 10deg @ 575w
-  ETC Source4 19deg @ 575w
-  ETC Source4 26deg @ 575w
-  ETC Source4 36deg @ 575w
-  ETC Source4 50deg @ 575w
-  ETC Source4 LEDLS 26deg @ 117w
-  ETC Source4 LEDLS 36deg @ 117w
-  HES Solawash 1000 @ 967w
-  HES Solaframe 1000 @ 900w
-  ETC Sclador Desire D60 Vivid LED - MR Lens @ 161w (Direct)
-  ChromaQ Colorforce 72 - Cyc Lens @ 700w (x12 RGBA)
-  Lycian 1000

**LABEL LEGEND**



**NOTES**

- All fixtures should be hung, cabled and working prior to focus.
- No substitutions or changes without the designers permission.
- Worklight per the Production Electrician.
- Please have spare R19 on hand for focus.
- Refer to lightwright for fixture related information.
- All fixtures to be hung on 1'-0" centers unless otherwise noted.
- Please have black wrap available for focus.
- All fixtures on organ boom position should have half hats.
- Ground row will be focused in space by designers
- Eyelashes should be placed on the side of the light closest to the audience.

**LIGHTING DESIGNERS**

- TAYLOR GORDON**  
(682) 251-5011  
gordon.ig@artist.uncsa.edu
- IZZY FLORES**  
(713) 724-0108  
flores.iz@artist.uncsa.edu
- DOMINICK Z. RICHES**  
(818) 877-0337  
riches.d@artist.uncsa.edu



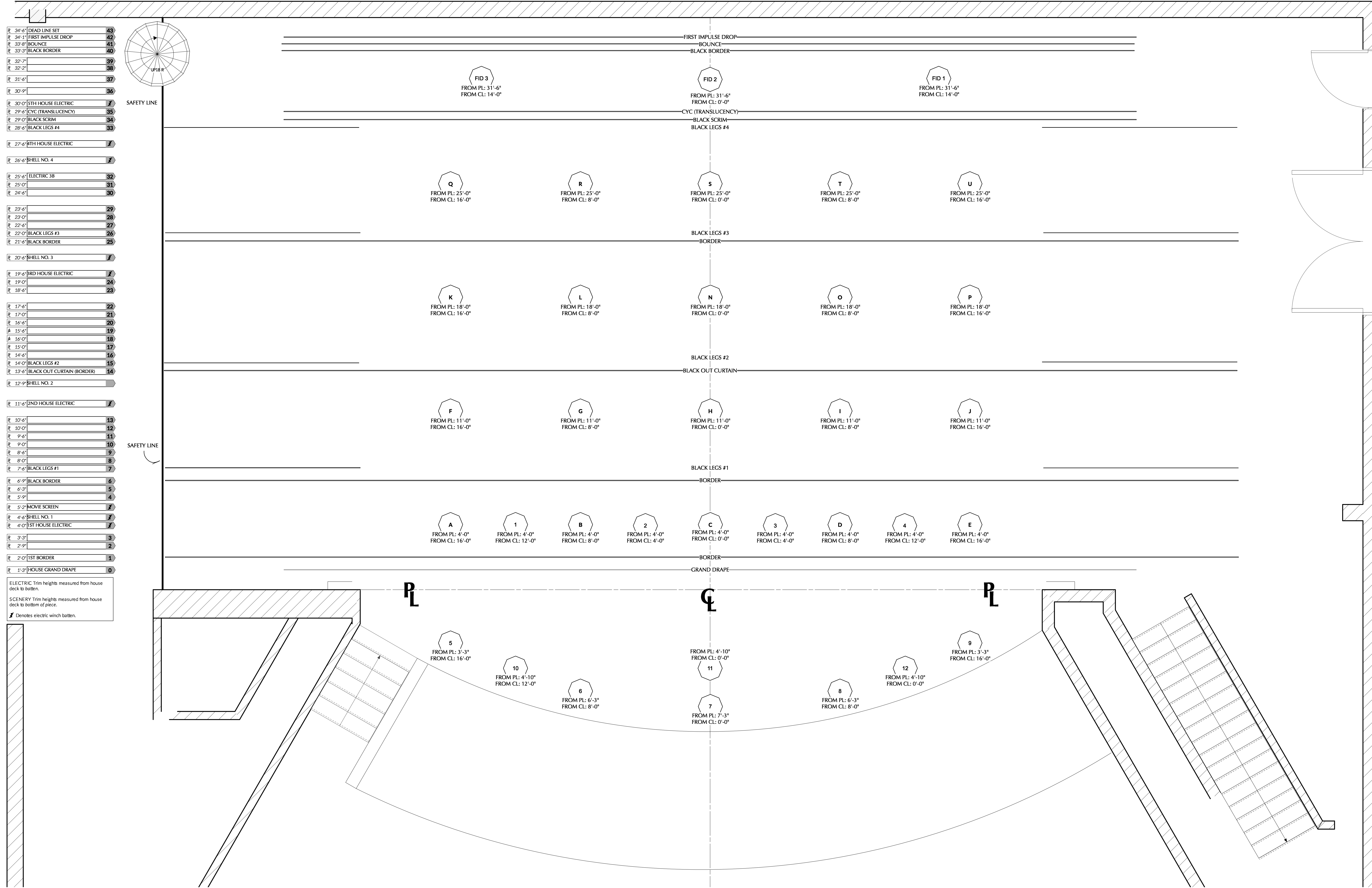
PRODUCTION MANAGER	Kayli Kimerer
ASSOCIATE LD	Malcolm Foster
ASSISTANT LD	Bill Nowlin
PRODUCTION ELECTRICIAN	Jacob Grebber
HEAD ELECTRICIANS	Rocco Turano & Noelle Longenberger
DECK ELECTRICIANS	Trevor Kirschenheiter
PROGRAMMER	Greysen Nicholson

**REVISIONS**

Revision	Date	Description
C	1/17/2023	Rough Plot
D	1/23/2023	Final Plot
E	1/30/2023	Final Plot/Notes
F	1/31/2023	Updated Tower Placement

**SECTION**

DRAWN BY:	Taylor Gordon Izzy Flores Dominick Riches	<b>3</b> OF <b>4</b>
DATE:	2/10/2023	
Scale:	1/4" = 1'0"	



34'-6"	DEAD LINE SET	43
34'-1"	FIRST IMPULSE DROP	42
33'-8"	BOUNCE	41
33'-3"	BLACK BORDER	40
32'-7"		39
32'-2"		38
31'-6"		37
30'-9"		36
30'-0"	5TH HOUSE ELECTRIC	35
29'-6"	CYC (TRANSLUCENCY)	35
29'-0"	BLACK SCRIM	34
28'-6"	BLACK LEGS #4	33
27'-6"	4TH HOUSE ELECTRIC	32
26'-6"	HELL NO. 4	31
25'-6"	ELECTRIC 3B	30
25'-0"		29
24'-6"		28
23'-6"		27
23'-0"		26
22'-6"	BLACK LEGS #3	25
21'-6"	BLACK BORDER	25
20'-6"	HELL NO. 3	24
19'-6"	BRD HOUSE ELECTRIC	23
19'-0"		22
18'-6"		21
17'-6"		20
17'-0"		19
16'-6"		18
15'-6"		17
15'-0"		16
14'-6"	BLACK LEGS #2	15
14'-0"	BLACK OUT CURTAIN (BORDER)	14
13'-6"	HELL NO. 2	13
12'-9"		12
12'-0"		11
11'-6"		10
11'-0"		9
10'-6"		8
10'-0"		7
9'-6"	BLACK LEGS #1	6
9'-0"	BLACK BORDER	5
8'-6"		4
8'-0"		3
7'-6"	MOVIE SCREEN	2
7'-0"	HELL NO. 1	1
6'-6"	1ST HOUSE ELECTRIC	1
6'-0"		1
5'-6"		1
5'-0"	1ST BORDER	1
4'-6"		1
4'-0"	HOUSE GRAND DRAPE	0

ELECTRIC Trim heights measured from house deck to bottom.  
SCENERY Trim heights measured from house deck to bottom of piece.  
# Denotes electric winch batten.

### KEY

	ETC Source4 05deg @ 575w
	ETC Source4 10deg @ 575w
	ETC Source4 19deg @ 575w
	ETC Source4 26deg @ 575w
	ETC Source4 36deg @ 575w
	ETC Source4 50deg @ 575w
	ETC Source4 LEDLS 26deg @ 117w
	ETC Source4 LEDLS 36deg @ 117w
	HES Solawash 1000 @ 967w
	HES Solaframe 1000 @ 900w
	ETC Soladur Desire D60 Vivid LED - MR Lens @ 161w (Direct)
	ChromaQ Colorforce 72 - Cyc Lens @ 700w (x12 RGBA)
	lycian 1000

### LABEL LEGEND

PURPOSE	COLOR
UPL	EN
CH	TO

### NOTES

- All fixtures should be hung, cabled and working prior to focus.
- No substitutions or changes without the designers permission.
- Worklight per the Production Electrician.
- Please have spare R19 on hand for focus.
- Refer to lightwright for fixture related information.
- All fixtures to be hung on 1'-6" centers unless otherwise noted.
- Please have black wrap available for focus.
- All fixtures on organ boom position should have half hats.
- Ground row will be focused in space by designers
- Eyeballs should be placed on the side of the light closest to the audience.

### LIGHTING DESIGNERS

**TAYLOR GORDON**  
(682) 251-5011  
gordon.ig@artist.uncsa.edu

**IZZY FLORES**  
(713) 724-0108  
flores.if@artist.uncsa.edu

**DOMINICK Z. RICHES**  
(818) 977-0337  
riches.d@artist.uncsa.edu



PRODUCTION MANAGER	Kayli Kimmerer
ASSOCIATE LD	Malcolm Foster
ASSISTANT LD	Bill Nowlin
PRODUCTION ELECTRICIAN	Jacob Grebber
HEAD ELECTRICIANS	Rocco Turano & Noelle Longenberger
DECK ELECTRICIANS	Trevor Kinschenheiter
PROGRAMMER	Greysen Nicholson

### REVISIONS

Revision	Date	Description
C	1/17/2023	Rough Plot
D	1/23/2023	Final Plot
E	1/30/2023	Final Plot/Notes
F	1/31/2023	Updated Tower Placement

### FOCUS POINTS

DRAWN BY:	Taylor Gordon Izzy Flores Dominick Riches	4
DATE:	2/10/2023	OF
Scale:	1/2" = 1'-0"	4