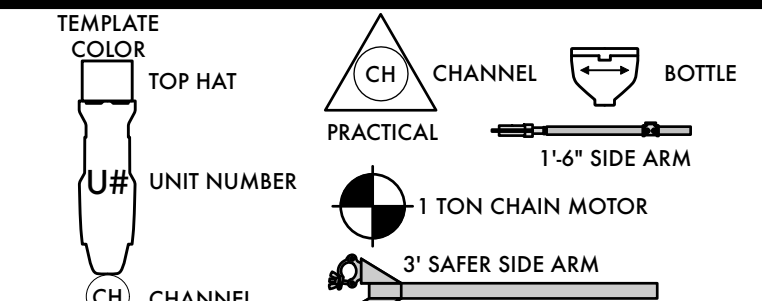


**KEY**

- ETC S4 19DEG @575W
- ETC S4 26DEG @575W
- ETC S4 36DEG @575W
- ETC S4 50DEG @575W
- ETC S4 JR 25-50DEG @575W
- ETC S4 LED II 36DEG @117W DIRECT STROBE MODE
- ETC S4 LED II 50DEG @117W DIRECT STROBE MODE
- ETC S4 PAR MCM XWFL @575W
- HES SOLAWASH 1000 @967W STANDARD 917W MODE
- HES SOLAFRAME 1000 @967W STANDARD 917W MODE
- MDG ATME @715W

**LABEL LEGEND**



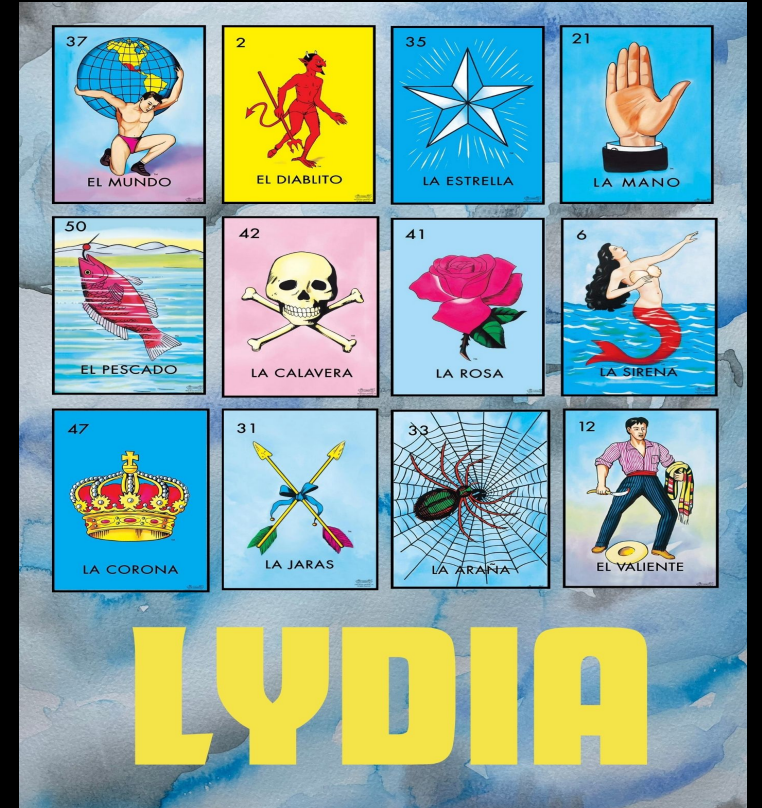
**NOTES**

- ALL UNITS ARE PLACED 1'-6" UNLESS NOTED OTHERWISE.
- ALL TAILDOWNS MUST BE SUPPORTED WITH RIGID CHESBOROUGH'S AND SUPPORT PIPES.
- ALL UNITS ON TAILDOWNS MUST BE EQUIPPED WITH TOP HATS OR COLOR EXTENDERS. SEE DETAIL PLATE.
- PLEASE PROVIDE ELECTRICAL TAPE, GAFF TAPE, AND SPIKE TAPE.
- LCD SCREENS FACE AWAY FROM THE AUDIENCE.
- PLEASE PROVIDE SPARE R119, R132, L269.
- PLEASE DROP ALL COLOR, FROST, AND TEMPLATES PRIOR TO FOCUS.
- BE SAFE, ASK QUESTIONS!

**LIGHTING DESIGNER**

**DOMINICK ZAYNE RICHES**  
 (818) 877-0337  
 riches.d@artist.uncsa.edu

THIS DRAWING REPRESENTS VISUAL AND CONSTRUCTION SUGGESTIONS ONLY. IT DOES NOT REPLACE THE KNOWLEDGE AND ADVICE OF A LICENSED STRUCTURAL ENGINEER. THE DESIGNER IS UNQUALIFIED TO DETERMINE THE STRUCTURAL OR ELECTRICAL APPROPRIATENESS OF THIS DESIGN, AND WILL NOT ASSUME RESPONSIBILITY FOR IMPROPER ENGINEERING, CONSTRUCTION, HANDLING, OR USE. ALL MATERIALS AND CONSTRUCTION MUST COMPLY WITH THE MOST STRINGENT FEDERAL AND LOCAL FIRE, SAFETY, ENERGY, AND ENVIRONMENTAL CODES.



DIRECTOR	Quin Gordon
PRODUCTION MANAGER	Carson Rainey
SCENIC DESIGNER	Bridgette Tran
ASSISTANT LD	Jade Caric
PRODUCTION ELECTRICIAN	Ashley Spear
MASTER ELECTRICIAN	Noah Welby
PROGRAMMER	Garrett Deutsch
TECHNICAL DIRECTOR	Chase Deitrich

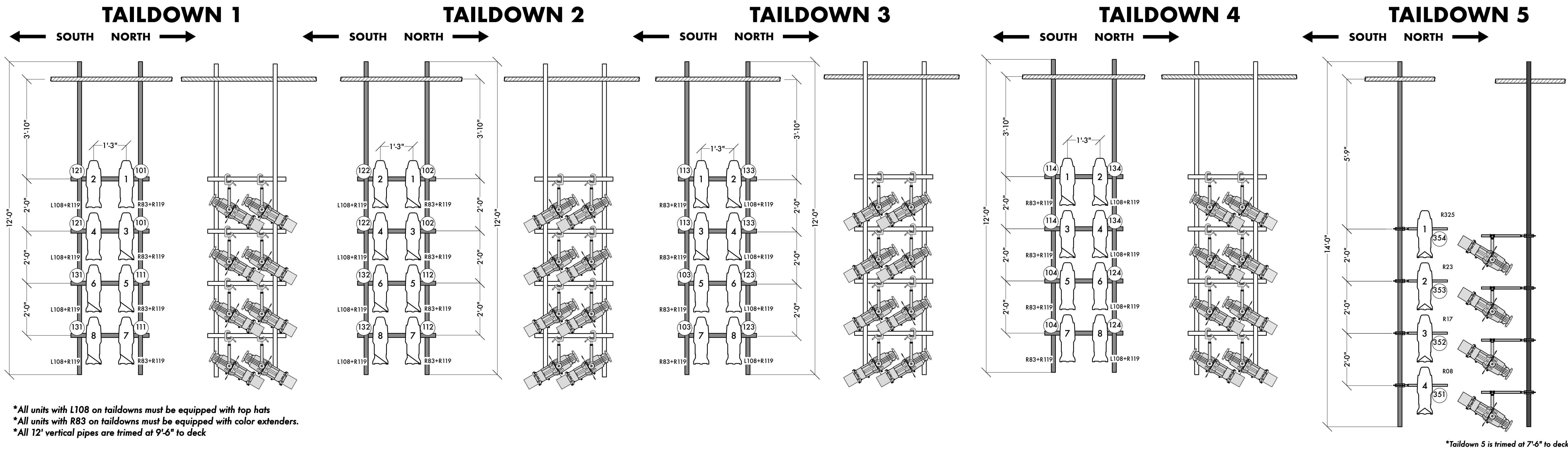
**REVISIONS**

REVISION	DATE	DESCRIPTION
A	08/23/2023	ROUGH
B	08/25/2023	ROUGH FOR AUDIO
C	08/28/2023	FINAL
D	08/31/2023	TRUSS UPDATES
E	09/29/2023	AS BUILT

**OVERSTAGE**

DRAWN BY: Dominick Riches  
 DATE: 9/29/2023  
 Scale: 1/2" = 1'-0"

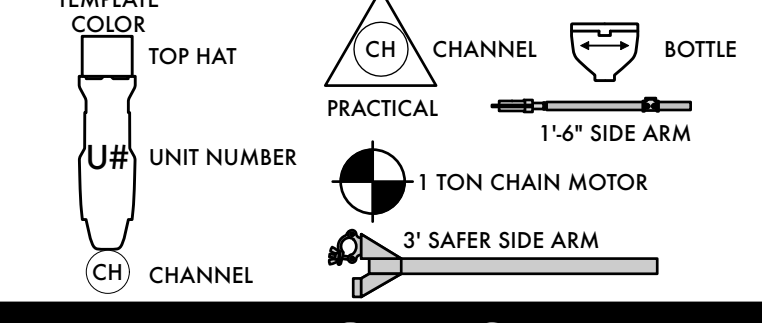




**KEY**

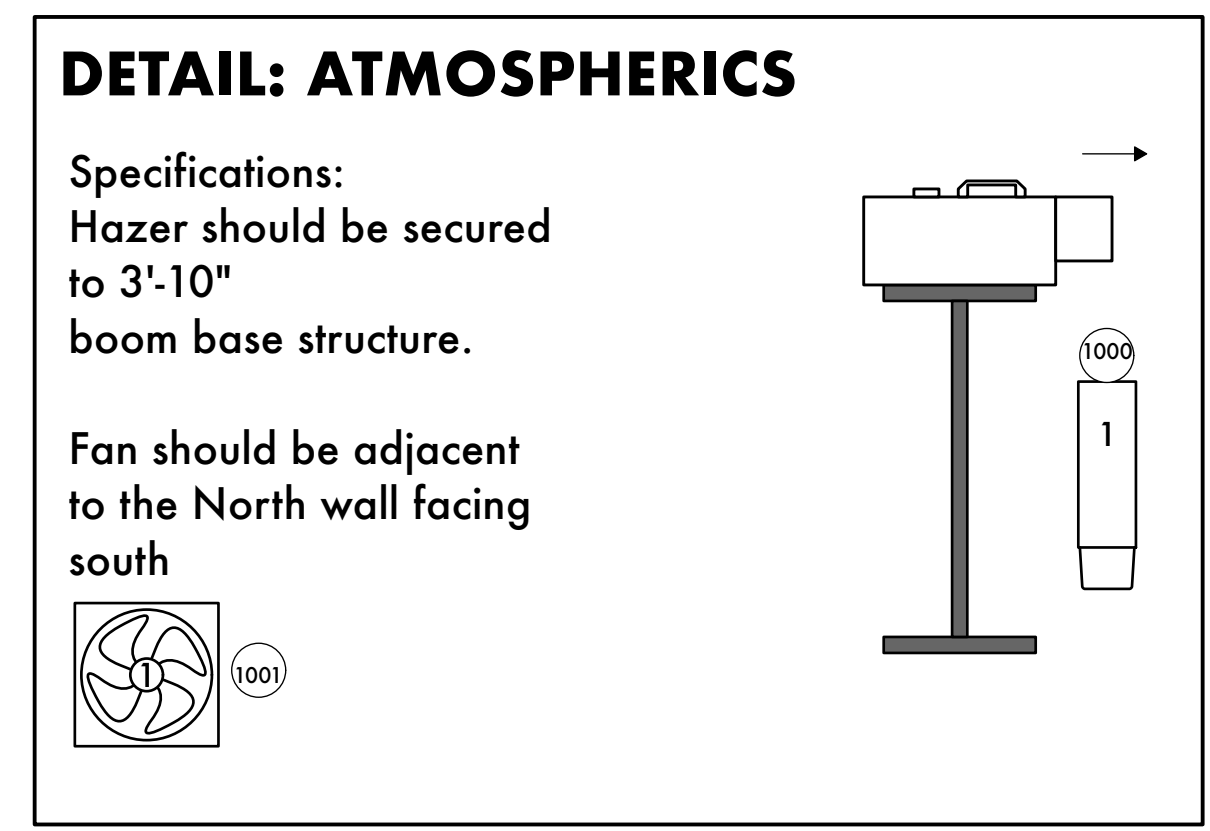
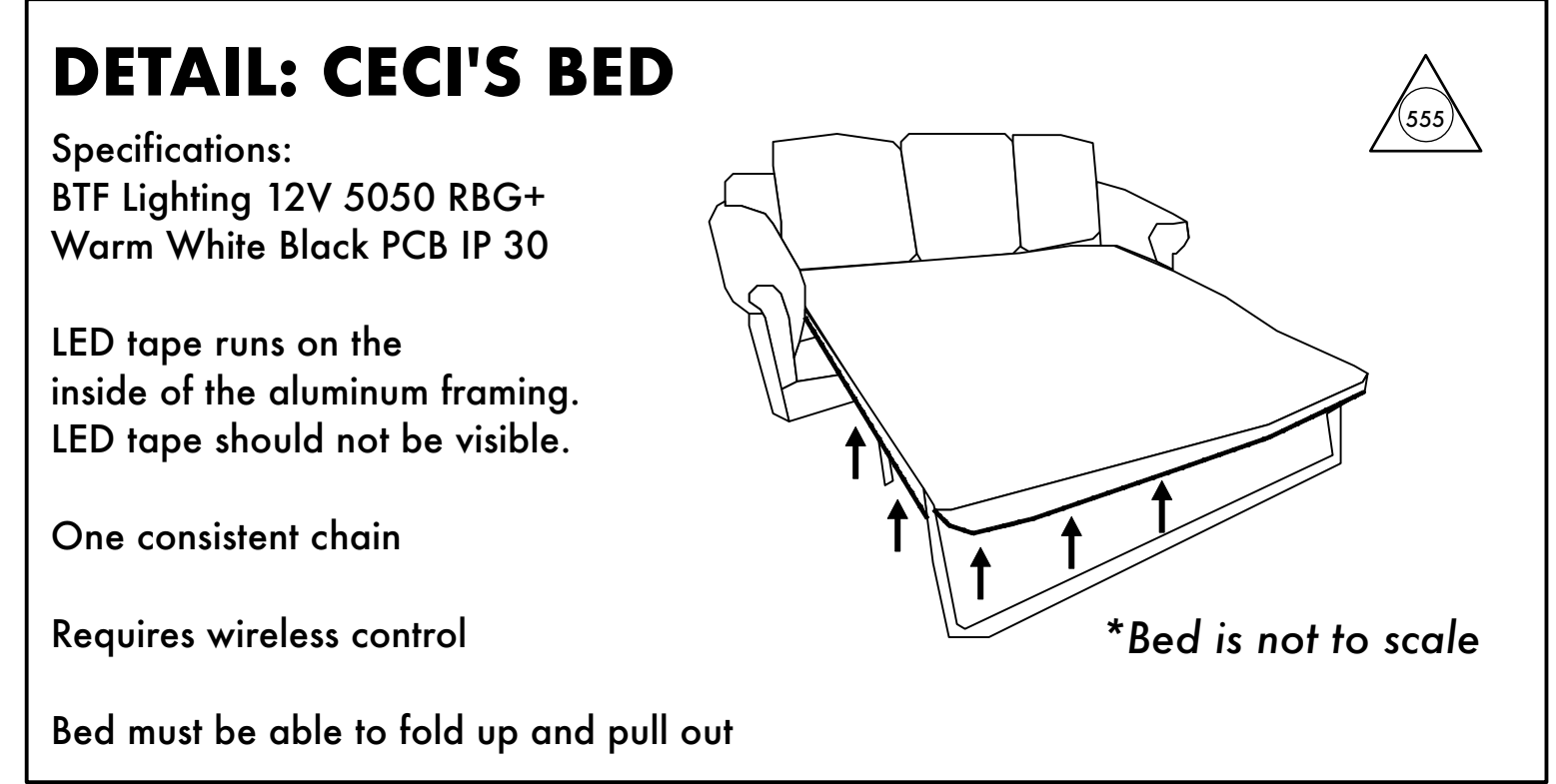
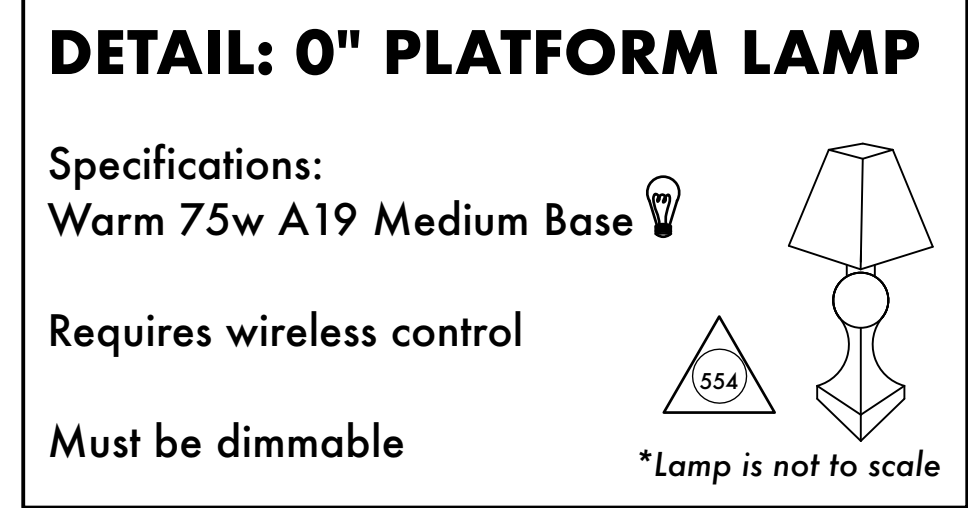
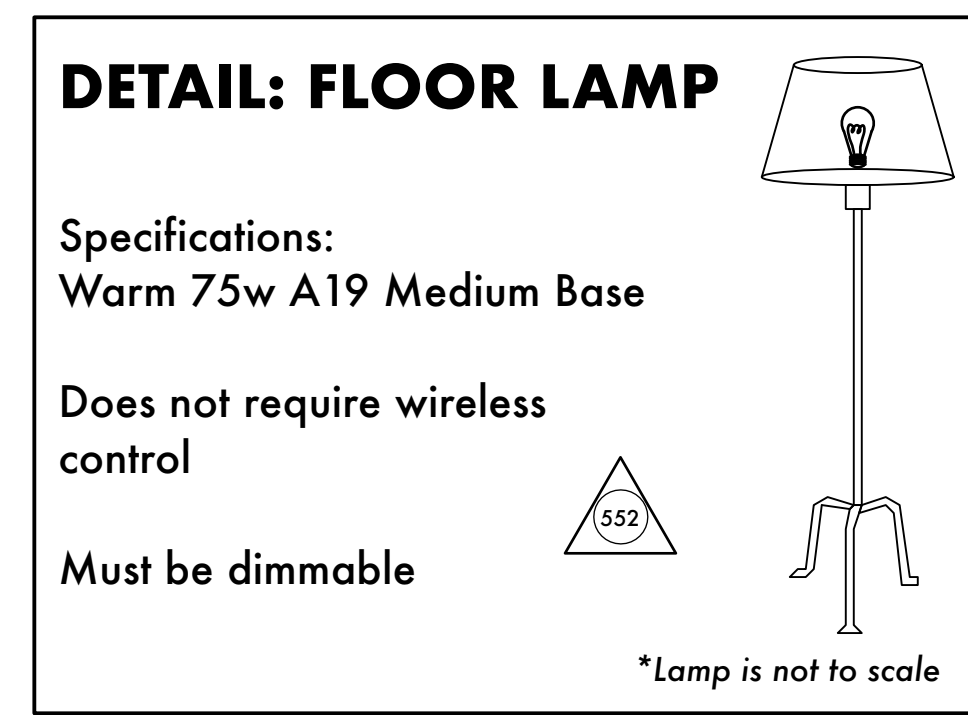
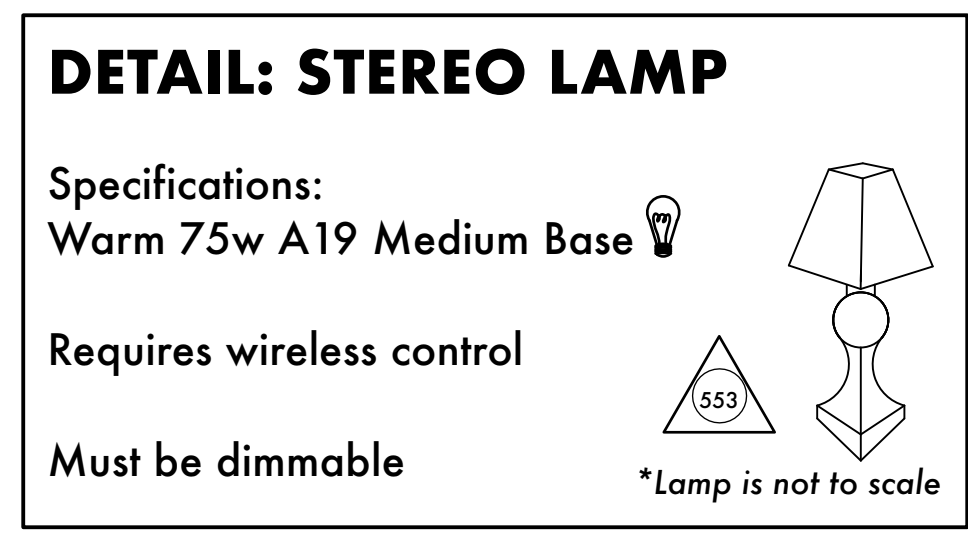
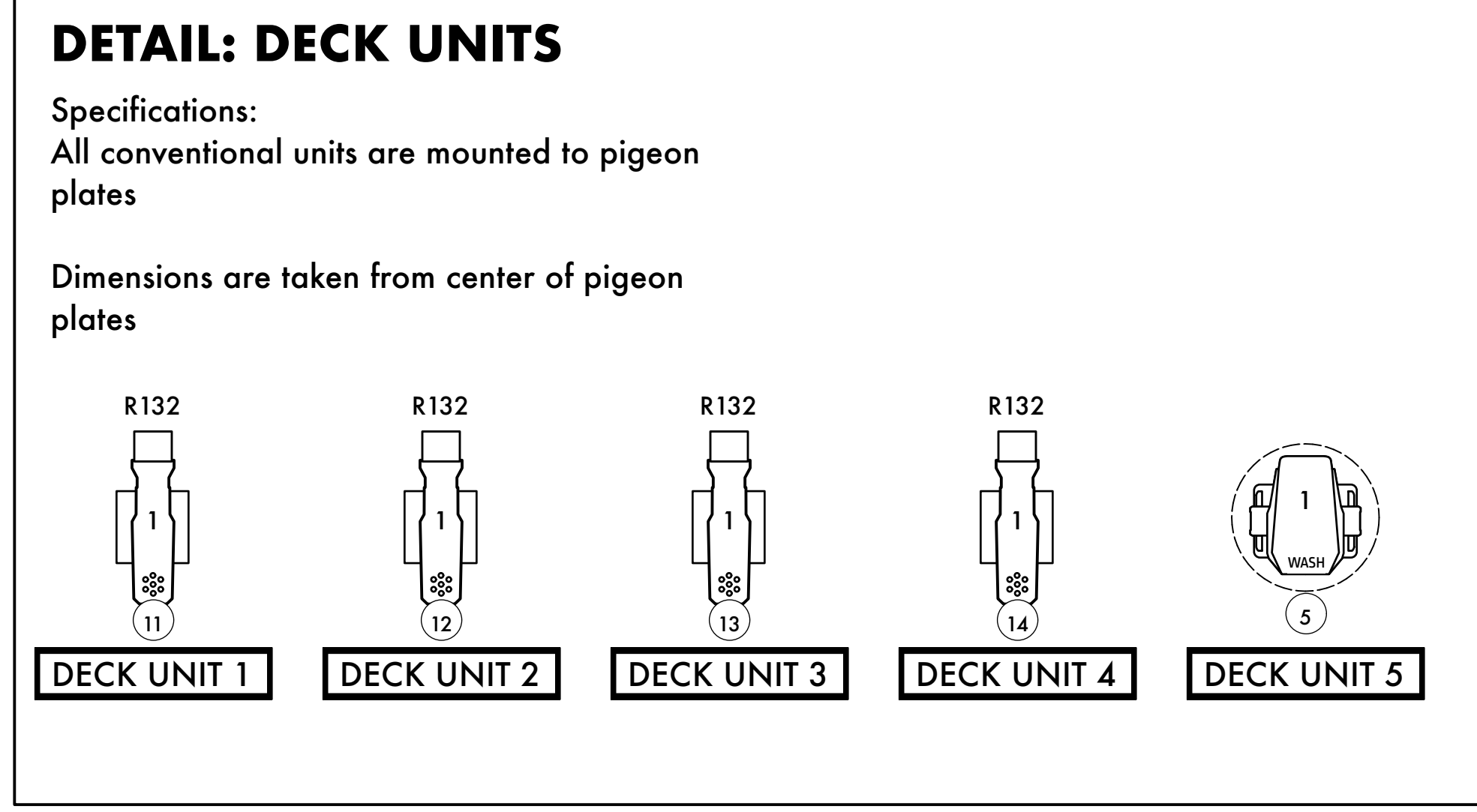
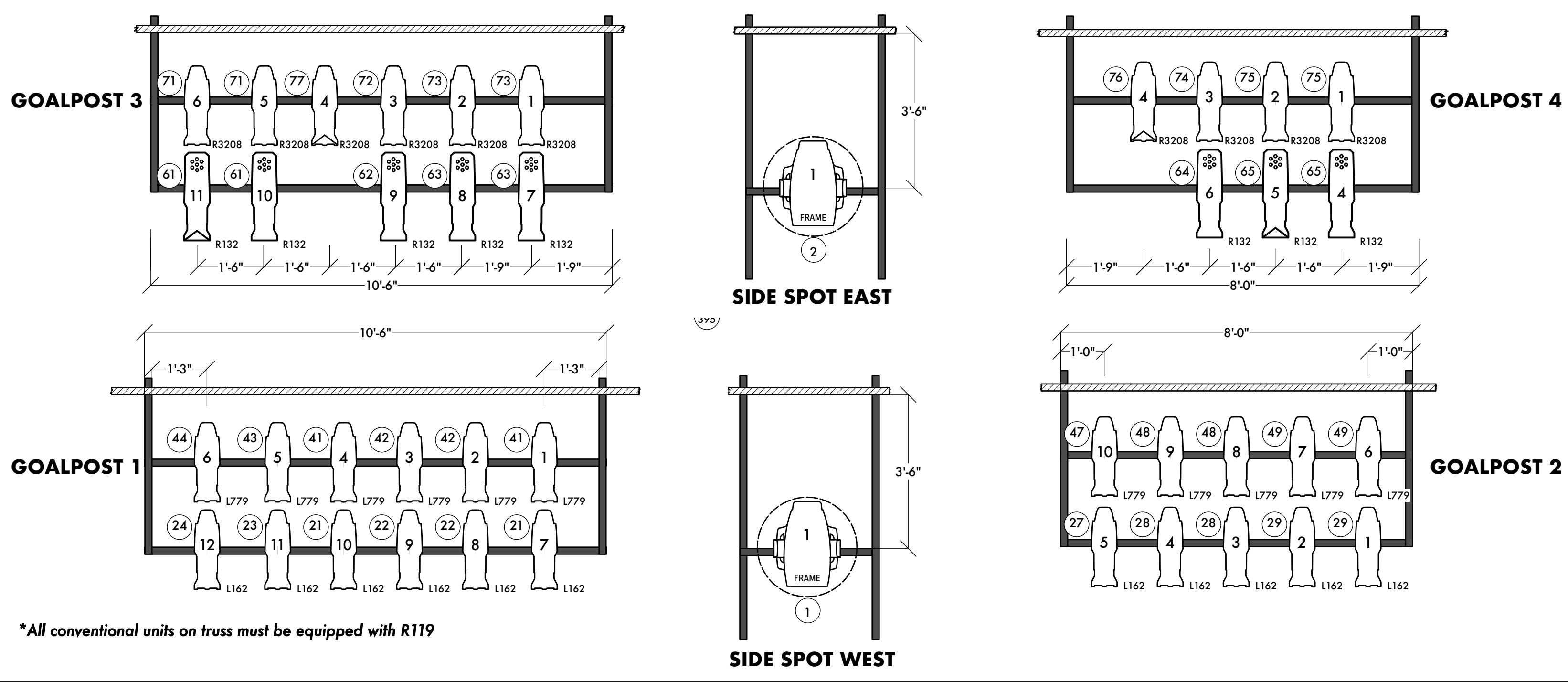
- ETC S4 19DEG @575W
- ETC S4 26DEG @575W
- ETC S4 36DEG @575W
- ETC S4 50DEG @575W
- ETC S4 JR 25-50DEG @575W
- ETC S4 LED II 36DEG @117W DIRECT STROBE MODE
- ETC S4 LED II 50DEG @117W DIRECT STROBE MODE
- ETC S4 PAR MCM XWFL @575W
- HES SOLAWASH 1000 @967W STANDARD 917W MODE
- HES SOLAFRAME 1000 @967W STANDARD 917W MODE
- MDG ATME @715W

**LABEL LEGEND**



**NOTES**

- ALL UNITS ARE PLACED 1'-6" UNLESS NOTED OTHERWISE.
- ALL TAILDOWNS MUST BE SUPPORTED WITH RIGID CHESBOROUGH'S AND SUPPORT PIPES
- ALL UNITS ON TAILDOWNS MUST BE EQUIPPED WITH TOP HATS OR COLOR EXTENDERS. SEE DETAIL PLATE.
- PLEASE PROVIDE ELECTRICAL TAPE, GAFF TAPE, AND SPIKE TAPE
- LCD SCREENS FACE AWAY FROM THE AUDIENCE
- PLEASE PROVIDE SPARE R119, R132, L269
- PLEASE DROP ALL COLOR, FROST, AND TEMPLATES PRIOR TO FOCUS
- BE SAFE, ASK QUESTIONS !:



**LIGHTING DESIGNER**

**DOMINICK ZAYNE RICHES**  
 (818) 877-0337  
 riches.d@artist.unca.edu

THIS DRAWING REPRESENTS VISUAL AND CONSTRUCTION SUGGESTIONS ONLY. IT DOES NOT REPLACE THE KNOWLEDGE AND ADVICE OF A LICENSED STRUCTURAL ENGINEER. THE DESIGNER IS UNQUALIFIED TO DETERMINE THE STRUCTURAL OR ELECTRICAL APPROPRIATENESS OF THIS DESIGN, AND WILL NOT ASSUME RESPONSIBILITY FOR IMPROPER ENGINEERING, CONSTRUCTION, HANDLING, OR USE. ALL MATERIALS AND CONSTRUCTION MUST COMPLY WITH THE MOST STRINGENT FEDERAL AND LOCAL FIRE, SAFETY, ENERGY, AND ENVIRONMENTAL CODES.



**LYDIA**

DIRECTOR: Quin Gordon  
 PRODUCTION MANAGER: Carson Rainey  
 SCENIC DESIGNER: Bridgette Tran  
 ASSISTANT LD: Jade Caric  
 PRODUCTION ELECTRICIAN: Ashley Spear  
 MASTER ELECTRICIAN: Noah Welby  
 PROGRAMMER: Garrett Deutsch  
 TECHNICAL DIRECTOR: Chase Deitrich

**REVISIONS**

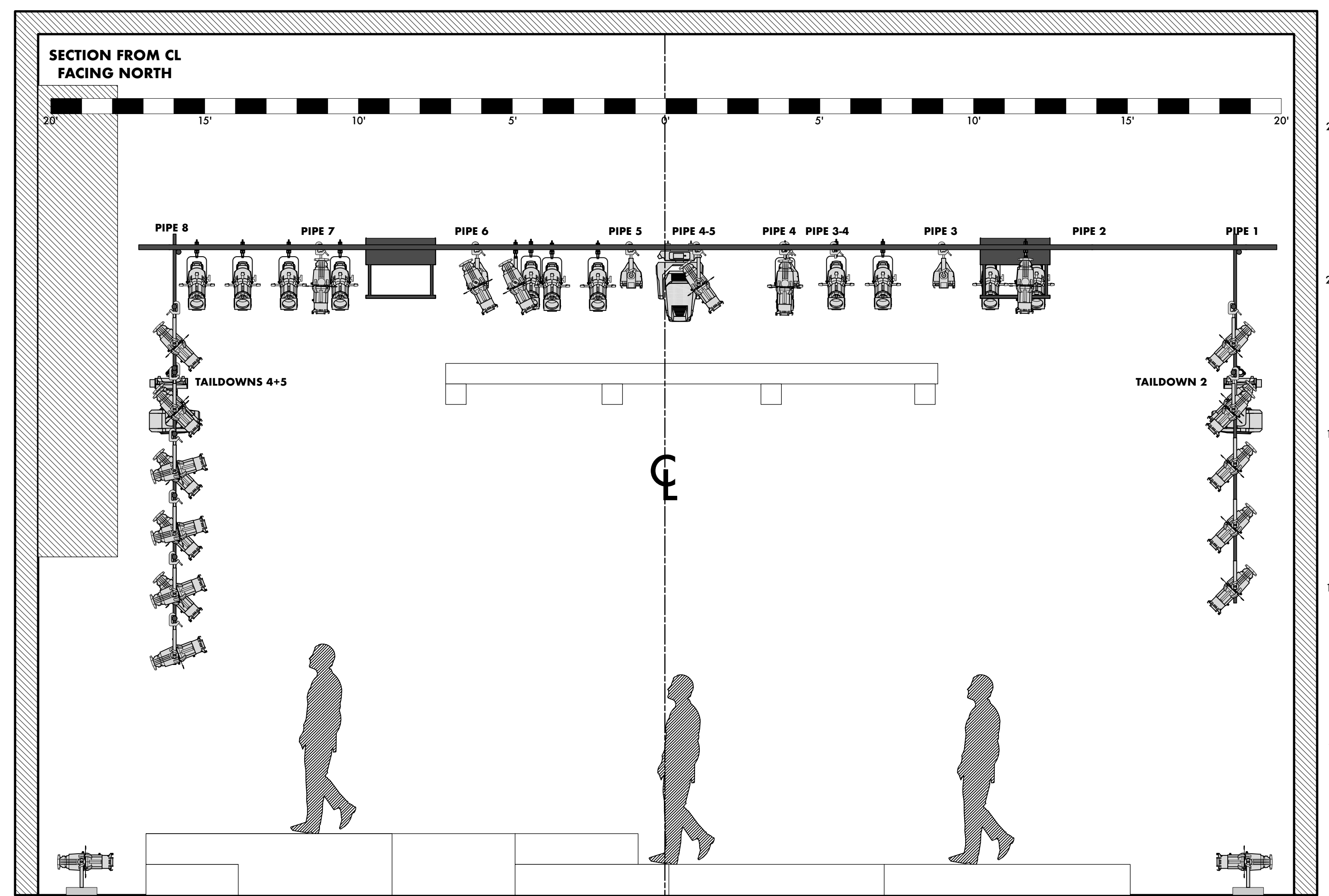
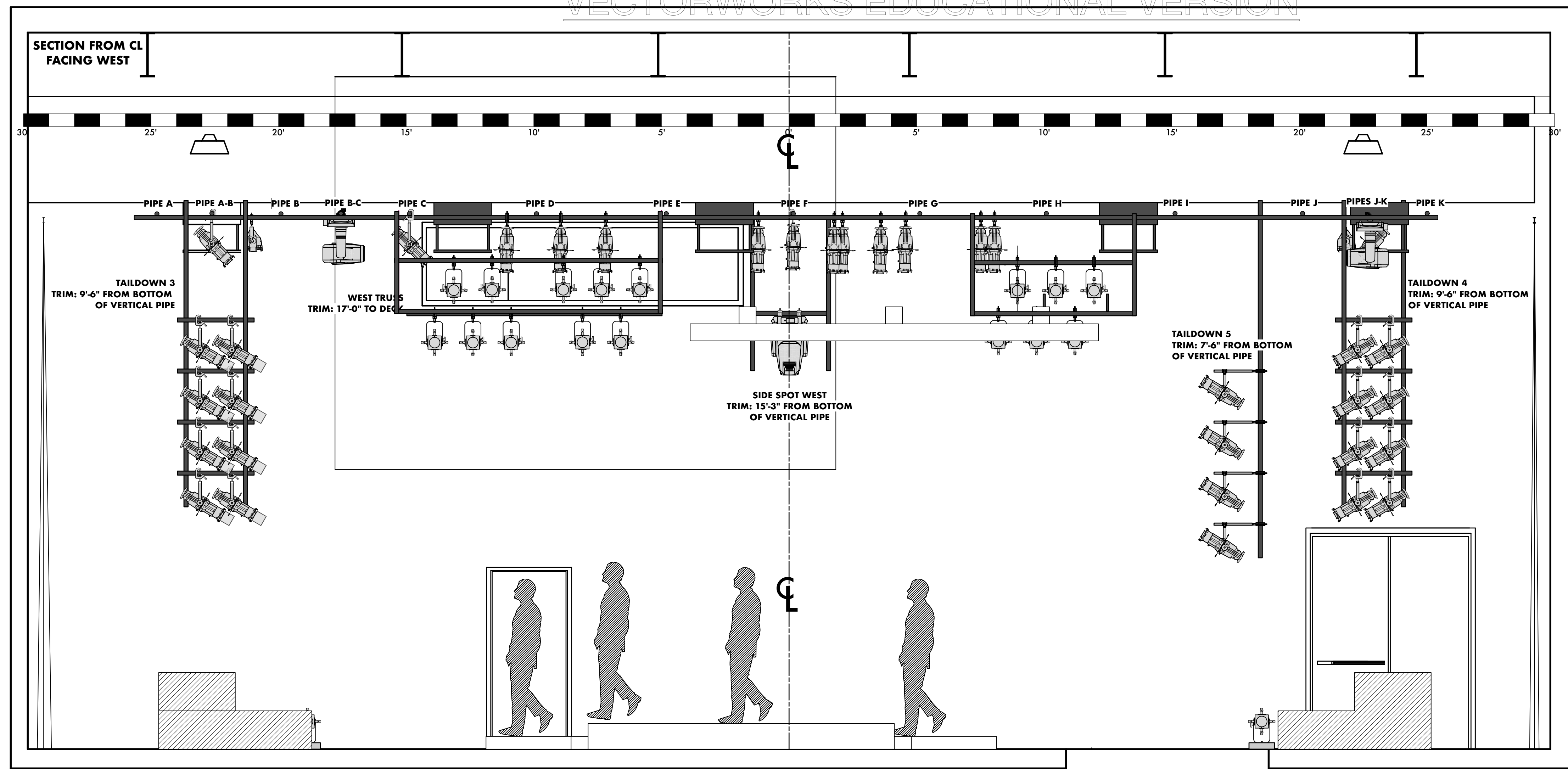
REVISION	DATE	DESCRIPTION
A	08/23/2023	ROUGH
B	08/25/2023	ROUGH FOR AUDIO
C	08/28/2023	FINAL
D	08/31/2023	TRUSS UPDATES
E	09/29/2023	AS BUILT

**DETAIL PLATE**

DRAWN BY: Dominick Riches  
 DATE: 9/29/2023  
 Scale: 1/2" = 1'-0"

**2 OF 3**

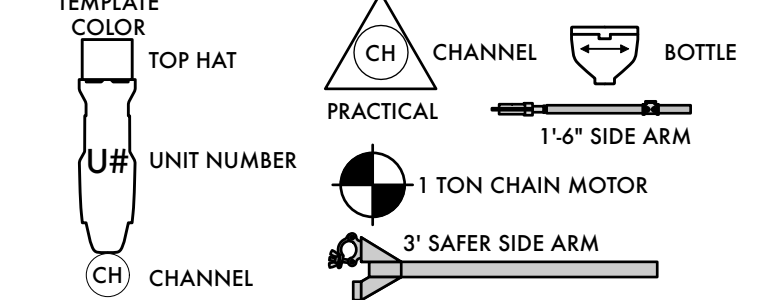




**KEY**

- ETC S4 19DEG @575W
- ETC S4 26DEG @575W
- ETC S4 36DEG @575W
- ETC S4 50DEG @575W
- ETC S4 JR 25-50DEG @575W
- ETC S4 LED II 36DEG @117W DIRECT STROBE MODE
- ETC S4 LED II 50DEG @117W DIRECT STROBE MODE
- ETC S4 PAR MCM XWFL @575W
- HES SOLAWASH 1000 @967W STANDARD 917W MODE
- HES SOLAFRAME 1000 @967W STANDARD 917W MODE
- MDG ATME @715W

**LABEL LEGEND**



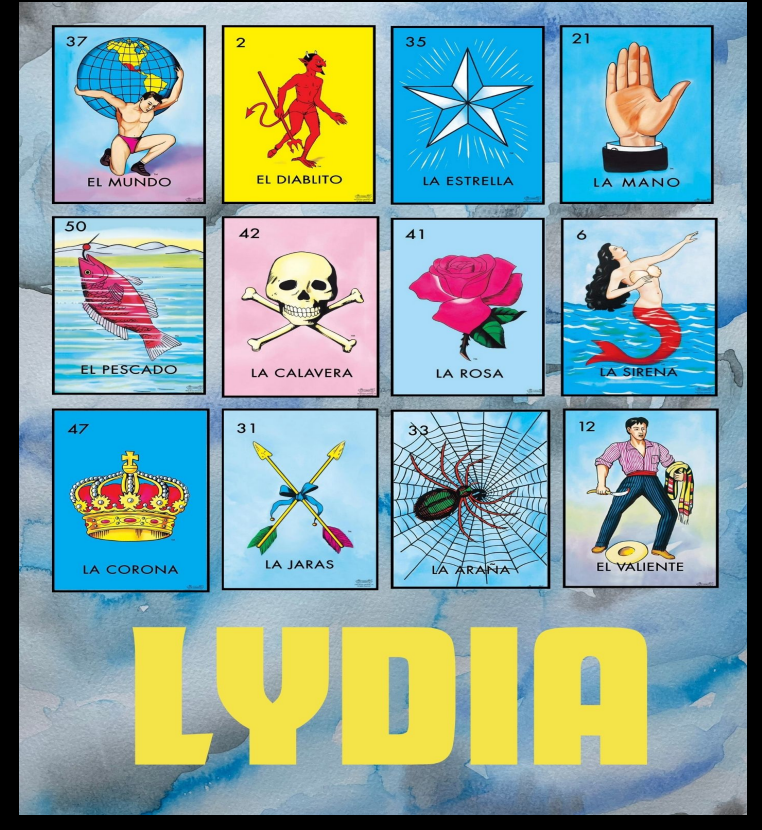
**NOTES**

- ALL UNITS ARE PLACED 1'-6" UNLESS NOTED OTHERWISE.
- ALL TAILDOWNS MUST BE SUPPORTED WITH RIGID CHESBOROUGH'S AND SUPPORT PIPES
- ALL UNITS ON TAILDOWNS MUST BE EQUIPPED WITH TOP HATS OR COLOR EXTENDERS. SEE DETAIL PLATE.
- PLEASE PROVIDE ELECTRICAL TAPE, GAFF TAPE, AND SPIKE TAPE
- LCD SCREENS FACE AWAY FROM THE AUDIENCE
- PLEASE PROVIDE SPARE R119, R132, L269
- PLEASE DROP ALL COLOR, FROST, AND TEMPLATES PRIOR TO FOCUS
- BE SAFE, ASK QUESTIONS !

**LIGHTING DESIGNER**

**DOMINICK ZAYNE RICHES**  
 (818) 877-0337  
 riches.d@artist.uncsa.edu

THIS DRAWING REPRESENTS VISUAL AND CONSTRUCTION SUGGESTIONS ONLY. IT DOES NOT REPLACE THE KNOWLEDGE AND ADVICE OF A LICENSED STRUCTURAL ENGINEER. THE DESIGNER IS UNQUALIFIED TO DETERMINE THE STRUCTURAL OR ELECTRICAL APPROPRIATENESS OF THIS DESIGN, AND WILL NOT ASSUME RESPONSIBILITY FOR IMPROPER ENGINEERING, CONSTRUCTION, HANDLING, OR USE. ALL MATERIALS AND CONSTRUCTION MUST COMPLY WITH THE MOST STRINGENT FEDERAL AND LOCAL FIRE, SAFETY, ENERGY, AND ENVIRONMENTAL CODES.



DIRECTOR	Quin Gordon
PRODUCTION MANAGER	Carson Rainey
SCENIC DESIGNER	Bridgette Tran
ASSISTANT LD	Jade Caric
PRODUCTION ELECTRICIAN	Ashley Spear
MASTER ELECTRICIAN	Noah Welby
PROGRAMMER	Garrett Deutsch
TECHNICAL DIRECTOR	Chase Deitrich

**REVISIONS**

REVISION	DATE	DESCRIPTION
A	08/23/2023	ROUGH
B	08/25/2023	ROUGH FOR AUDIO
C	08/28/2023	FINAL
D	08/31/2023	TRUSS UPDATES
E	09/29/2023	AS BUILT

**SECTION**

DRAWN BY: Dominick Riches  
 DATE: 9/29/2023  
 Scale: 1/2" = 1'-0"